

Biking in Brownsville/East New York

Community Responses



Commissioner Janette Sadik-Khan New York City Department of Transportation
Presented February 16, 2012 at Thomas Jefferson High School

Presentation Outline

- Project Background
- Biking in Brownsville/East New York
 - Existing Conditions
 - Criteria for Bicycle Lanes
 - Community Proposals
 - DOT Recommendations
 - Bike Parking
 - Timeline for Implementation
- Next Steps

Project Background



June 2011

Public Workshop at Brownsville Recreation Center

- Presented Typical Designs
- Community Feedback

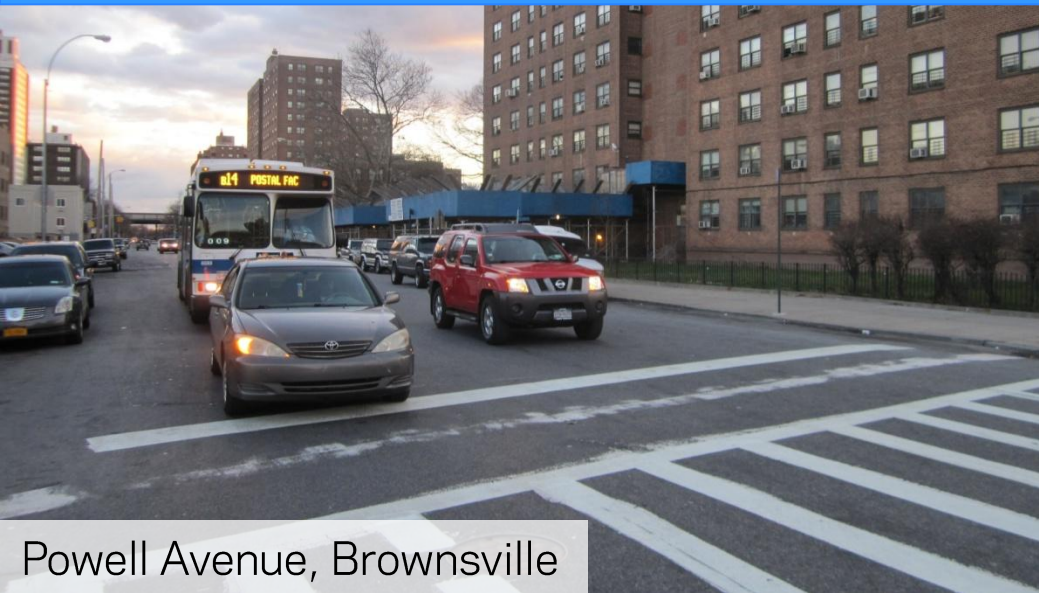


October 2011

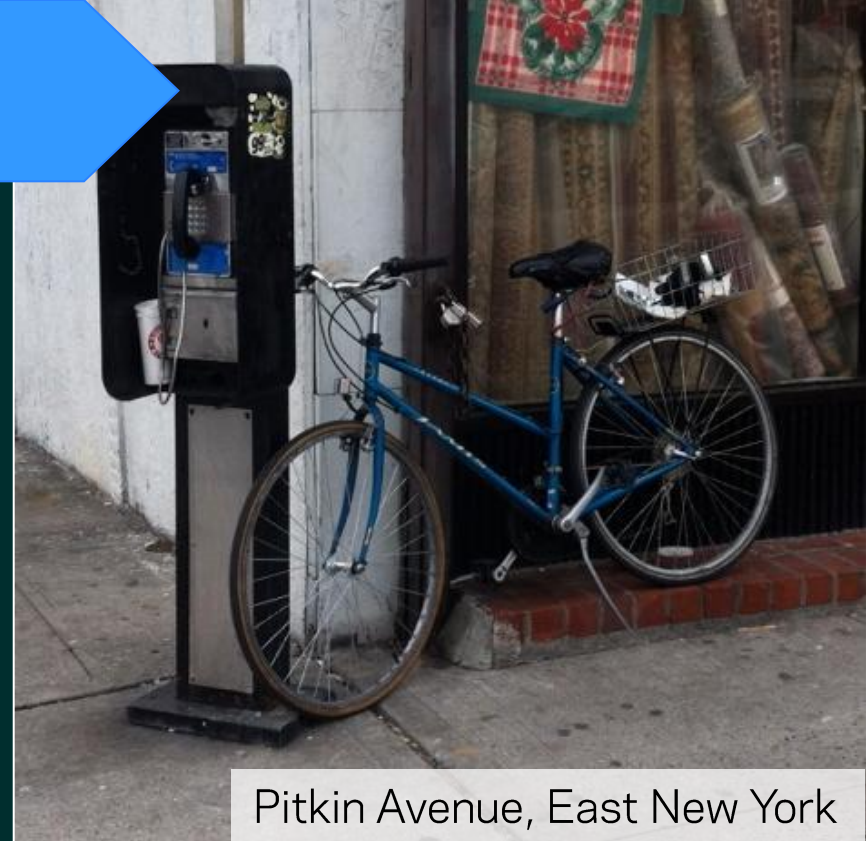
Bicycle Neighborhood Tour Brownsville and East New York

- Toured Neighborhoods by Bike
- Greenmarket Stops
- Community Feedback

Why is it Tough to Ride?



Powell Avenue, Brownsville



Pitkin Avenue, East New York



Saratoga Avenue, Brownsville



Pitkin Avenue, East New York

Why is it Tough to Ride?



**Wide streets,
no markings**

Powell Avenue, Brownsville



No bike racks

Pitkin Avenue, East New York



Potholes

Saratoga Avenue, Brownsville



Double parking

Pitkin Avenue, East New York

What Can Be Done? DOT Toolkit



BEFORE

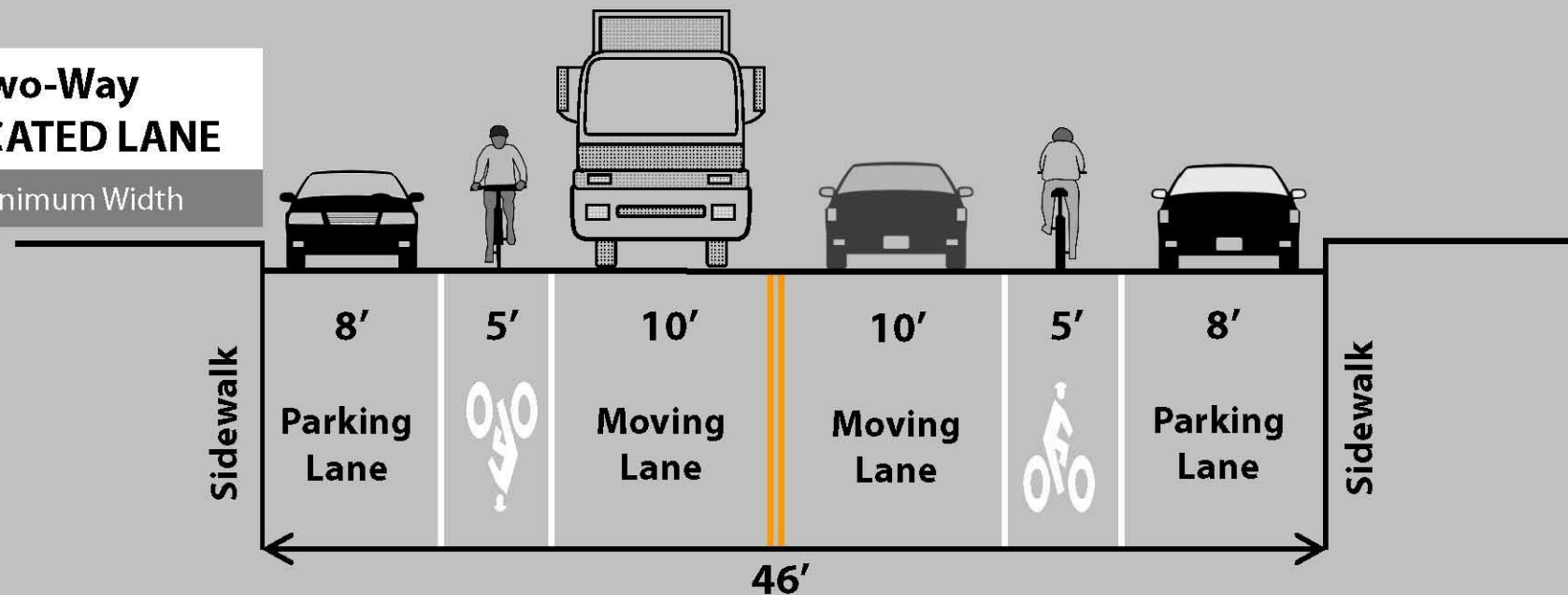
Clarendon Road, Brooklyn

What Can Be Done? DOT Toolkit

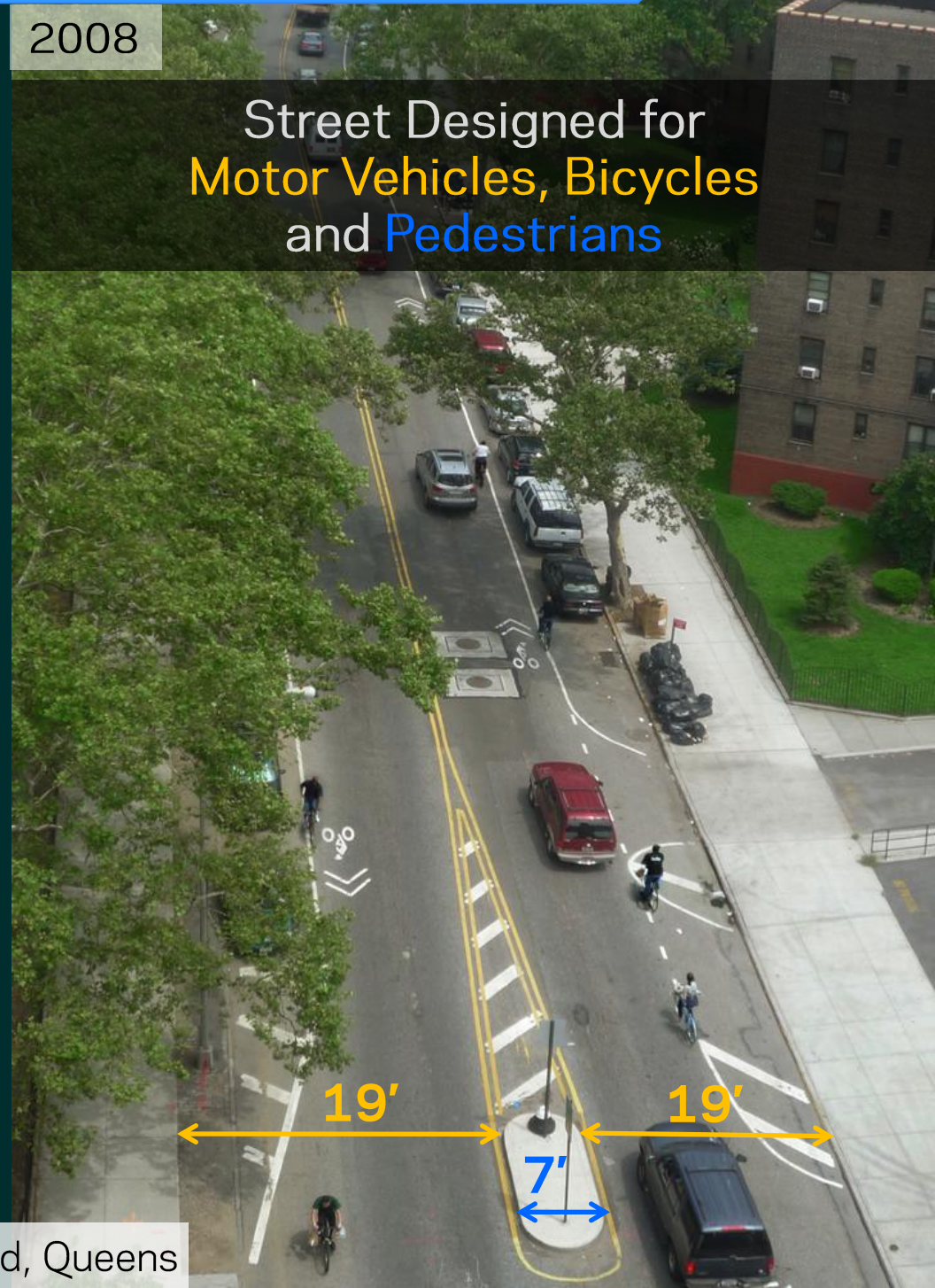


Two-Way DEDICATED LANE

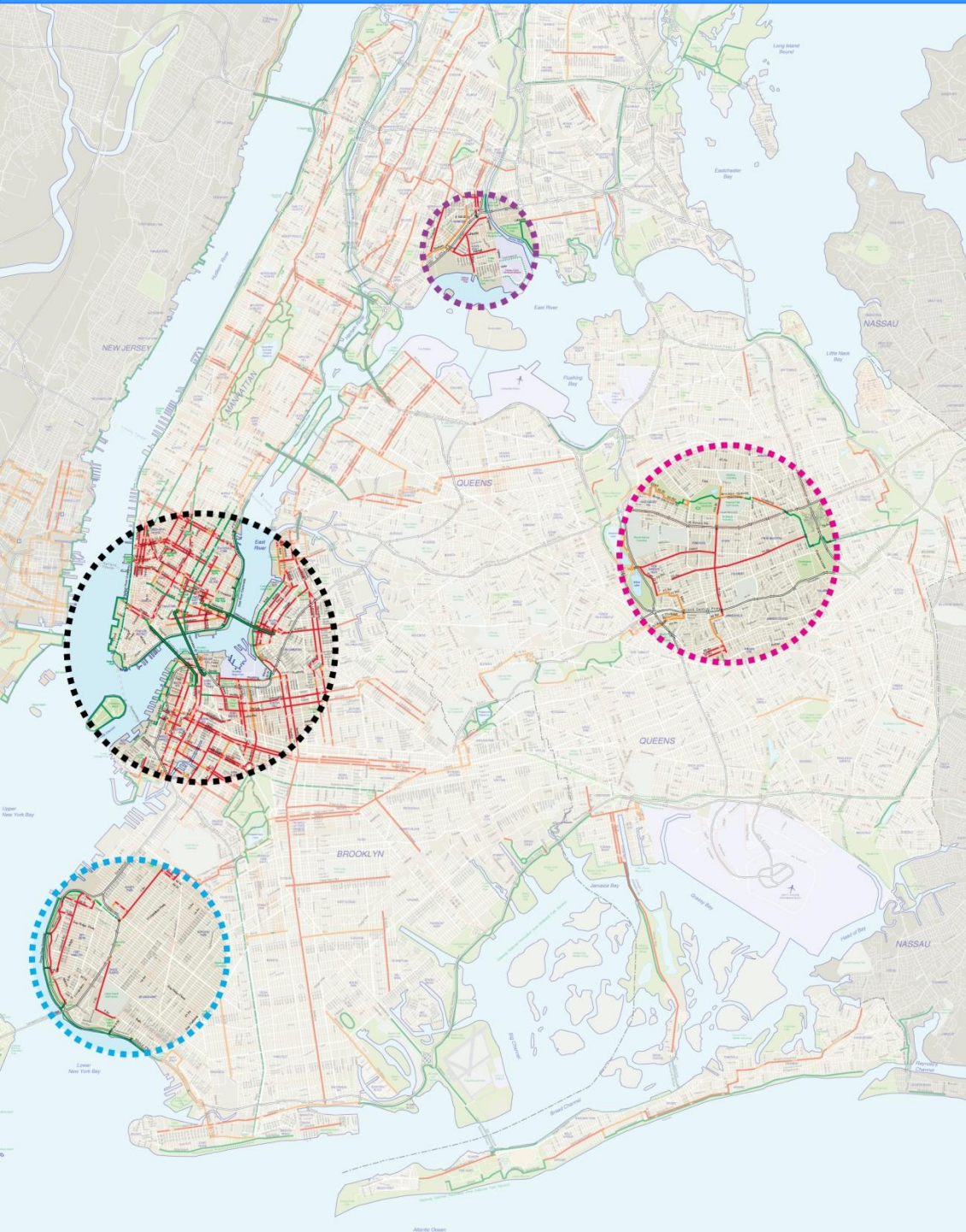
46' Minimum Width



Complete Streets Design Philosophy



Siting Criteria: Bicycle Network



Serve High Density & Demand Areas

Accessibility/Direct Route to Major Destinations

Connection to Existing Bicycle Network

Create Neighborhood Networks

Community Support

Siting Criteria: Promoting Ridership



Vanderbilt Avenue, Brooklyn

Minimize Conflict with Other Modes
Feasibility of Implementation
Attractiveness of Route



Street Design: Types of Streets

Narrower travel lanes
Light to medium vehicle traffic
Residential and/or light commercial
One-way or Two-way



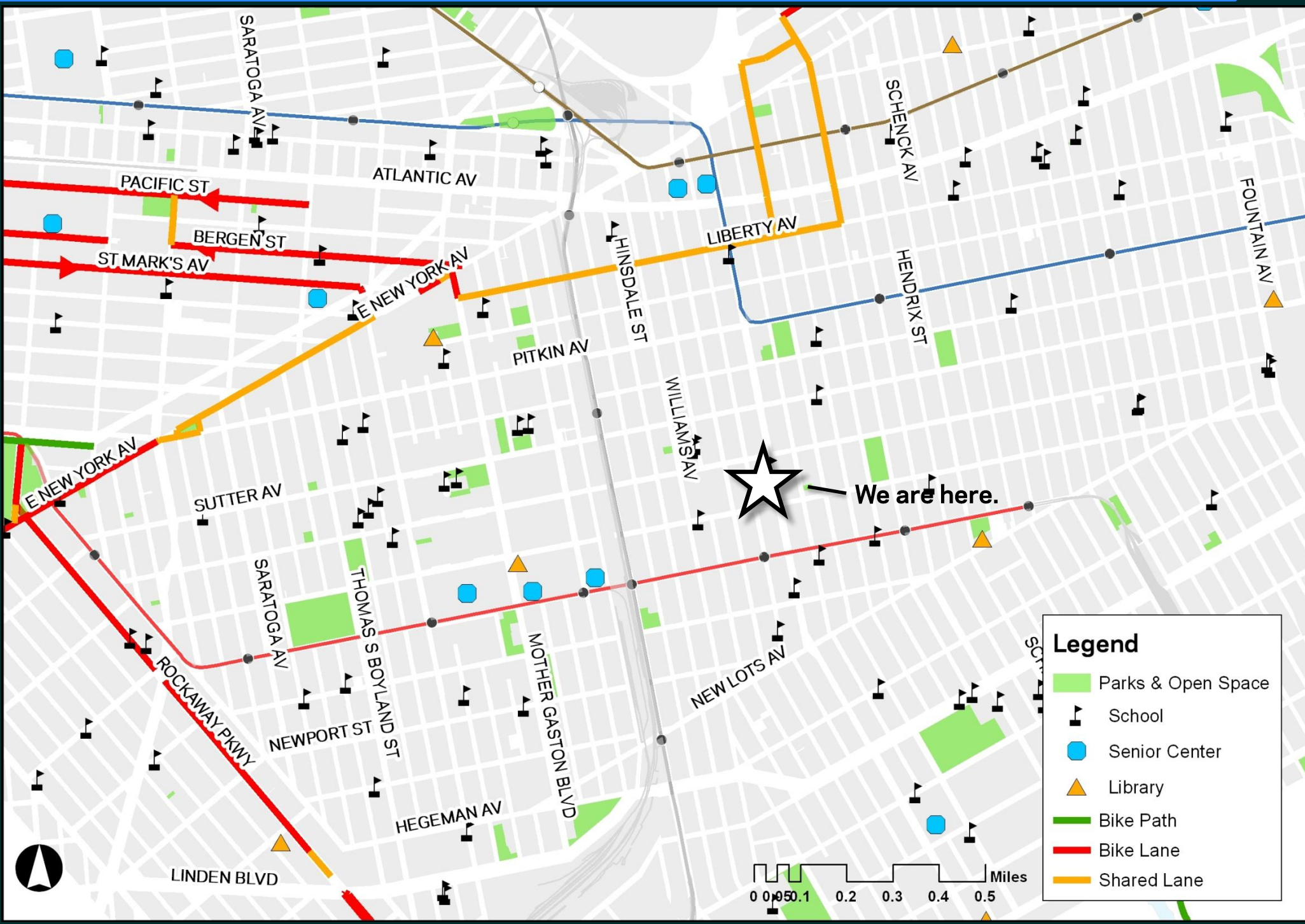
Liberty Avenue, Brooklyn

Street Design: Types of Streets

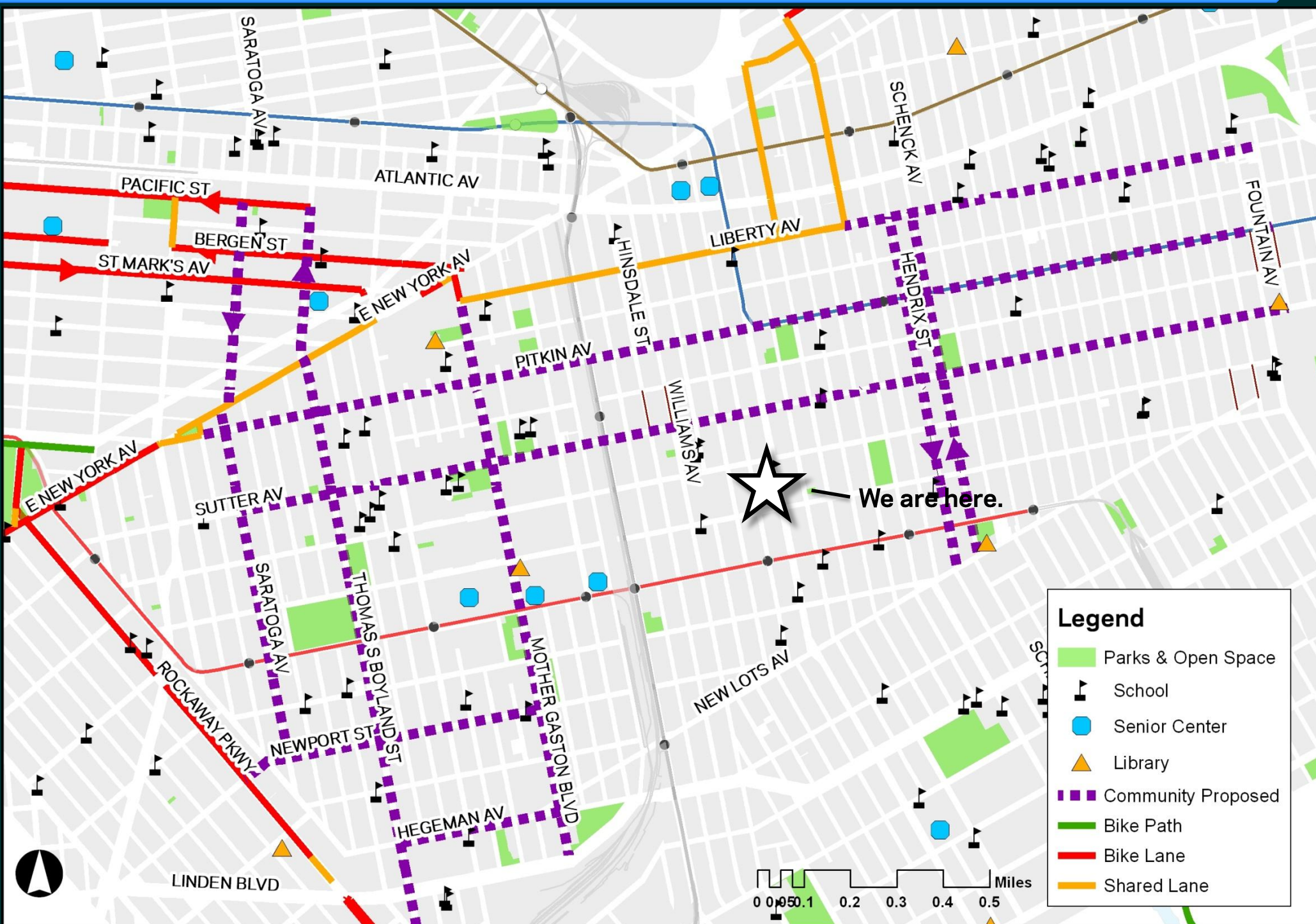
Wider travel lanes
Medium to heavy vehicle traffic
Residential, commercial, and/or industrial
One-way or Two-way



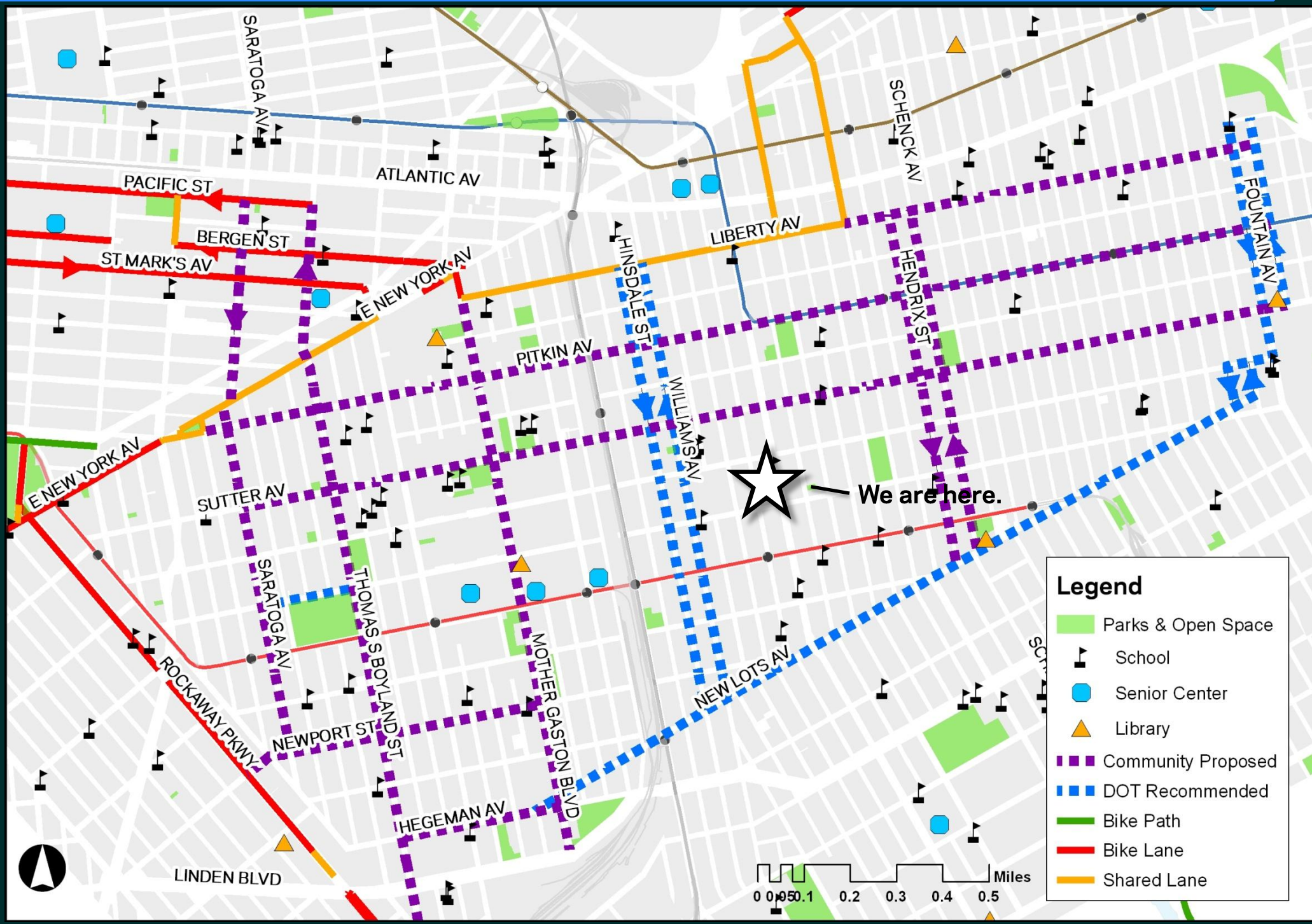
Existing Bike Facilities



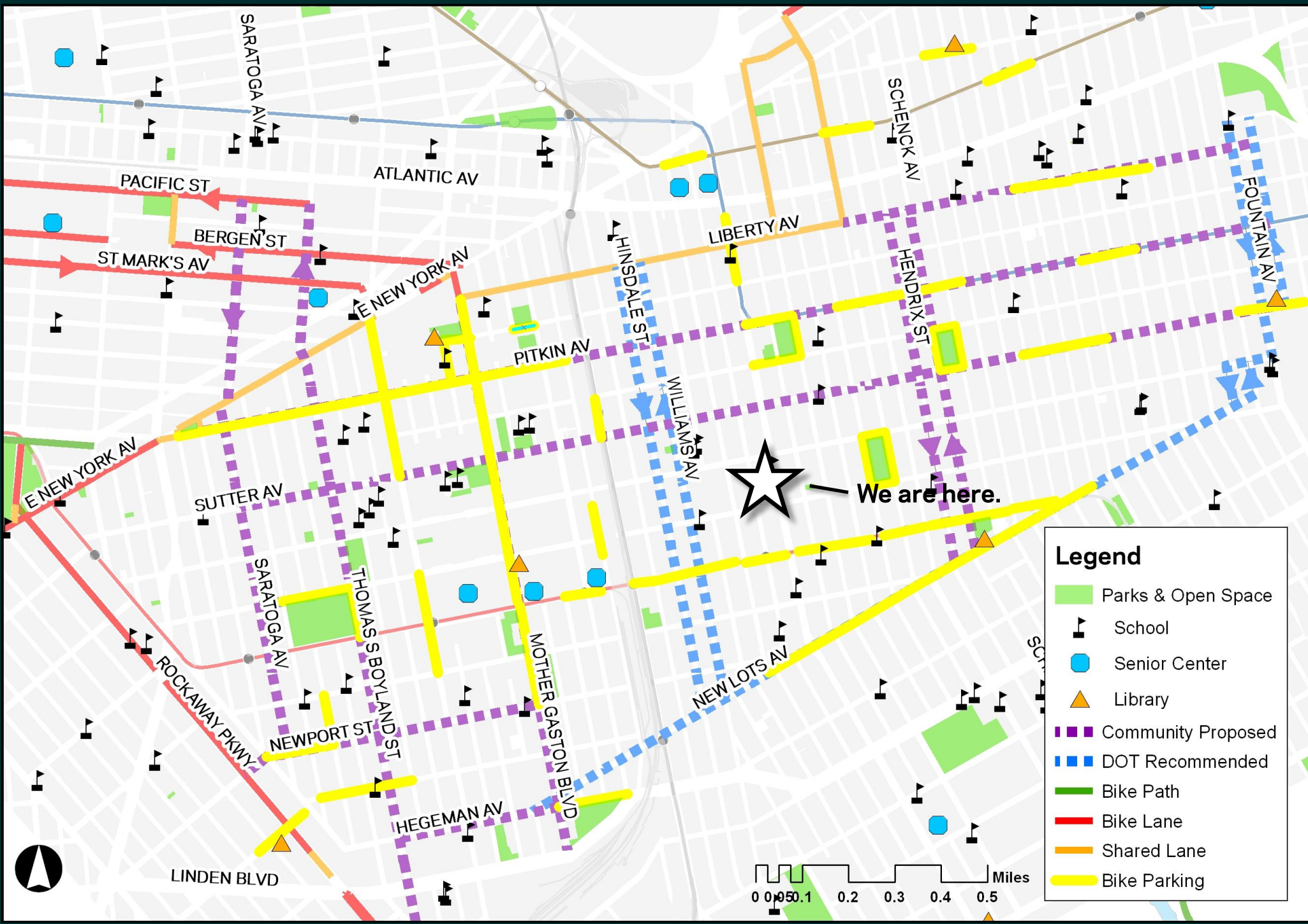
Bike Facilities from Community Proposals



Bike Facilities from DOT Recommendations



Bike Parking



Proposed Project Timeline

2012

- Community selects a priority list of projects
- Establish a 3 year plan for implementation

2013

- Implement Phase I
- Community evaluation and input

2014

- Implement Phase II
- Community evaluation and input

2015

- Implement Phase III
- Community evaluation and input

Next Steps

- Your feedback is important!
- Shared community vision
- Support for specific goals
- DOT Implementation

Contact Us

- Fill out an online form at: www.nyc.gov/dot
- Mail your comments to:

Office of the Brooklyn Borough Commissioner
NYC Department of Transportation
16 Court Street
Brooklyn, NY 11241

Questions?

**Thank
You**