

JAMAICA URBAN DESIGN AND STREETScape IMPLEMENTATION PLAN

PUBLIC WORKSHOP
JUNE 21, 2016



ARUP

AGENDA

Project Introduction

- Study area
- Project objectives
- Public Outreach

Jamaica Today: Existing Streetscape Conditions

- Urban design & mobility
- Uses & character
- Streetscape amenities

Small Group Discussions

PROJECT INTRODUCTION

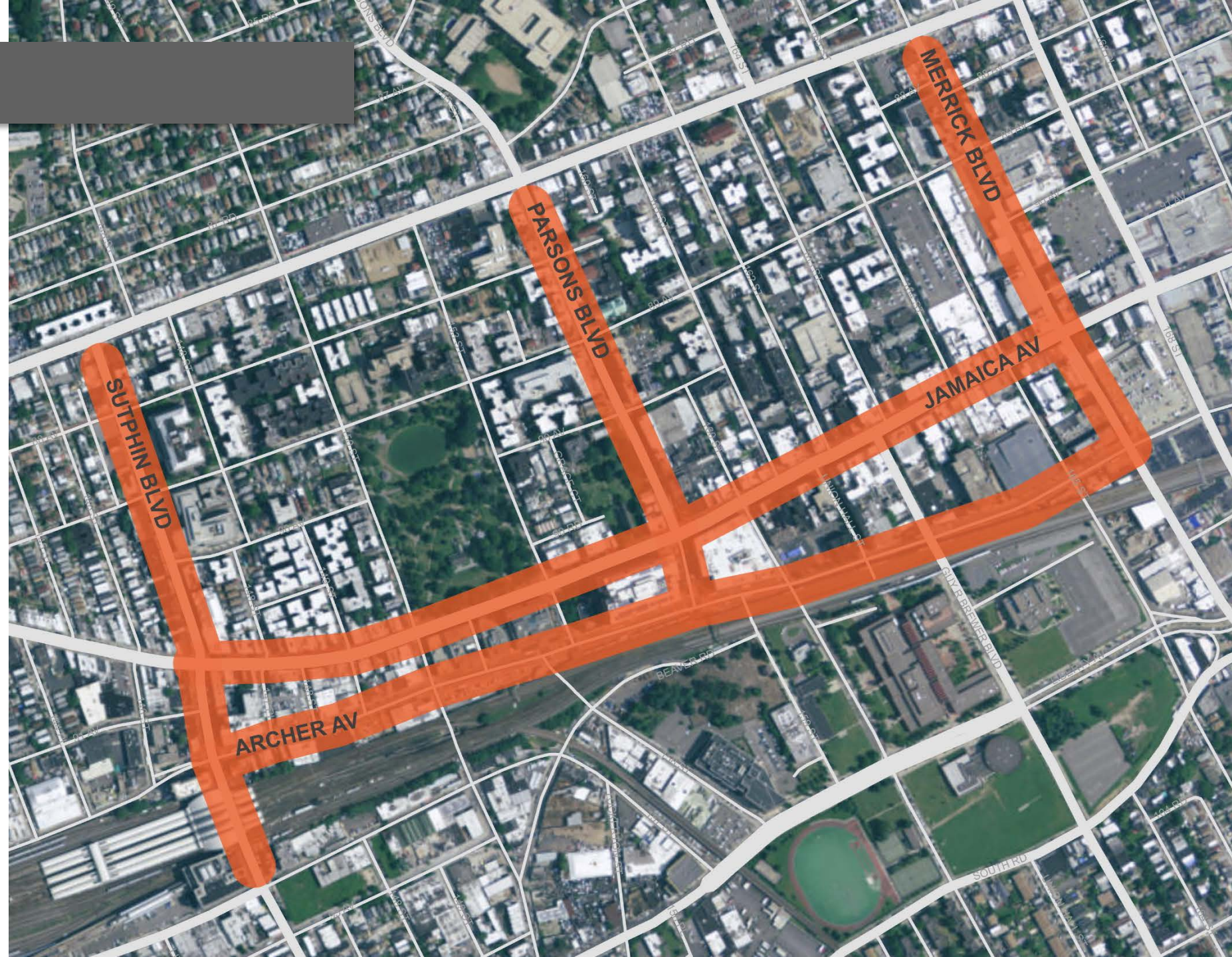
ABOUT THE PROJECT

- Identified in Jamaica NOW Action Plan as a key first step towards implementation
- Create streetscape design concepts for up to three focus areas
- Led by NYCDOT with consultant support from Arup
- Coordinated with DOT Traffic Study



STUDY AREA

- Jamaica Ave
- Archer Ave
- Sutphin Blvd
- Parsons Blvd
- Merrick Blvd

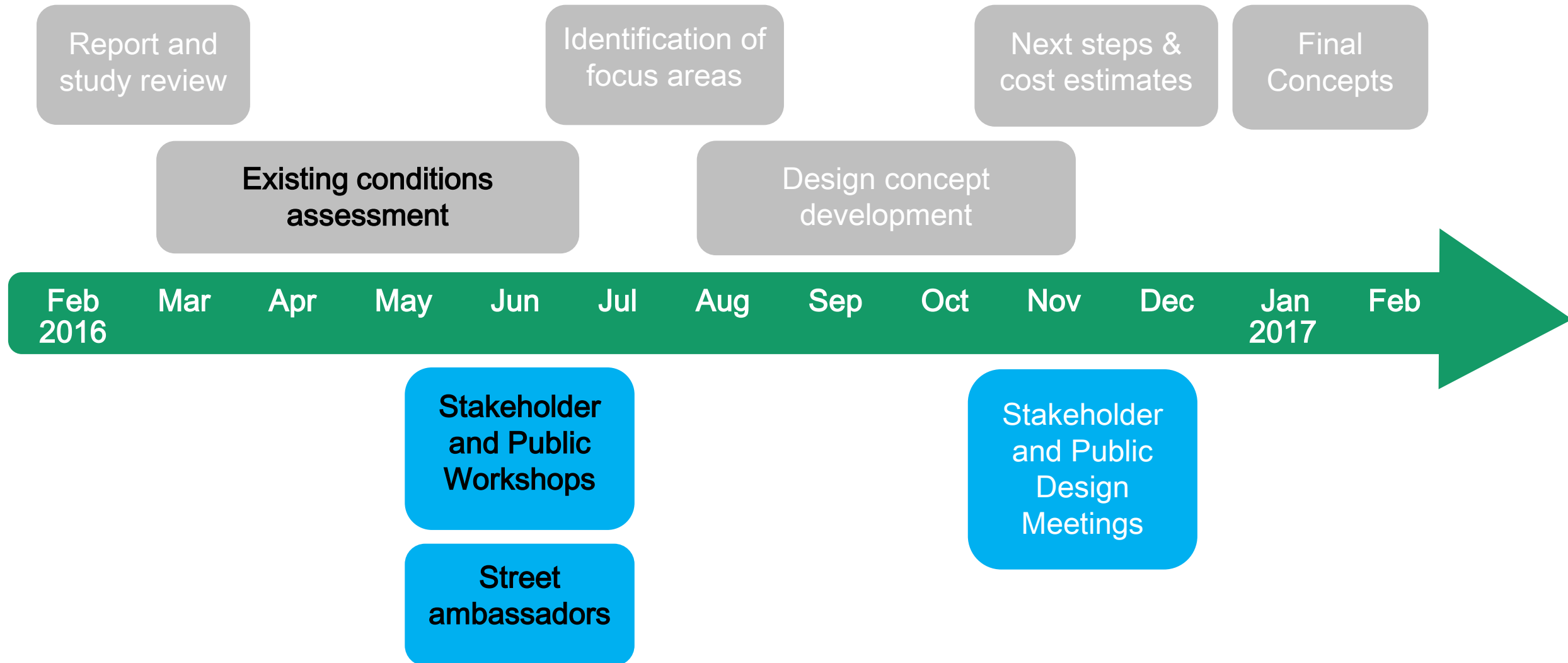


PROJECT OBJECTIVES

- Better understand conditions related to streetscape implementation
- Determine high-priority areas to focus investment
- Create design concepts in focus areas
- Use concepts to advance implementation and obtain funding
- Engage public on streetscape and mobility issues



PROJECT SCOPE AND TIMELINE



PUBLIC OUTREACH

- Stakeholders & JLC Meetings (Last week)
- DOT Street Ambassador Outreach

June 13th F Train Station
10 AM - 5 PM Parsons Blvd & Hillside Ave

June 14th Rufus King Park
2 PM - 5 PM Jamaica Ave & 150 St

June 15th E/J/Z Stations & Bus Stops
10 AM - 5 PM Archer Ave & Parsons Blvd
Archer Ave & 153rd St

June 16th F Train Station
2 PM - 5 PM Sutphin & Hillside Avenue

June 17th Sidewalk Sales Day
10 AM - 5 PM Jamaica Ave & 160th St

June 18th YMCA Block Party
10 AM - 3 PM Parsons Blvd & 90th Ave
10am-3pm

- Public Meeting (Tonight)
- Visit our feedback portal:
 - <http://nycdotfeedbackportals.nyc/DowntownJamaica>
- Stakeholder and Public Design Meetings (Fall)



JAMAICA TODAY

EXISTING CONDITIONS

EXISTING CONDITIONS SUMMARY

Urban design & mobility

- Transit & vehicular mobility
- Pedestrian mobility
- Crosswalk conditions
- Street grid

Streetscape Amenities

- Seating
- Street Trees
- Street Lighting

Uses and Character

- Land and building uses
- Architecture and historic resources
- Signs
- Open space

Future Development

- Types of new uses and users

URBAN DESIGN & MOBILITY

TRANSIT & VEHICULAR MOBILITY

- Regional train/bus transfer hub
- Over 50 bus lines
- Over 60 bus stops
- Bus only lanes
- Heavy vehicle use
- On and off-street parking

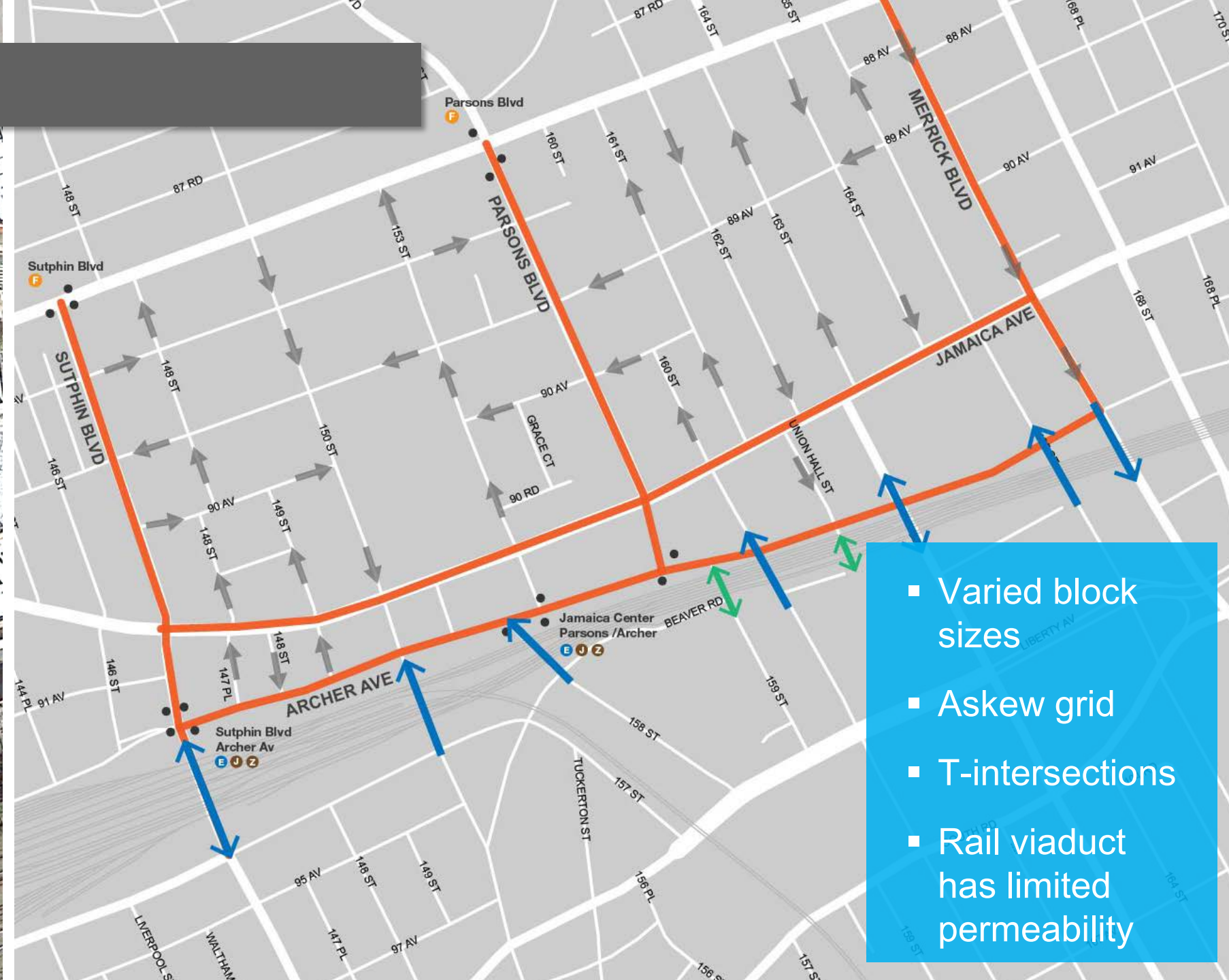


PEDESTRIAN MOBILITY

- Very high levels of pedestrian activity on all five corridors
- Generally good flow, but congestion in some areas
- Conflicts with waiting bus riders
- Crosswalk conditions need improvement



STREET GRID



- Varied block sizes
- Askew grid
- T-intersections
- Rail viaduct has limited permeability

USE AND CHARACTER

OVERALL CHARACTER

- Bustling, vibrant area with diverse mix of locals, employees, and visitors
- Rich street life during daytime
- Contrast between retail and civic uses



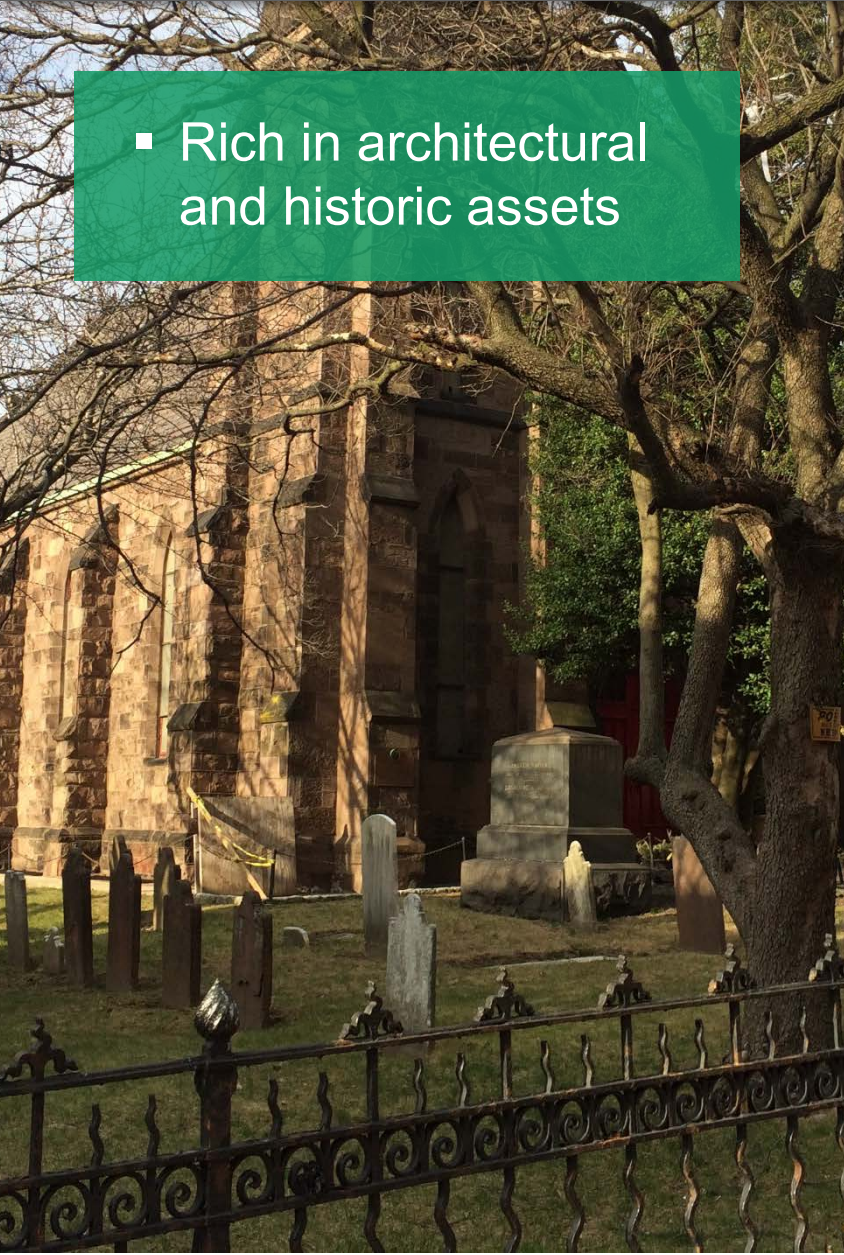
OPEN SPACE

- King Park is primary open space asset
- Other green spaces fenced from public use
- Few small, pocket parks and public plazas
- Two new plazas nearing construction

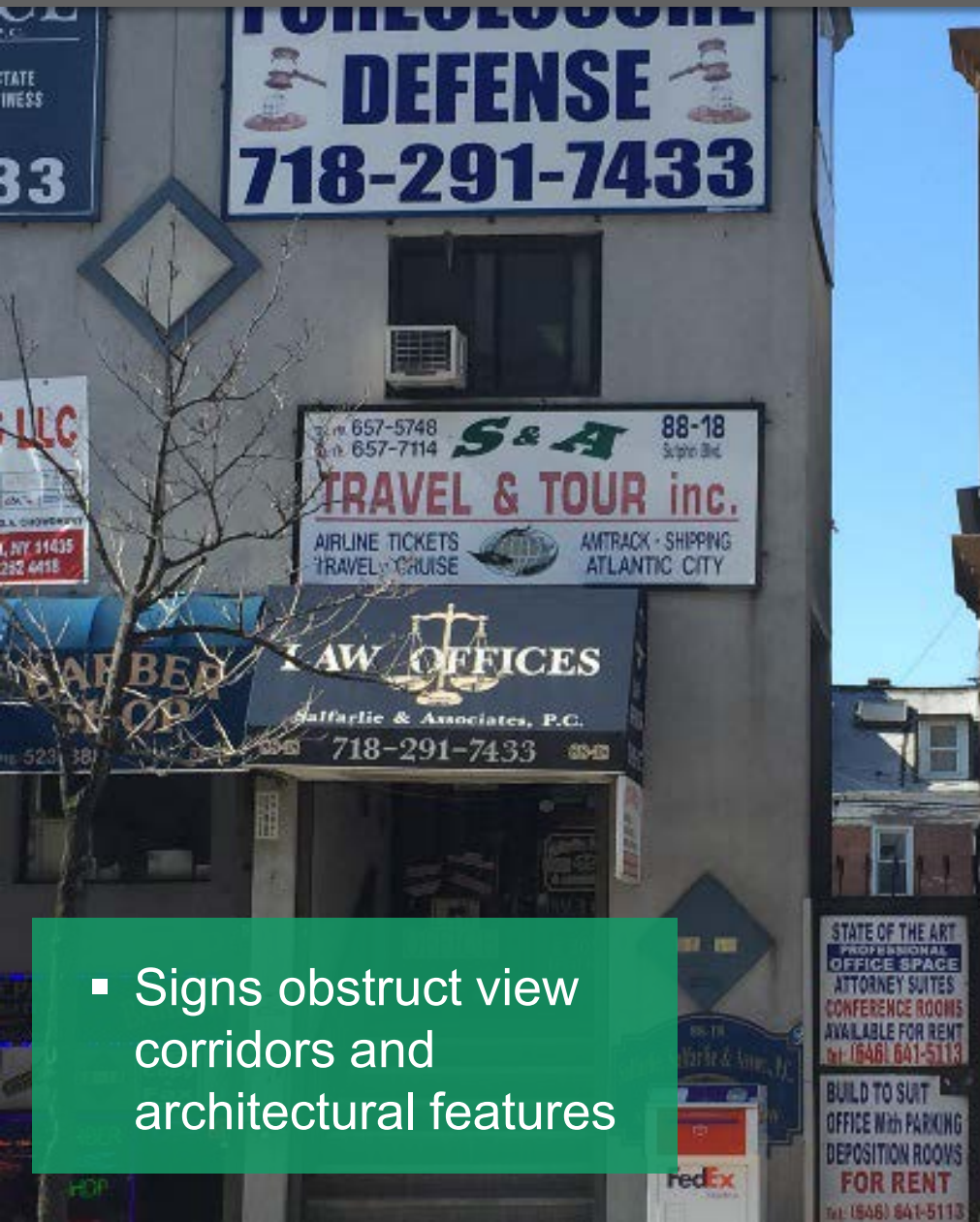


ARCHITECTURE & HISTORIC ASSETS

- Rich in architectural and historic assets



SIGNS



STREETSCAPE AMENITIES

STREET TREES

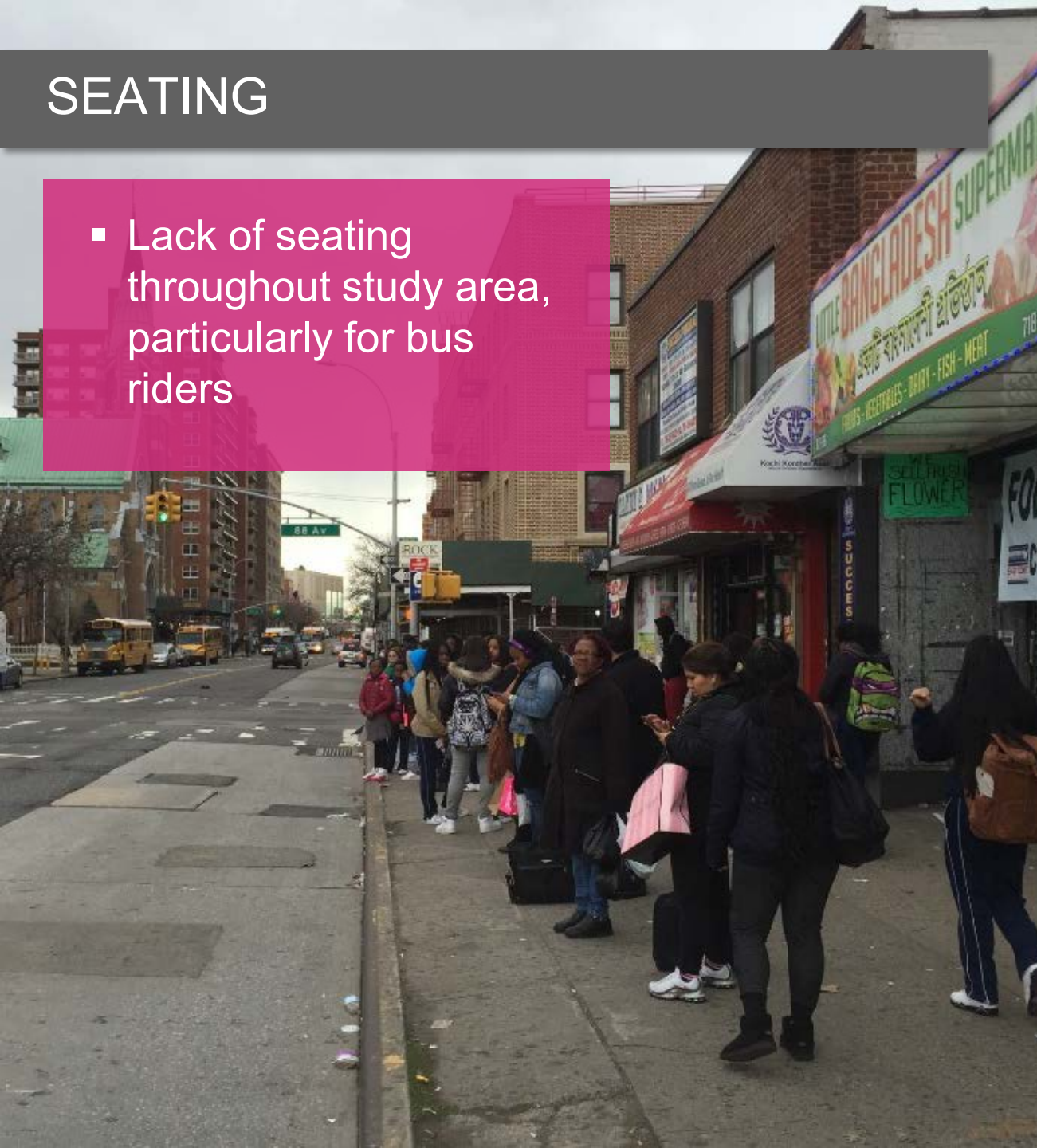


- Mixed tree coverage
- Generally poor canopies due to type or pruning
- Mixed tree health
- Small tree pits
- Inconsistent tree types



SEATING

- Lack of seating throughout study area, particularly for bus riders



LIGHTING



- Unique TBTA street lights on Jamaica Ave
- Mix of Davit LED pole types



EXISTING STREET LIGHTS

Legend:

- Cultural Institutions
- Civic Institutions
- Educational Institutions
- Religious Institutions
- Residential
- Mixed Use / Commercial
- Institutions
- Industrial
- Study Area

Legend:

- Davit Pole + LED Cobra
- Davit Pole + HPS Cobra
- Davit Pole + 2x LED Cobra 90°
- Davit Pole + 2x LED Cobra 180°
- Davit Pole + LED Cobra + Flood
- Davit Pole + 2x LED Cobra + Flood
- TBTA Pole + MH Stad
- Flushing Meadow Park Pole
- Wood Pole + HPS Cobra
- Utility Pole + Flood
- Utility Pole + 2-3x Flood
- Underdeck
- LED Underdeck
- Wallpack
- * Light Reading [Foot-Candle]

Foot candles generally meet DOT standards

-
- EXISTING STREET LIGHTS**
- Legend:**
- Cultural Institutions
 - Civic Institutions
 - Educational Institutions
 - Religious Institutions
 - Residential
 - Mixed Use / Commercial
 - Institutions
 - Industrial
 - Study Area
- Legend:**
- Davit Pole + LED Cobra
 - Davit Pole + HPS Cobra
 - Davit Pole + 2x LED Cobra 90°
 - Davit Pole + 2x LED Cobra 180°
 - Davit Pole + LED Cobra + Flood
 - Davit Pole + 2x LED Cobra + Flood
 - TBTA Pole + MH Stad
 - Flushing Meadow Park Pole
 - Wood Pole + HPS Cobra
 - Utility Pole + Flood
 - Utility Pole + 2-3x Flood
 - Underdeck
 - LED Underdeck
 - Wallpack
 - * Light Reading [Foot-Candle]
- Foot candles generally meet DOT standards**

- Foot candles generally meet DOT standards

FUTURE DEVELOPMENT

FUTURE DEVELOPMENT



- New residential, hotel, retail, institutional developments
- Rezoning allows for more mixed use and intensity
- Streetscape must accommodate more users

SMALL GROUP DISCUSSIONS

SMALL GROUP DISCUSSIONS

- Choose one of the study area corridors:
 - Archer Avenue
 - Jamaica Avenue
 - Sutphin Blvd
 - Parsons Blvd
 - Merrick Blvd
- Discuss your ideas – 30 mins
- Report back



THANK YOU

