



BROOKVILLE BOULEVARD FLOOD MITIGATION STUDY

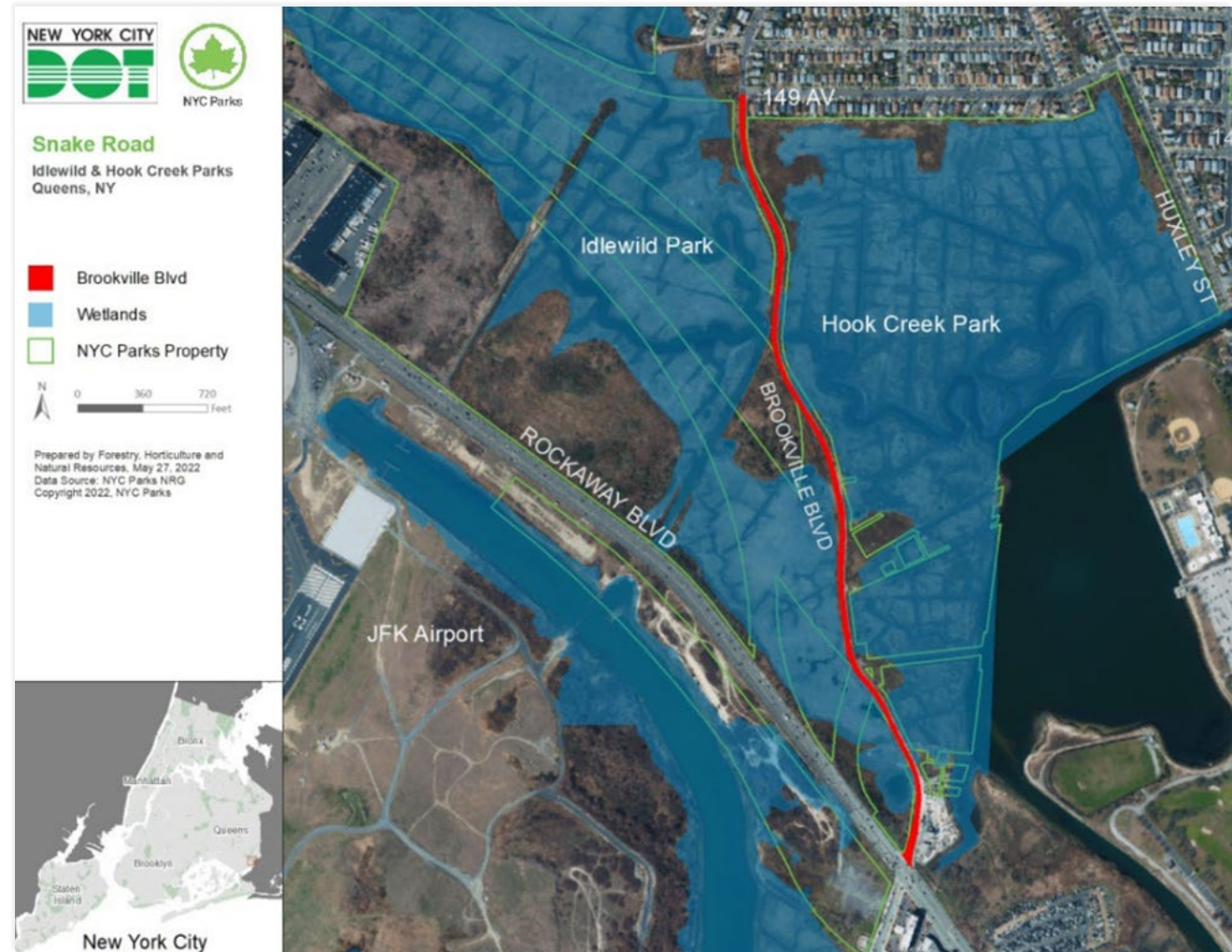
Public Information Meeting

Presented to Brookville Boulevard Community on December 10, 2025



Agenda

- Introductions
- Project Background & History
- Project Schedule & Scope
- Project Concepts
- Open House



Introductions

Agency Client Team

Lead Agency



Partner Agency



Stakeholder Agencies



FEMA

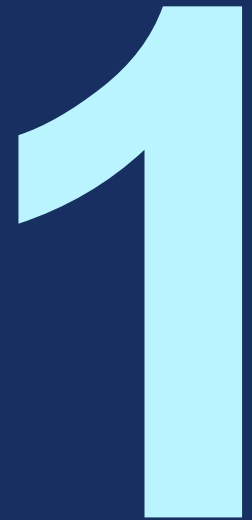


Introductions

Consultant Team



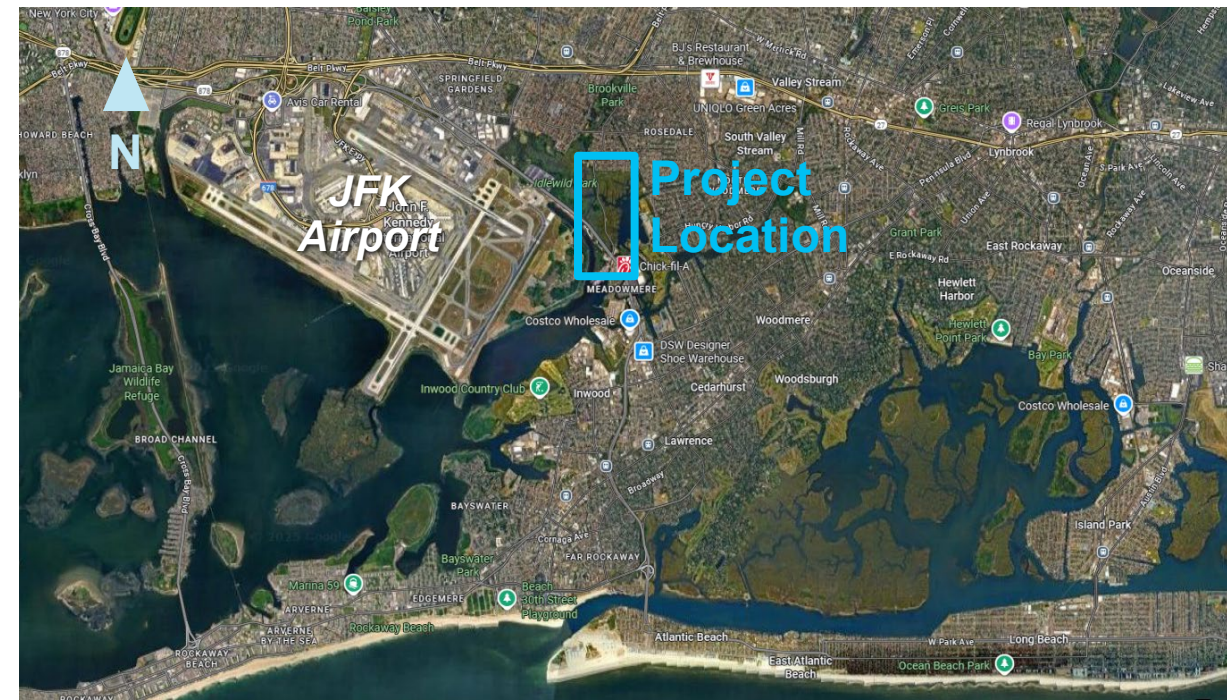
Project Background & History



Project Background & History

Brookville Boulevard – A Key Connection Between SE Queens & SW Nassau

- Originally Constructed in the Late 1800's
- Connects SE Queens (Rosedale) with Nassau County's Five Towns & the Rockaway Peninsula
- No easily accessible alternative routes or detours



Project Location

Project Background & History

Brookville Boulevard – A History of Driver Safety & Illegal Dumping Issues

‘Snake Road’ Buried In Bureaucracy Of Refuse

by Christopher Henderson May 18, 2006



The mounds of fast food containers, old tires, and broken furniture that fill the stretch of wet Brookville Boulevard from 149th Avenue to Rockaway Boulevard, known as Snake Road to locals, fill an average city dump.

The public land has been a mess for at least a decade and faces little prospect of a major cleanup. It remains in bureaucratic limbo between the state and the city. The land is regulated by the state Department of Environmental Conservation, but the responsibility of cleaning it up falls to the city.

Source: qchron.com

Two teens killed in crash on Snake Road

By Ivan Pereira

Posted on May 20, 2009



By Ivan Pereira

Dozens of friends of a Richmond Hill High School student were in mourning after he and another teen were killed Wednesday afternoon in a car crash on the accident-prone part of Brookville Boulevard known as Snake Road.

Source: Qns.com

1 dead, 3 hurt as car plunges into marsh near JFK

December 30, 2012 / 1:08 PM EST / CBS News

NEW YORK One woman is dead and three other people were injured after the car they were riding in plunged into a marshy area near Jamaica Bay in Queens early Sunday morning.

The woman was brought to the hospital in very critical condition, reports CBS Station WCBS. She was later pronounced dead at Jamaica Hospital, police said.

The car was traveling on a narrow, curvy road off of Rockaway Blvd., near a runway at John F. Kennedy International Airport, when it went off the road and into a few feet of water around 4:30 a.m.

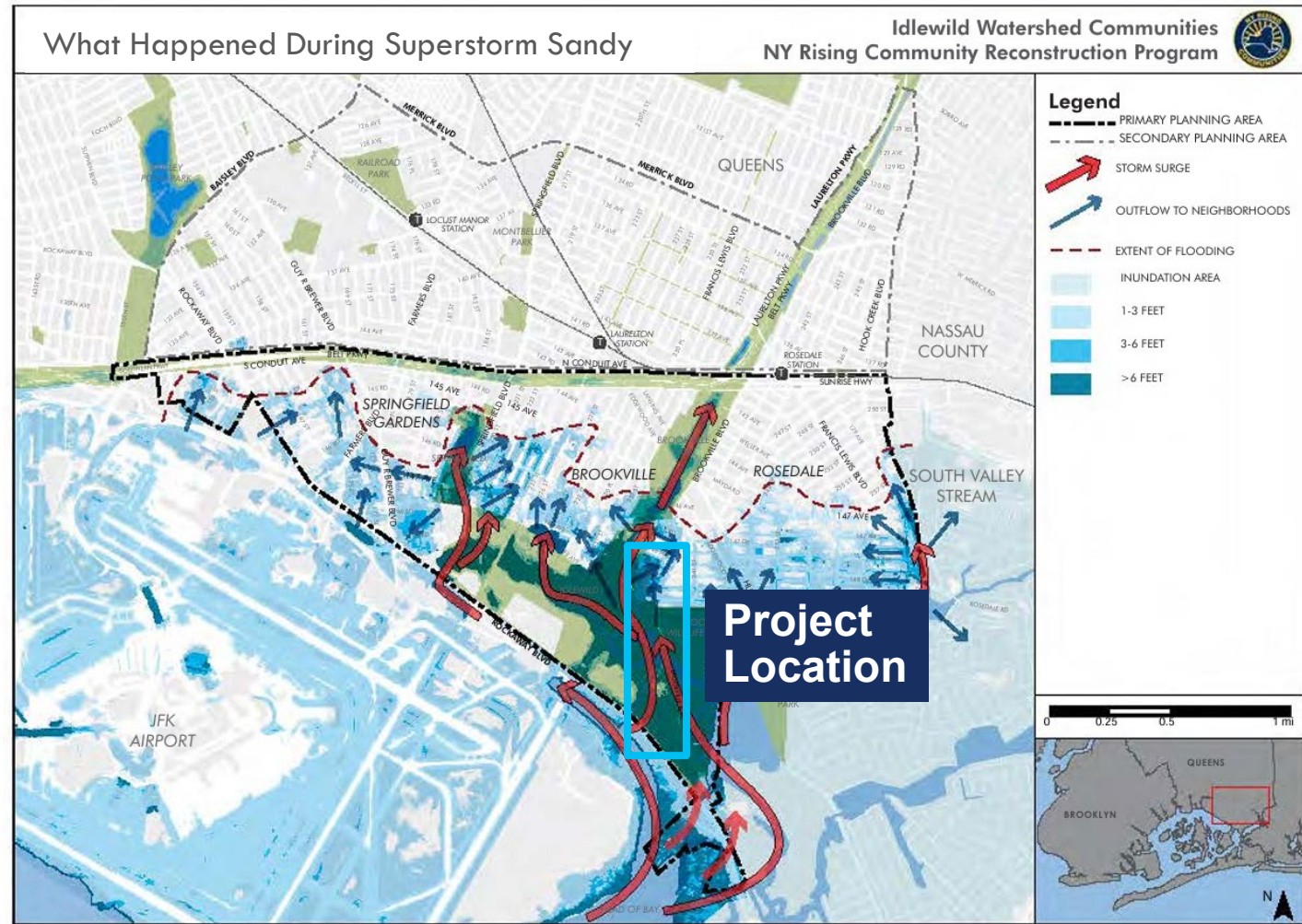
The roadway - Brookville Boulevard - is commonly known as Snake Road for its dangerous curves, reports WCBS correspondent Amy Dardashtian, who also spotted black ice on the roadway near the crash scene.

Source: cbsnews.com

Project Background & History

Brookville Boulevard – Superstorm Sandy

- Storm Surge Flooding inundated Brookville Boulevard and the Surrounding Area
- Roadway is extremely vulnerable to high tides, coastal storms, and storm surge flooding



Source: NY Rising Community Reconstruction Program, Idlewild

Project Background & History

Brookville Boulevard – New York Rising Community Reconstruction Program - Idlewild

- Report Released in December 2014
- Examined Superstorm Sandy and Flood Impacts
- Proposed Multiple Projects including this study dedicated to Brookville Boulevard / Snake Road
- Funding for this study was secured by a FEMA Grant and is focused on Snake Road
 - Proposal Submitted in 2022, Awarded in 2023

Idlewild Watershed Communities

D2: Study to Elevate Brookville Boulevard (Snake Road) between 149th Boulevard and Rockaway Boulevard [Featured Project]

Project Description

Brookville Boulevard between 149th Ave and Rockaway Boulevard—known locally as Snake Road—is a key transportation corridor for the Idlewild Watershed Communities. The roadway services 17,500 cars daily, the Q114 bus route, and provides direct access from Brookville to Rockaway Boulevard, one of the area's main east-west thoroughfares. However, Brookville Boulevard is a dangerous road due to its location, layout, and elevation. The road is only 24 feet wide in most locations and is situated at

- Determine necessary improvements to roadway geometry to improve safety;
- Assess the use of infrastructure upgrades to elevate the roadway on a trestle to encourage the passage of intertidal waters through the surrounding wetlands. The passage of these waters is important for the protection and nourishment of the wetlands and the function of the wetlands as a water retaining body; and
- Evaluate constructing a wetlands

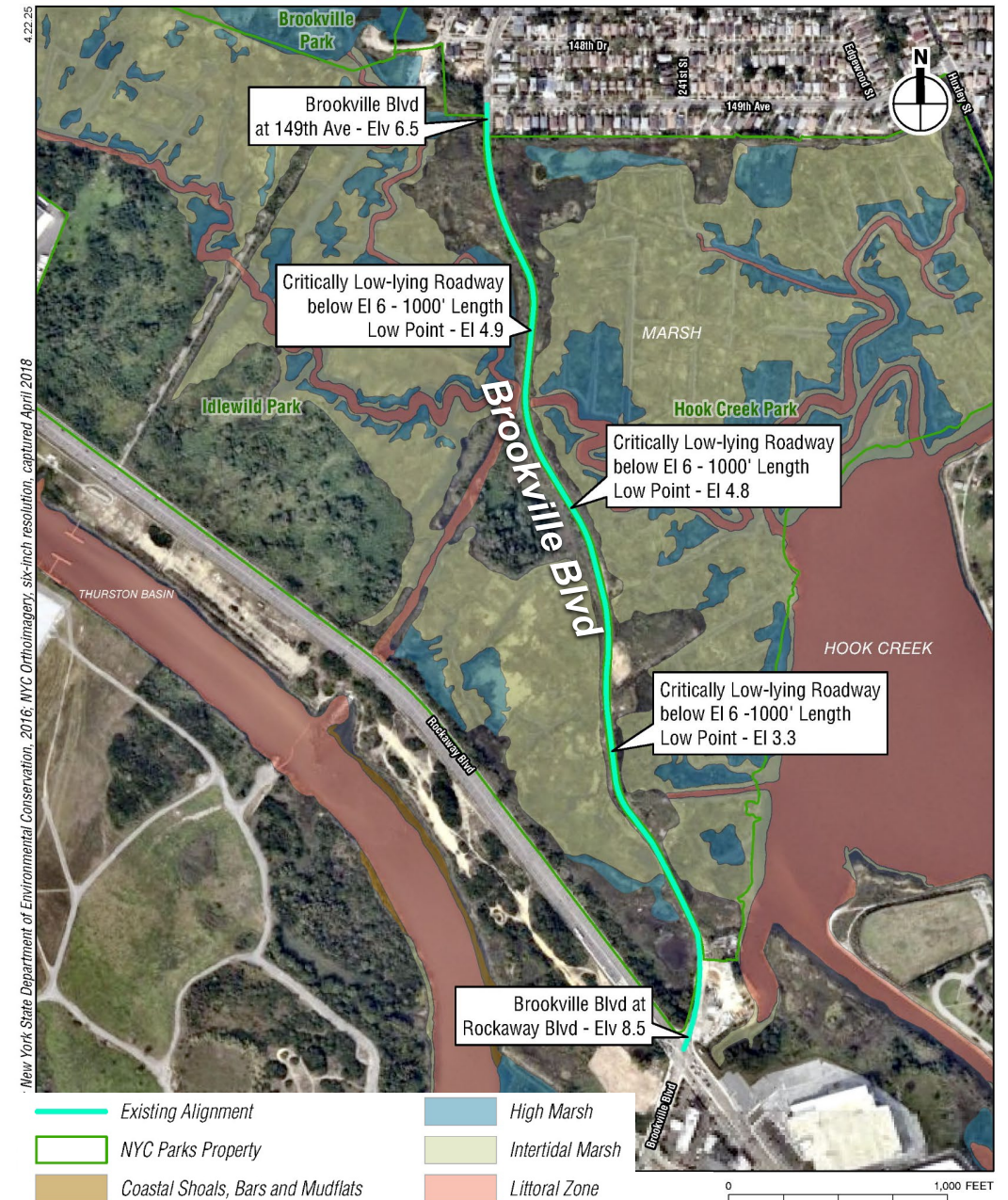


Source: NY Rising Community Reconstruction Program, Idlewild

Project Background & History

Brookville Boulevard – Chronic Flooding

- Low-Lying Roadway Surrounded by Tidal Wetlands
- Roadway has no storm sewers
- Regularly experiences high tide and coastal storm flooding
- Community and elected officials have been expressing concern for many years



Project Background & History

Brookville Boulevard – Chronic Flooding

Site Conditions – September 2025

- Dry weather
- No coastal storm
- High tide – slightly above normal
- Significant flooding at a low point
- Flooding incidents like this can cause roadway closures



Flooding at a low point in the road during a site visit on September 12, 2025

Project Background & History

Brookville Boulevard – Safety Issues

Poor sight distance around curves

No pedestrian or bicycle facilities

No roadside protection (guiderail/barrier)

Narrow roadway with no shoulders



Project Background & History

Brookville Boulevard – Illegal Dumping Issues



Secluded location

Negatively affects wetlands and habitats

No fencing to discourage dumping

Project Background & History

What we heard so far

- Historical issues & news articles
- Superstorm Sandy & NY Rising Study
- Senator Sanders coordination
- Community Board Meetings
- Elected Official Briefings

Notorious Snake Road to be subject of flood study

December 19, 2023



BROOKVILLE BOULEVARD, BETTER KNOWN TO LOCALS AS SNAKE ROAD, IS SCHEDULED TO UNDERGO A FLOOD MITIGATION STUDY. PHOTO VIA GOOGLE MAPS

Source: *Queens Daily Eagle*

Project Schedule & Scope

2

Overall Program Schedule

Typical Project Process

We are here!



Alternatives Analysis

Current phase of project; aimed at identifying concepts to advance into Environmental Review and Design

Environmental Review

NYC DOT undertakes an Environmental Review to examine potential impacts of feasible alternatives and choose a Preferred Alternative to advance to Design

Design

NYC DOT selects a team to refine and finalize the selected Flood Mitigation Design

Construction

NYC DOT uses the finalized design and selects a construction team to build the selected Flood Mitigation Solution

Current Phase

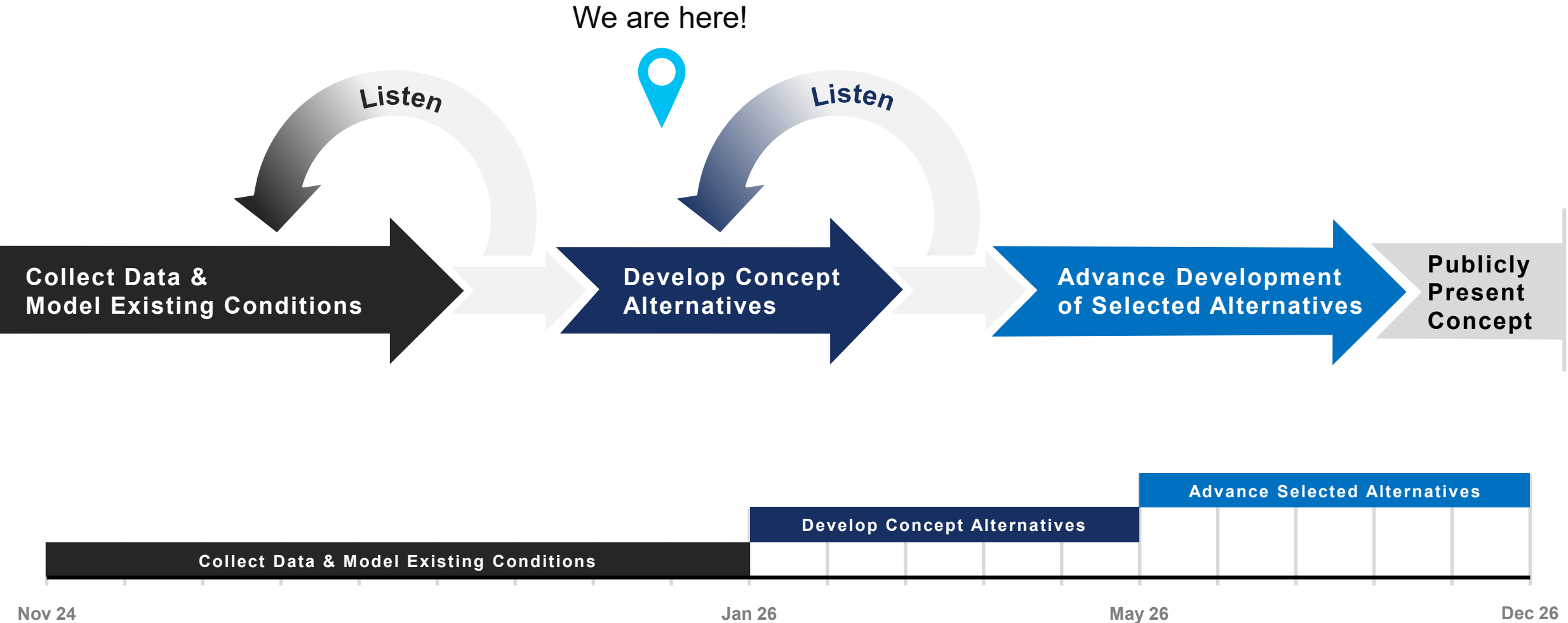
Funded

Future Phases

Additional Funding Required

Project Schedule & Scope

Project Development Process



Project Schedule & Scope

Project Timeline

We are here!



		Q4 2024		Q1 2025			Q2 2025			Q3 2025			Q4 2025			Q1 2026			Q2 2026			Q3 2026			Q4 2026		
TASK	DESCRIPTION	Nov	Dec	Jan	Feb	Mar	Apr	May	Jun	Jul	Aug	Sep	Oct	Nov	Dec	Jan	Feb	Mar	Apr	May	Jun	Jul	Aug	Sep	Oct	Nov	Dec
1	Data Collection																										
1.1	Project Identification/Feasibility														◆											◆	
1.2	New Surveys														◆											◆	
1.3	Traffic Study													◆			◆										
2	Climate Change Resiliency Assessment																										
2.1	Hydraulic and Hydrologic Modeling														◆				◆								
2.2	Climate Scenario Modeling														◆				◆								
3	Flood Mitigation Alternatives																										
3.1	Concepts Along Snake Road's Alignment																		◆								
3.2	Concepts to Shorten Snake Road																		◆								
3.3	Schematic Geometric Design																							◆			
4	Final Report																										◆
5	Community Engagement																										
6	Project Management																										

◆ Technical Memo Deliverable

Project Concepts

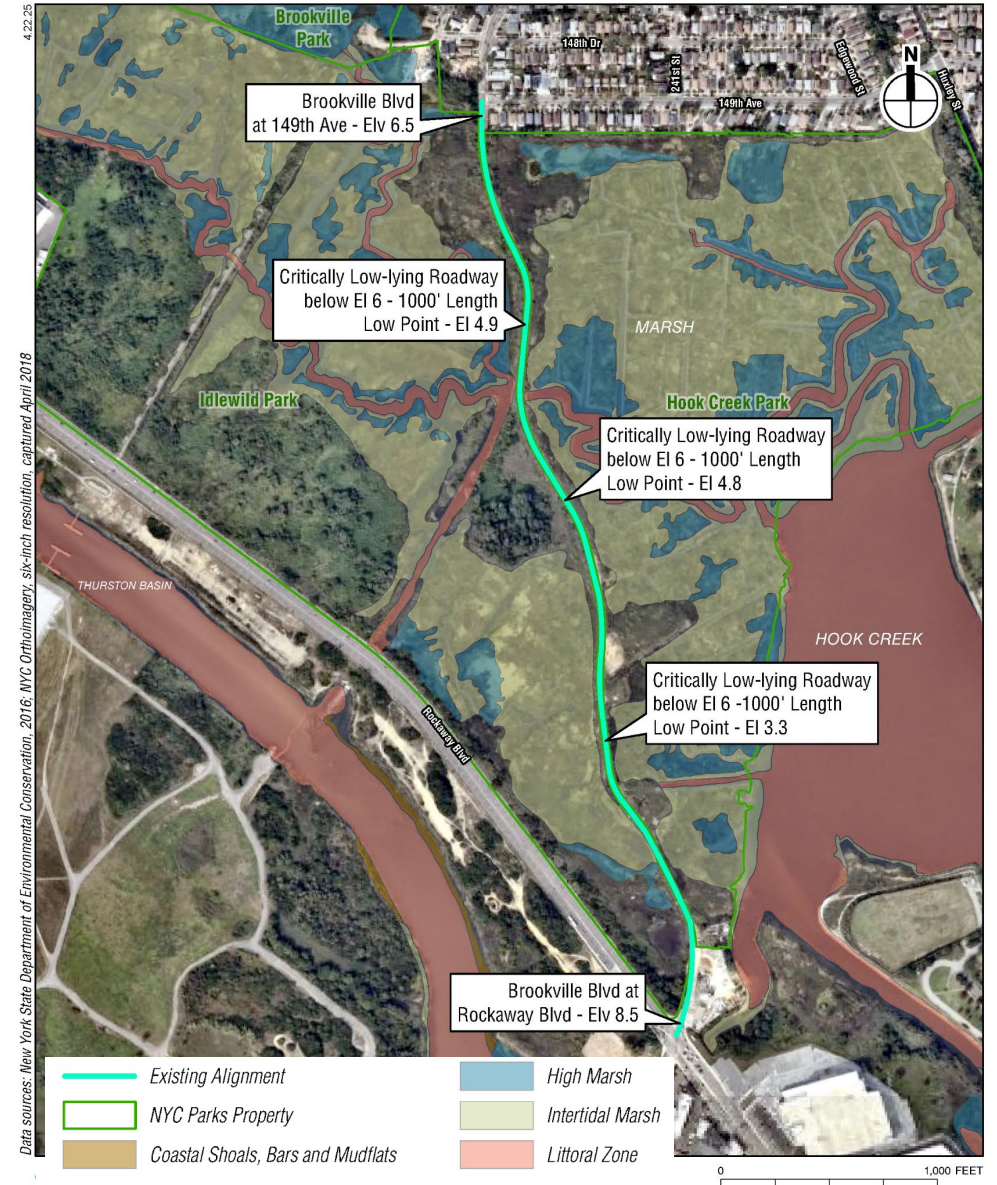
3

Project Concepts

Preliminary Concepts to Improve Brookville Boulevard

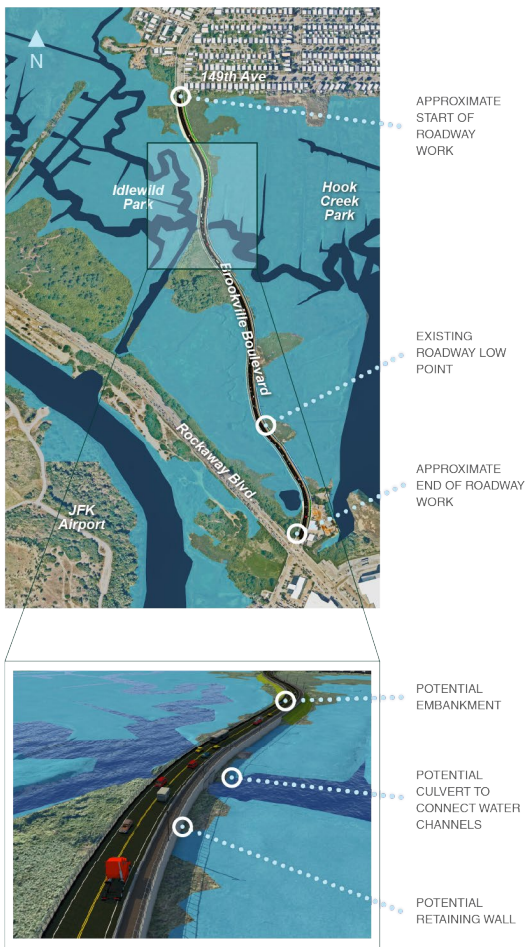
We Want Your Input!

- Horizontal Alignments / Roadway Location
- Roadway Elevations & Flooding Relief
- New Roadway Cross Section
- Other Potential Design Opportunities
- Environmental Benefits / Impacts / Mitigation

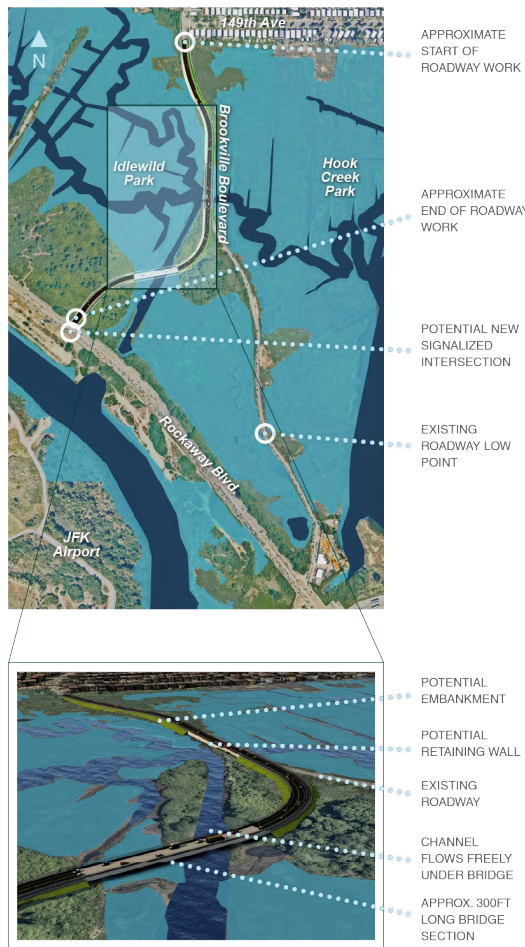


Horizontal Alignments/Roadway Location

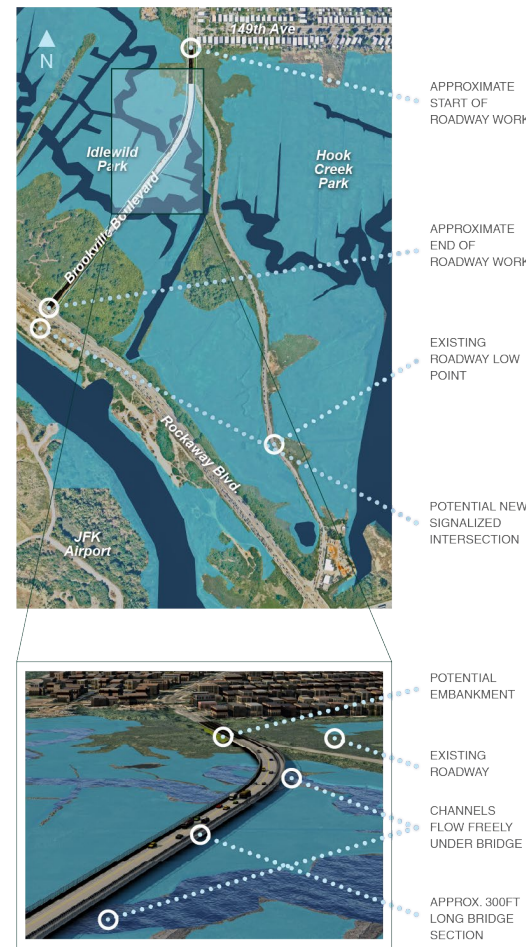
A-1 Rebuild on Existing Alignment



A-2 Partial Alignment



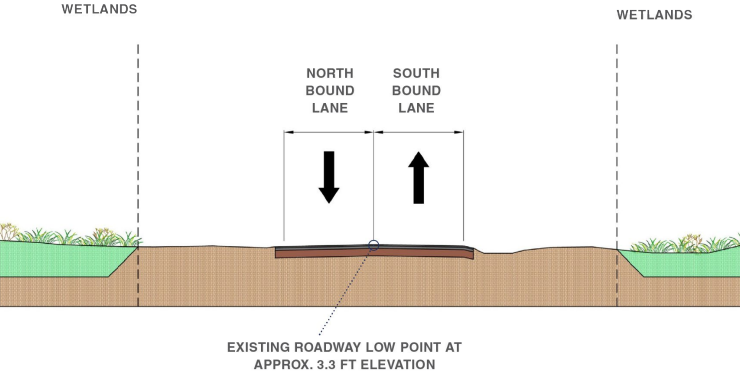
A-3 Full Realignment



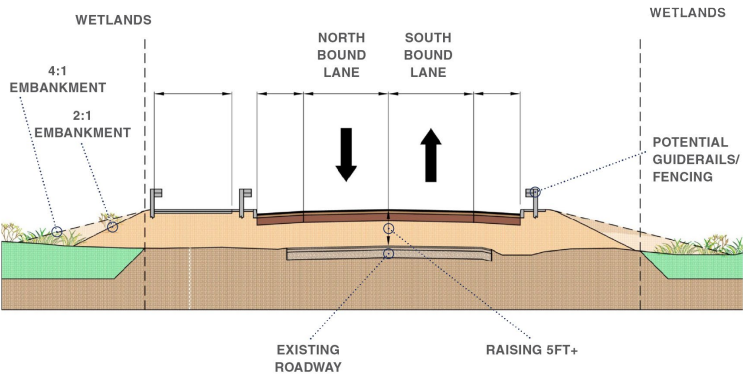
WETLAND REGIONS WATER CHANNELS

Roadway Elevation & Treatments

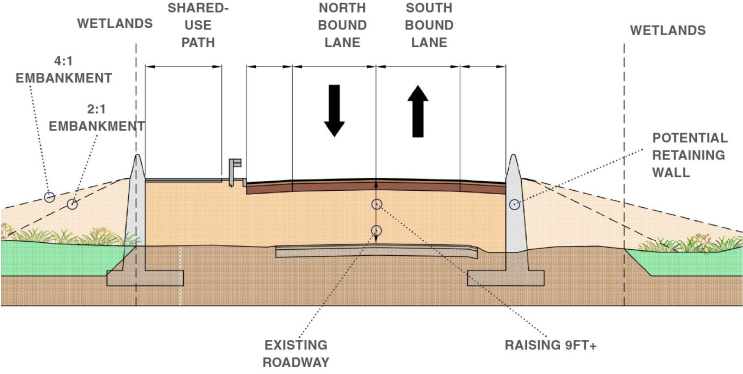
E-1 Current Roadway Elevation



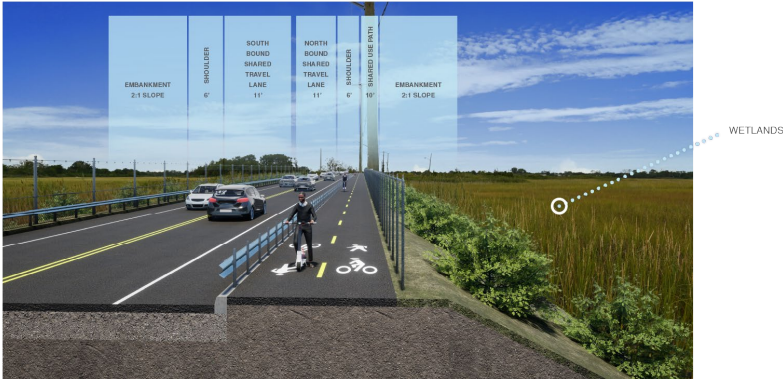
E-2 Roadway Raised to 8+ft



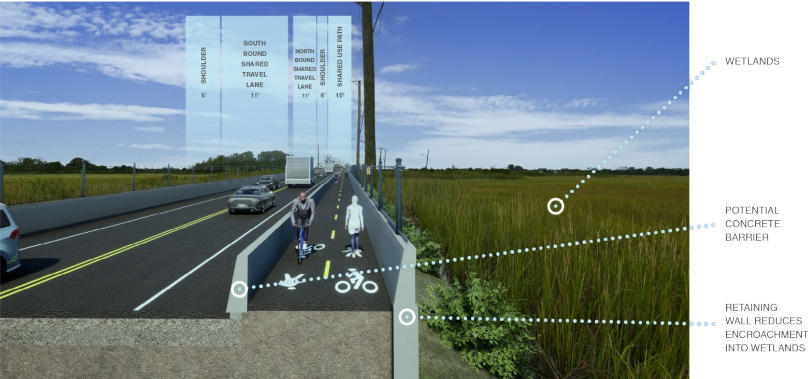
E-3 Roadway Raised to 12+ft



Embankment (Widened Corridor with Shared Use Path Shown)



Retaining Wall (Widened Corridor with Shared Use Path Shown)

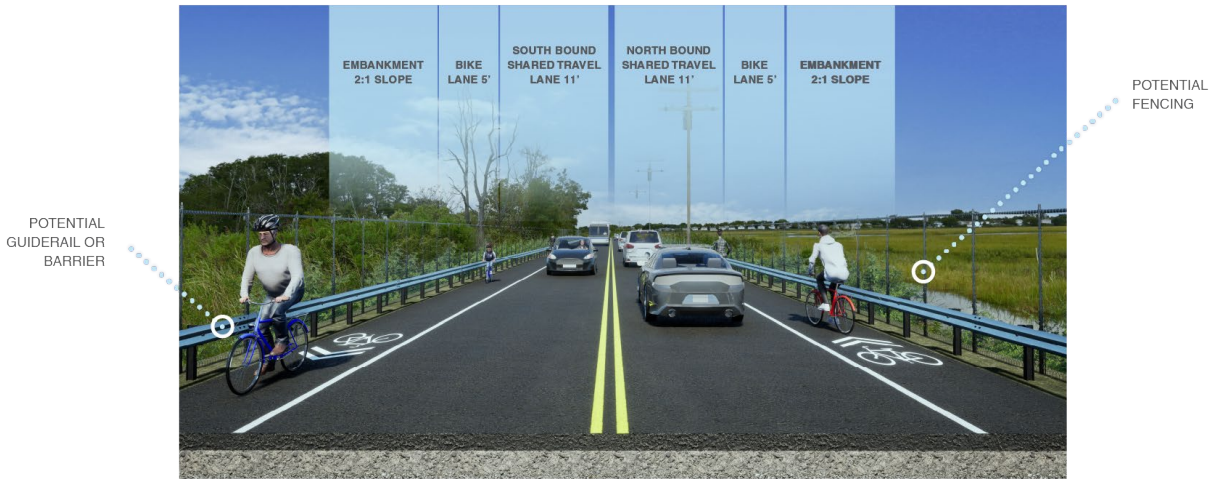


Bridge (Widened Corridor with Shared Use Path Shown)

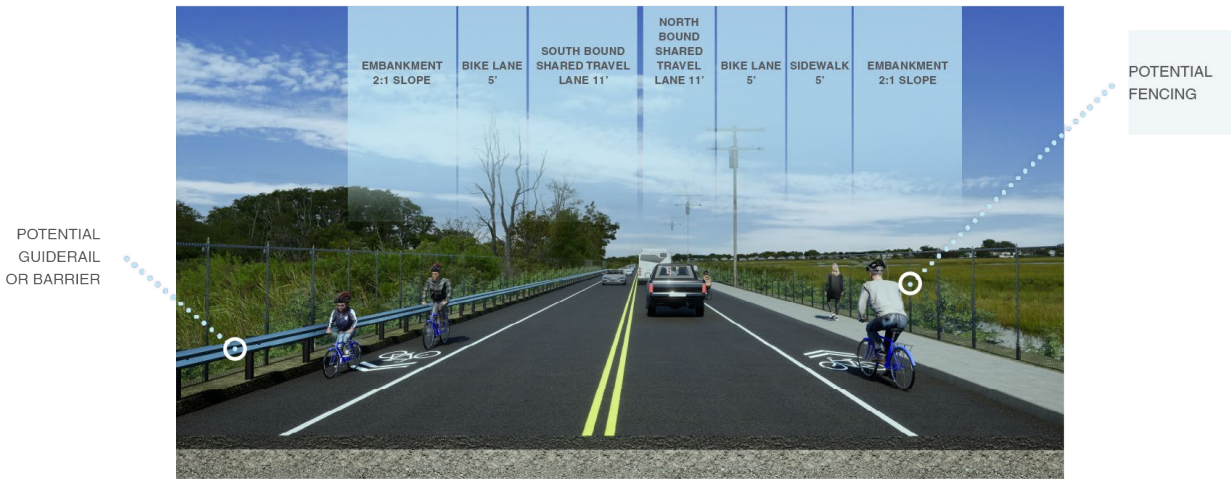


Roadway Section

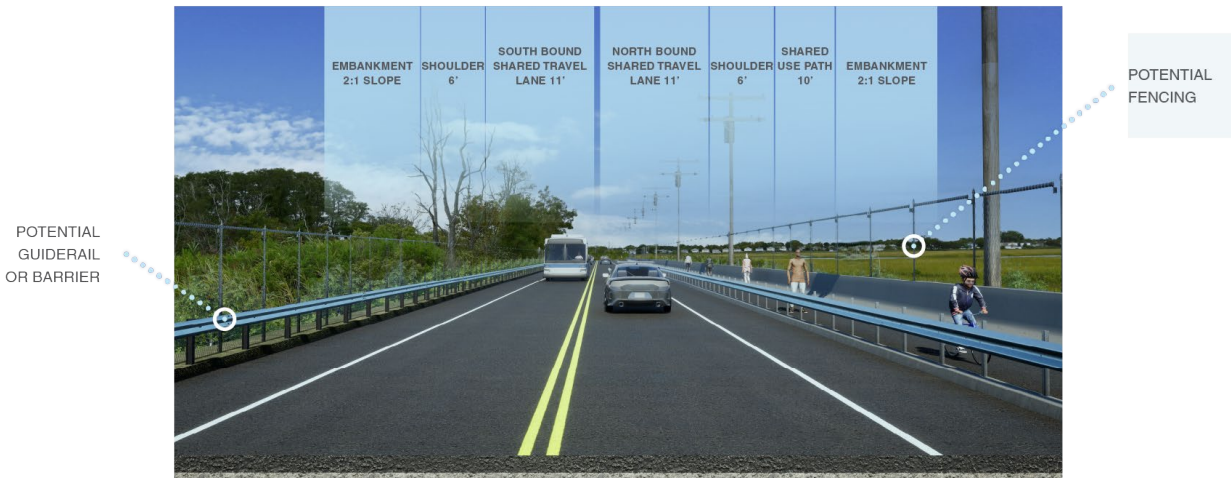
C-1 Narrow Corridor



C-2 Widened Corridor with Sidewalk



C-3 Widened Corridor with Shared Use Path



Open House

4

Open House

We Want Your Input!

DOT Project Contact

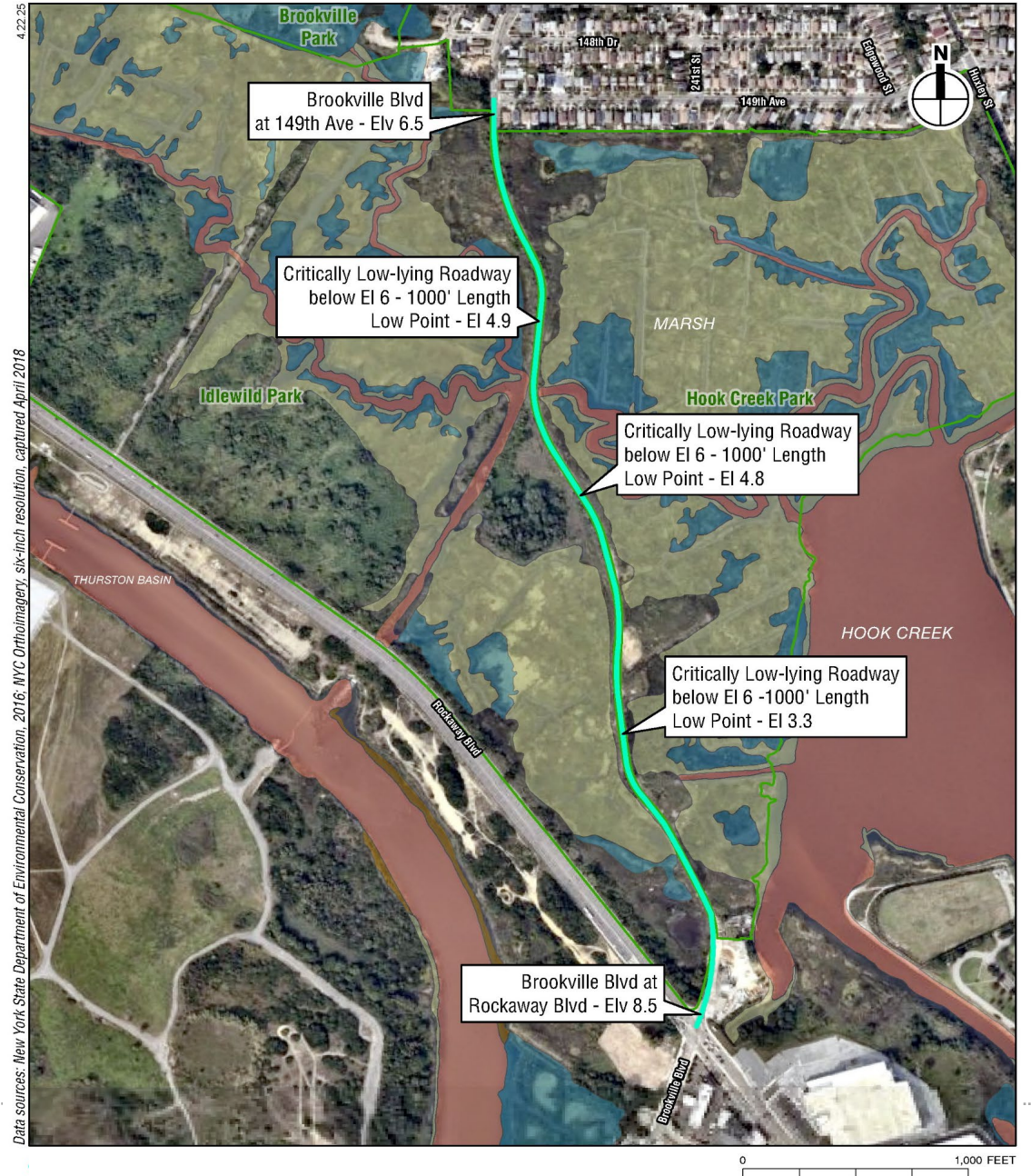
Andrew Arcese
Borough Planner, Community Boards 12 and 13
Queens Borough Commissioner's Office
NYC Department of Transportation

aarcese@dot.nyc.gov

212-839-2510

Project Website:

<https://nycdotprojects.info/project/brookville-boulevard-flood-mitigation-study>



Existing Conditions

Brookville Boulevard

Snake Road North Side - Looking South



POOR VISIBILITY OF
ROADWAY AHEAD

Snake Road Middle Section - Looking North



FREQUENT DUMPING
AND DEBRIS

Snake Road North Side - Looking South



FREQUENT HIGH TIDE
FLOODING

EXISTING ROADWAY
LOW POINT

Snake Road North Side - Looking South



LONG QUEUE OF VEHICLES
APPROACHING ROCKAWAY
BOULEVARD

Snake Road Middle Section - Looking North



POOR PAVEMENT
CONDITION - CRACKING

POOR ROADWAY
SIDE TREATMENT

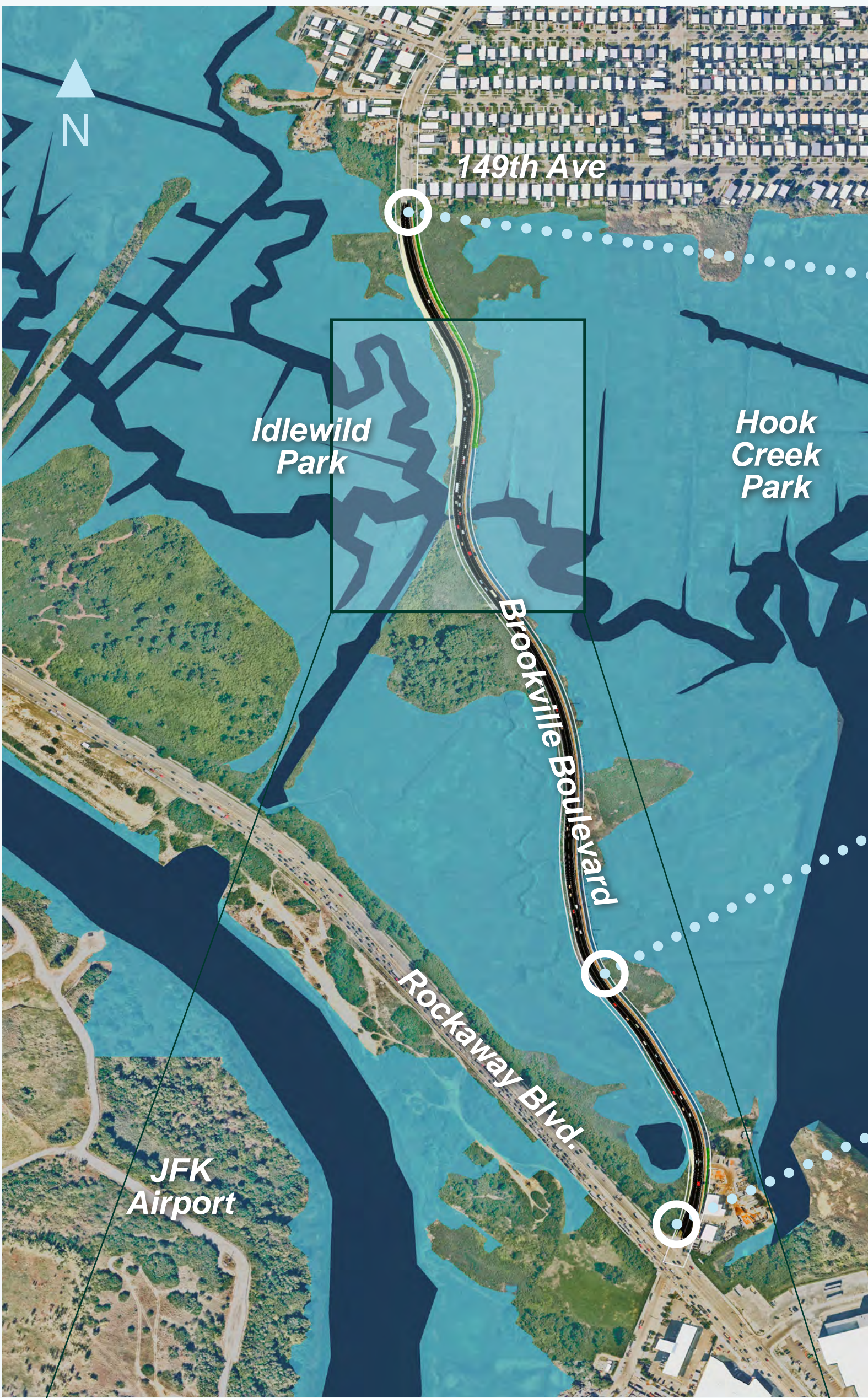
WETLANDS ADJACENT
TO ROADWAY

What else have you observed?

Options for Road Alignment

Brookville Boulevard | Concepts

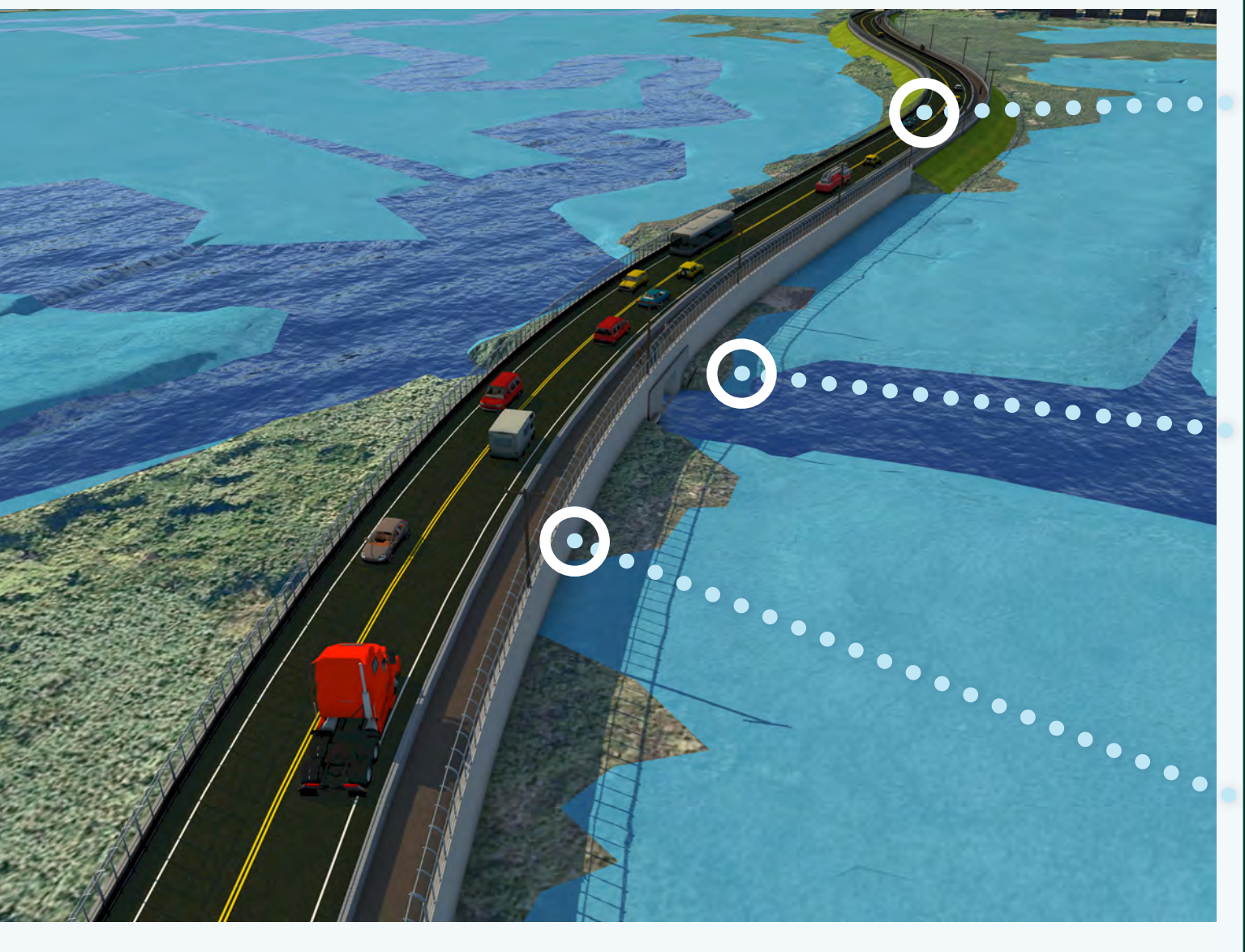
A-1 Rebuild on Existing Alignment



APPROXIMATE
START OF
ROADWAY
WORK

EXISTING
ROADWAY LOW
POINT

APPROXIMATE
END OF ROADWAY
WORK



POTENTIAL
EMBANKMENT

POTENTIAL
CULVERT TO
CONNECT WATER
CHANNELS

POTENTIAL
RETAINING WALL

A-2 Partial Alignment

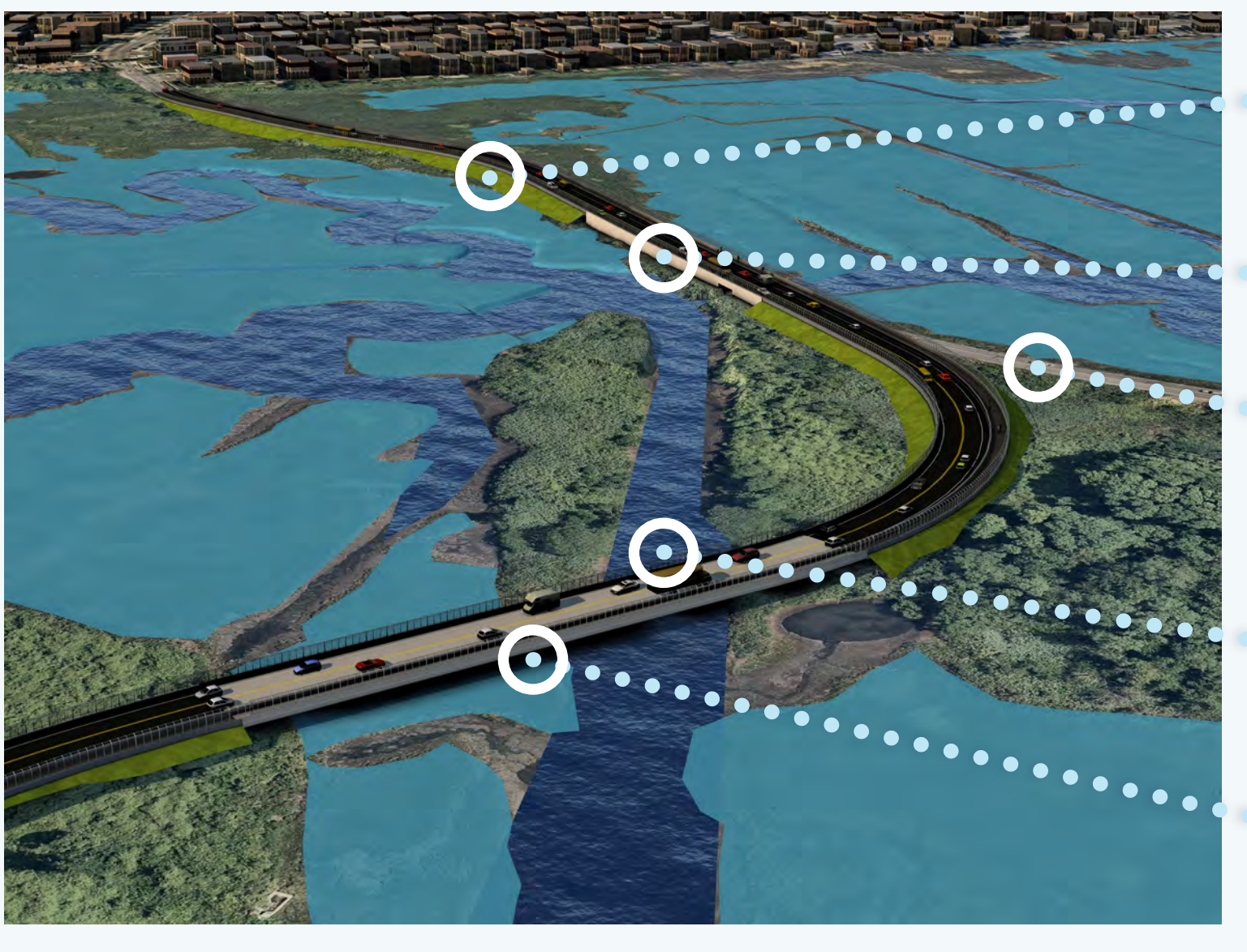


APPROXIMATE
START OF
ROADWAY WORK

APPROXIMATE
END OF ROADWAY
WORK

POTENTIAL NEW
SIGNALIZED
INTERSECTION

EXISTING
ROADWAY LOW
POINT



POTENTIAL
EMBANKMENT

POTENTIAL
RETAINING WALL

EXISTING
ROADWAY

CHANNEL
FLOWS FREELY
UNDER BRIDGE

APPROX. 300FT
LONG BRIDGE
SECTION

A-3 Full Realignment

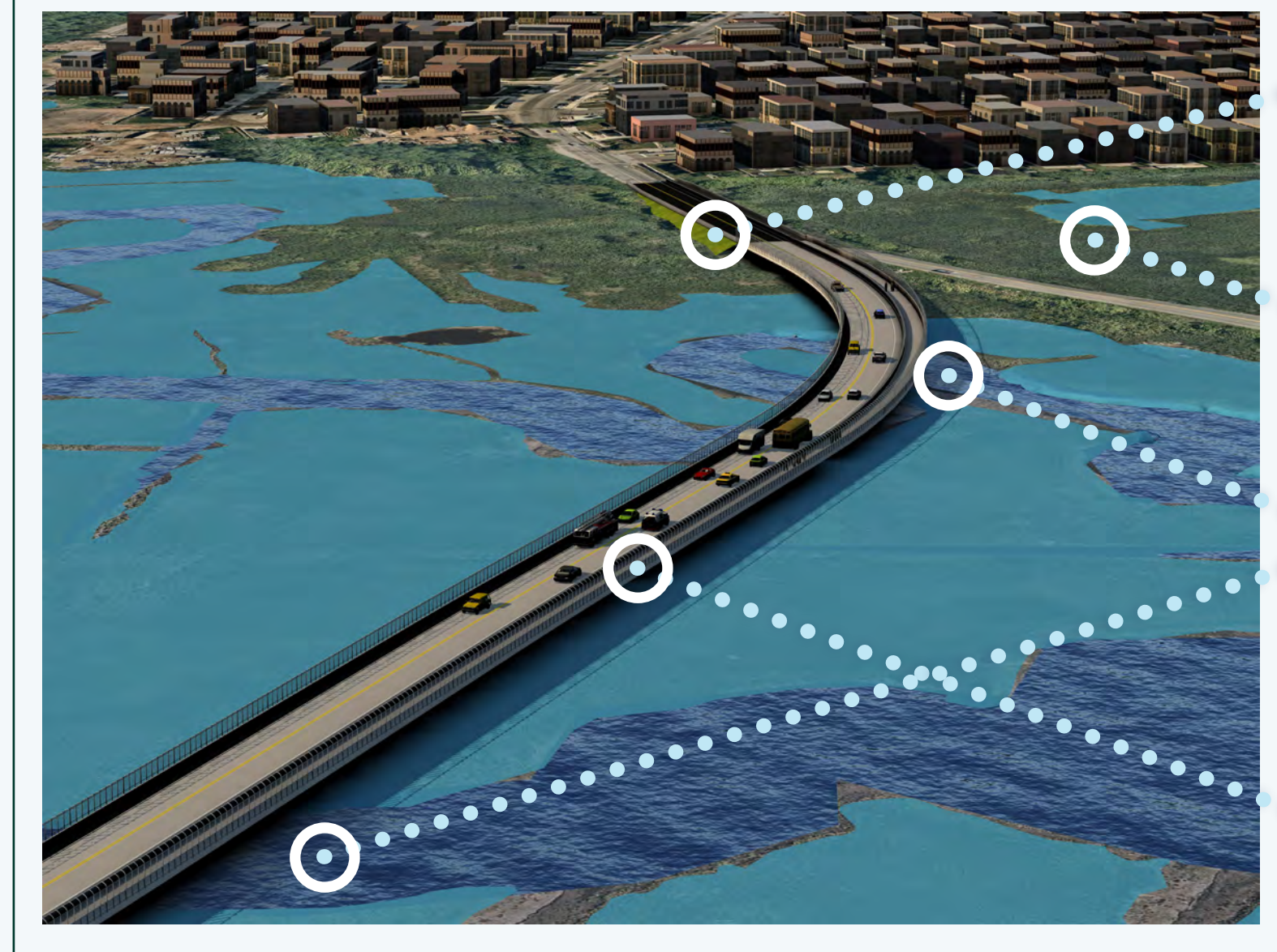


APPROXIMATE
START OF
ROADWAY WORK

APPROXIMATE
END OF
ROADWAY WORK

EXISTING
ROADWAY LOW
POINT

POTENTIAL NEW
SIGNALIZED
INTERSECTION



POTENTIAL
EMBANKMENT

EXISTING
ROADWAY

CHANNELS
FLOW FREELY
UNDER BRIDGE

APPROX. 300FT
LONG BRIDGE
SECTION

WETLAND REGIONS WATER CHANNELS

Options for Road Alignment

Brookville Boulevard - Concepts

A-1 Rebuild on Existing Alignment



	LOW	HIGH
FLOOD RELIEF & SAFETY IMPROVEMENTS	●	●
WETLAND IMPACTS	●	●
WETLAND MITIGATION & CONNECTIVITY	●	●
CONSTRUCTION IMPACTS	●	●
COST	●	●
FEASIBILITY & PERMITTING DIFFICULTY	●	●

A-2 Partial Alignment



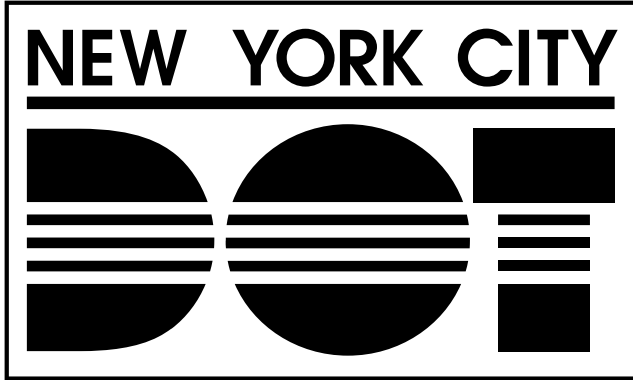
	LOW	HIGH
FLOOD RELIEF & SAFETY IMPROVEMENTS	●	●
WETLAND IMPACTS	●	●
WETLAND MITIGATION & CONNECTIVITY	●	●
CONSTRUCTION IMPACTS	●	●
COST	●	●
FEASIBILITY & PERMITTING DIFFICULTY	●	●

A-3 Full Realignment



	LOW	HIGH
FLOOD RELIEF & SAFETY IMPROVEMENTS	●	●
WETLAND IMPACTS	●	●
WETLAND MITIGATION & CONNECTIVITY	●	●
CONSTRUCTION IMPACTS	●	●
COST	●	●
FEASIBILITY & PERMITTING DIFFICULTY	●	●

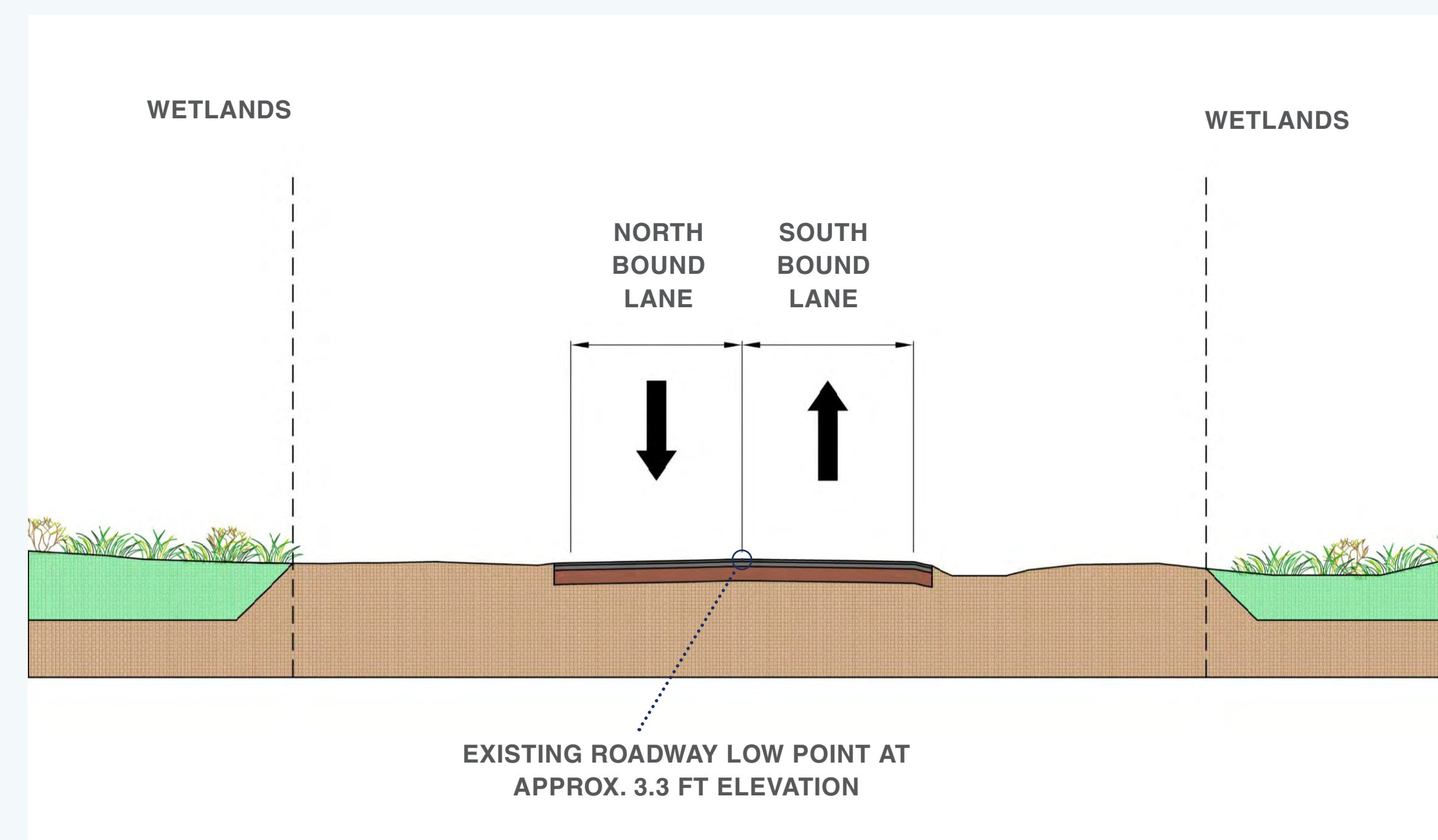
Share Your Thoughts



Options for Road Elevation

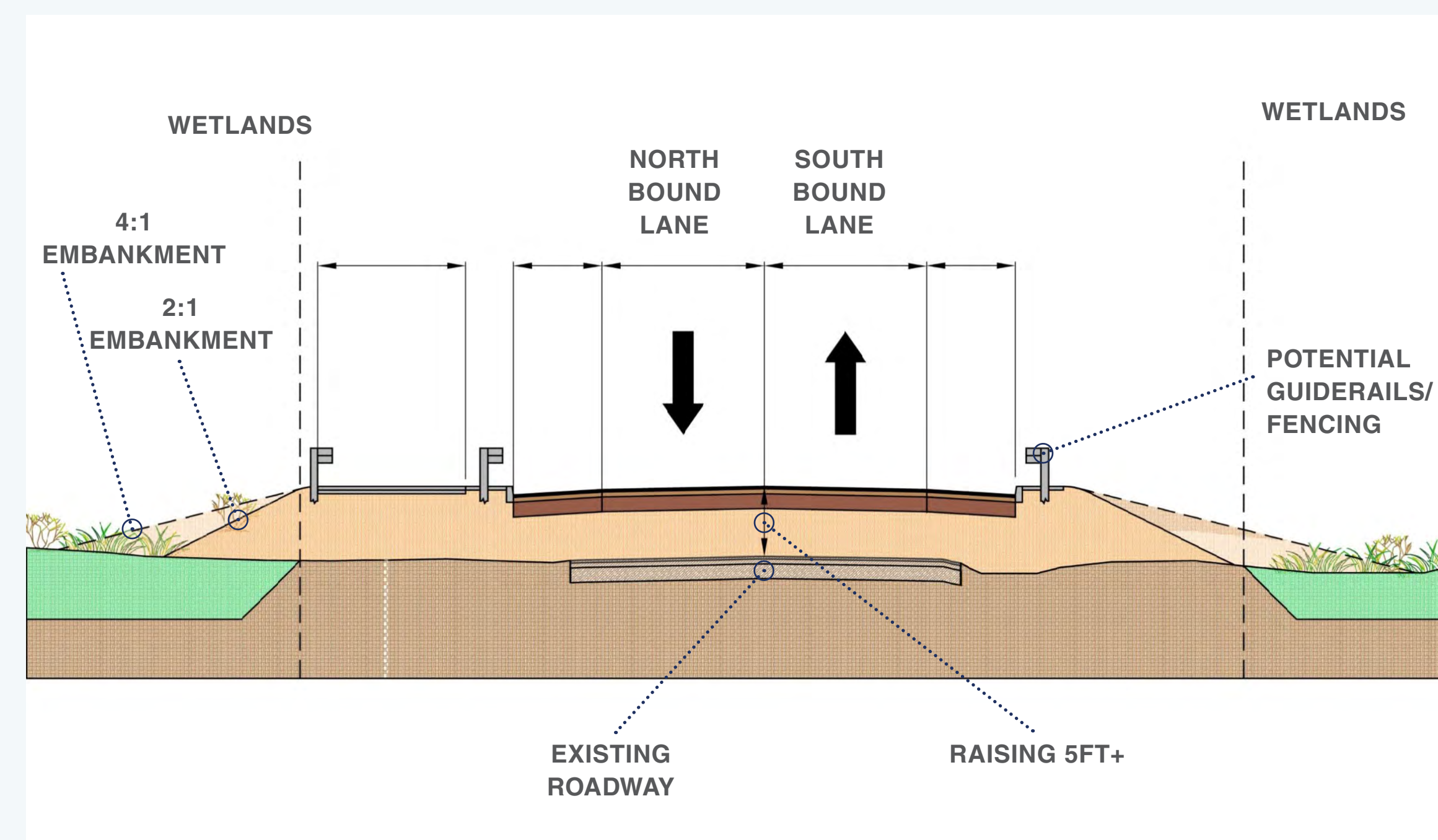
Brookville Boulevard - Concepts

E-1 Current Roadway Elevation



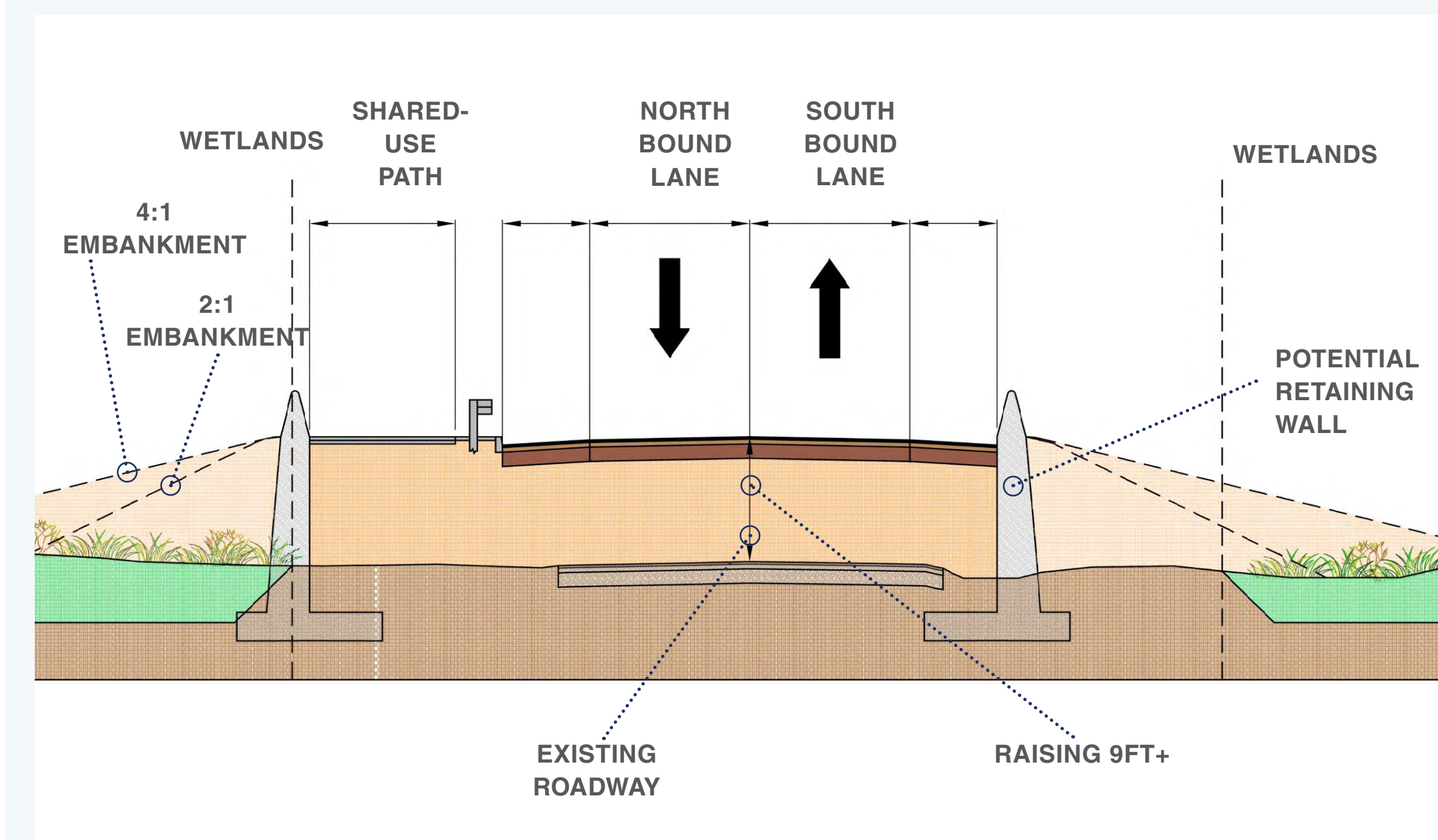
	LOW	HIGH
FLOOD RELIEF	●	
WETLAND IMPACTS	●	
CONSTRUCTION IMPACTS	●	
COST	●	

E-2 Roadway Raised to 8+ft



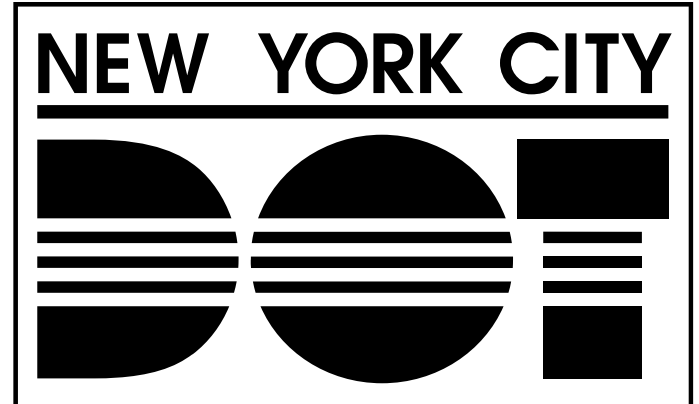
	LOW	HIGH
FLOOD RELIEF	●	●
WETLAND IMPACTS	●	●
CONSTRUCTION IMPACTS	●	●
COST	●	●

E-3 Roadway Raised to 12+ft



	LOW	HIGH
FLOOD RELIEF	●	●
WETLAND IMPACTS	●	●
CONSTRUCTION IMPACTS	●	●
COST	●	●

Share Your Thoughts

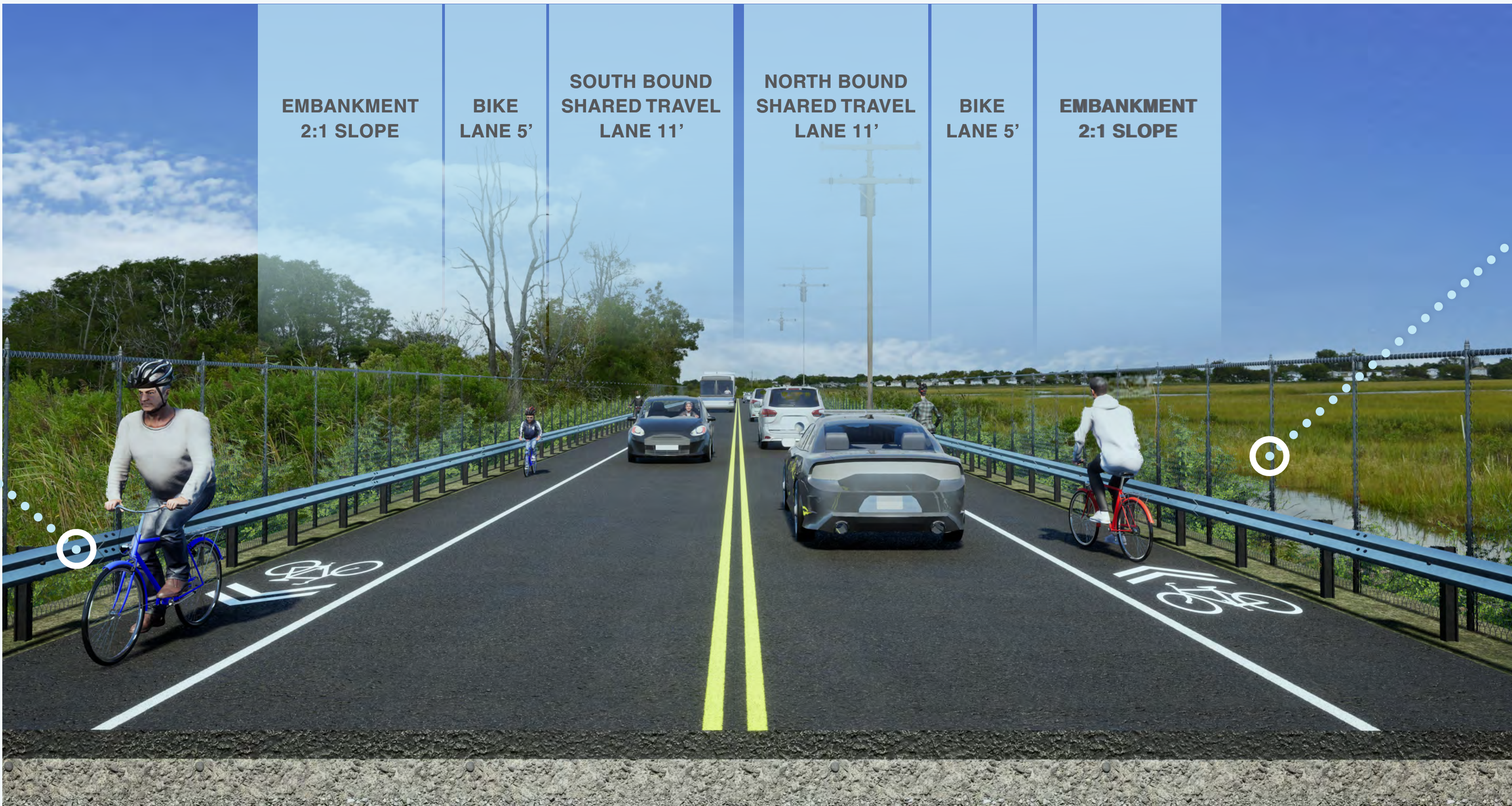


Options for Corridors

Brookville Boulevard | Concepts

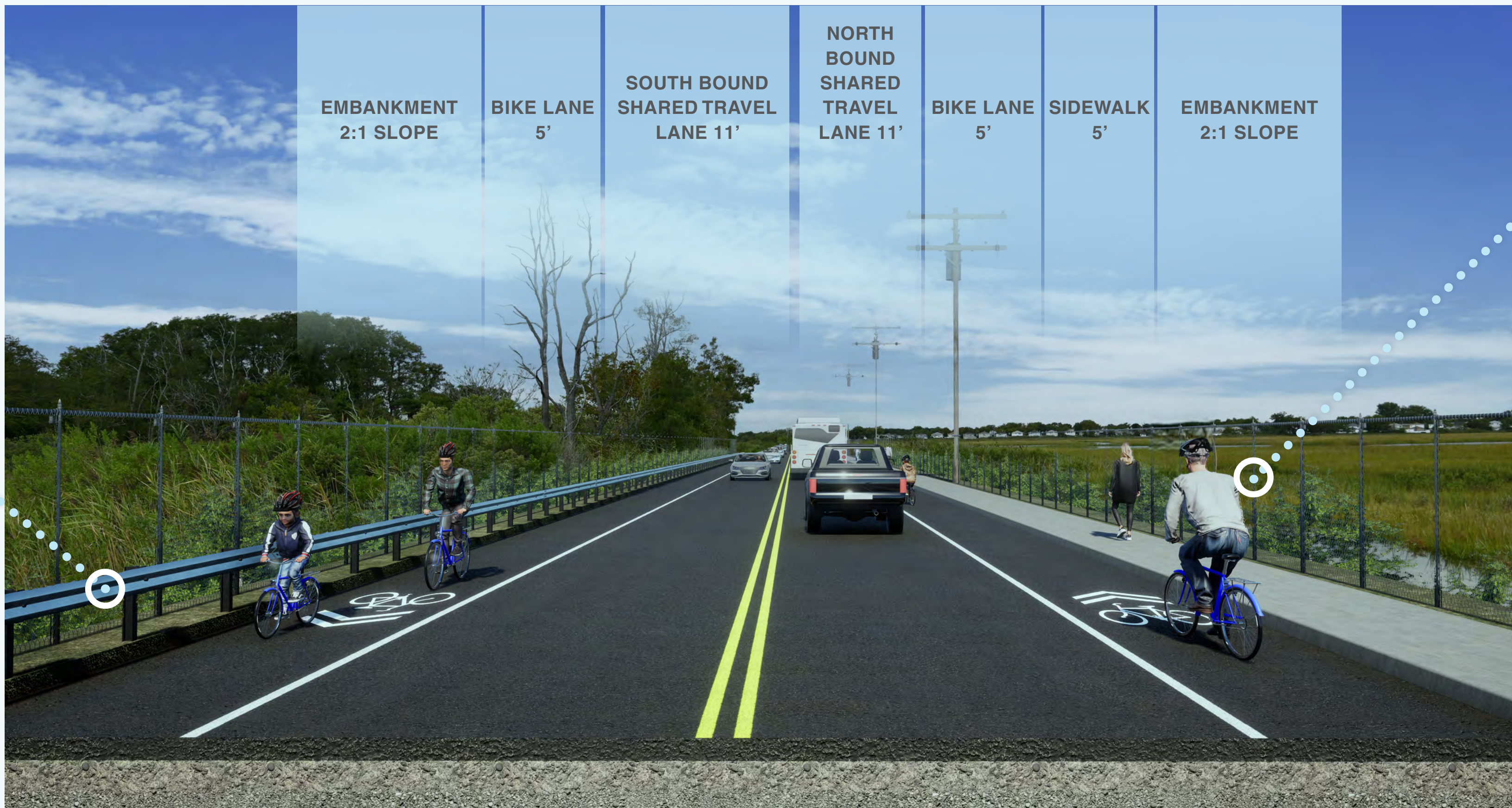
C-1

Narrow Corridor



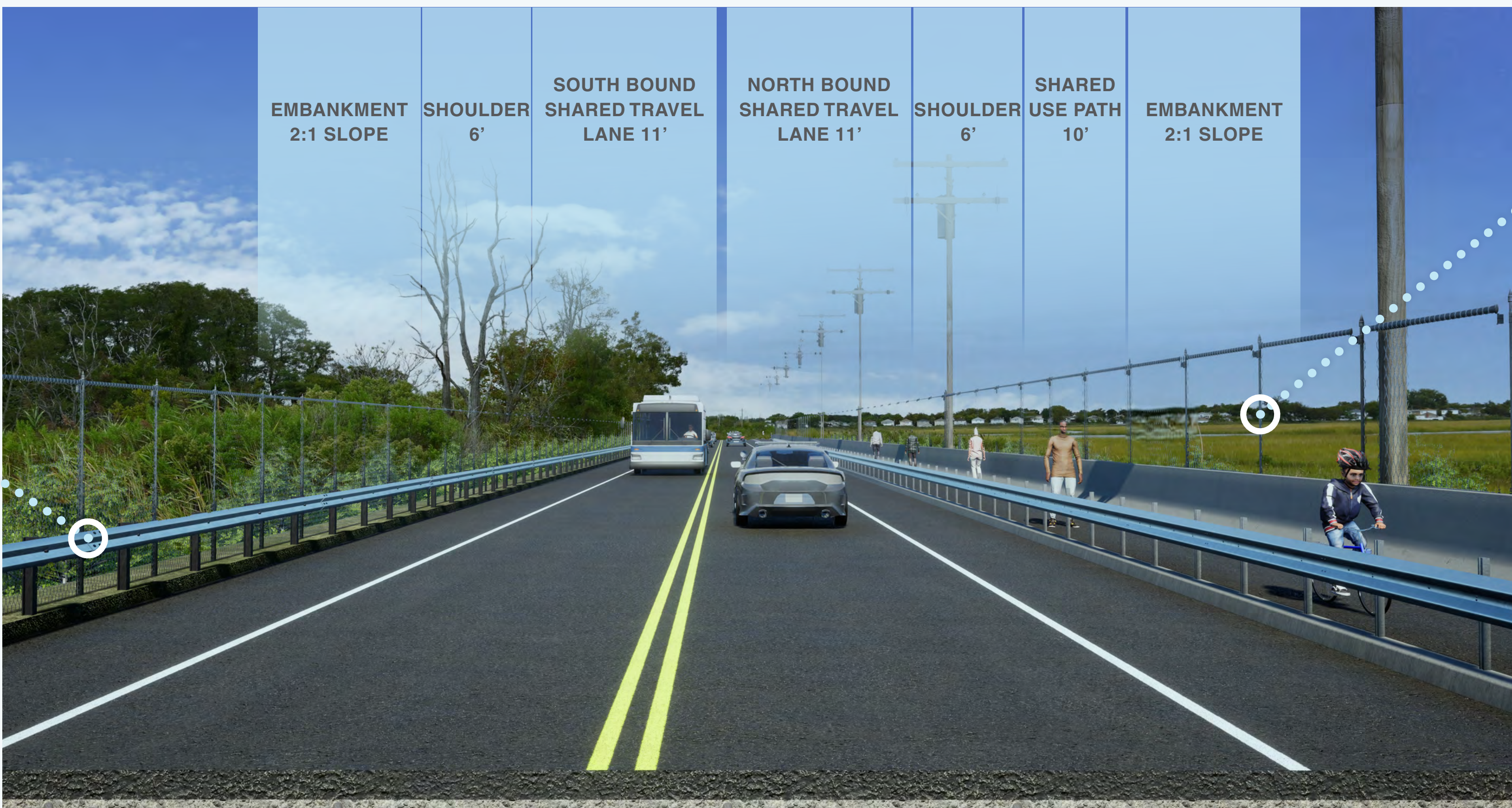
C-2

Widened Corridor with Sidewalk



C-3

Widened Corridor with Shared Use Path



Options for Corridors

Share Your Thoughts

C-1

Narrow Corridor



	LOW	HIGH
SAFETY IMPROVEMENTS	<div></div>	<div></div>
WETLAND IMPACTS	<div></div>	<div></div>
CONSTRUCTION IMPACTS	<div></div>	<div></div>
COST	<div></div>	<div></div>

C-2

Widened Corridor with Sidewalk



	LOW	HIGH
SAFETY IMPROVEMENTS	<div></div>	<div></div>
WETLAND IMPACTS	<div></div>	<div></div>
CONSTRUCTION IMPACTS	<div></div>	<div></div>
COST	<div></div>	<div></div>

C-3

Widened Corridor with Shared-Use Path

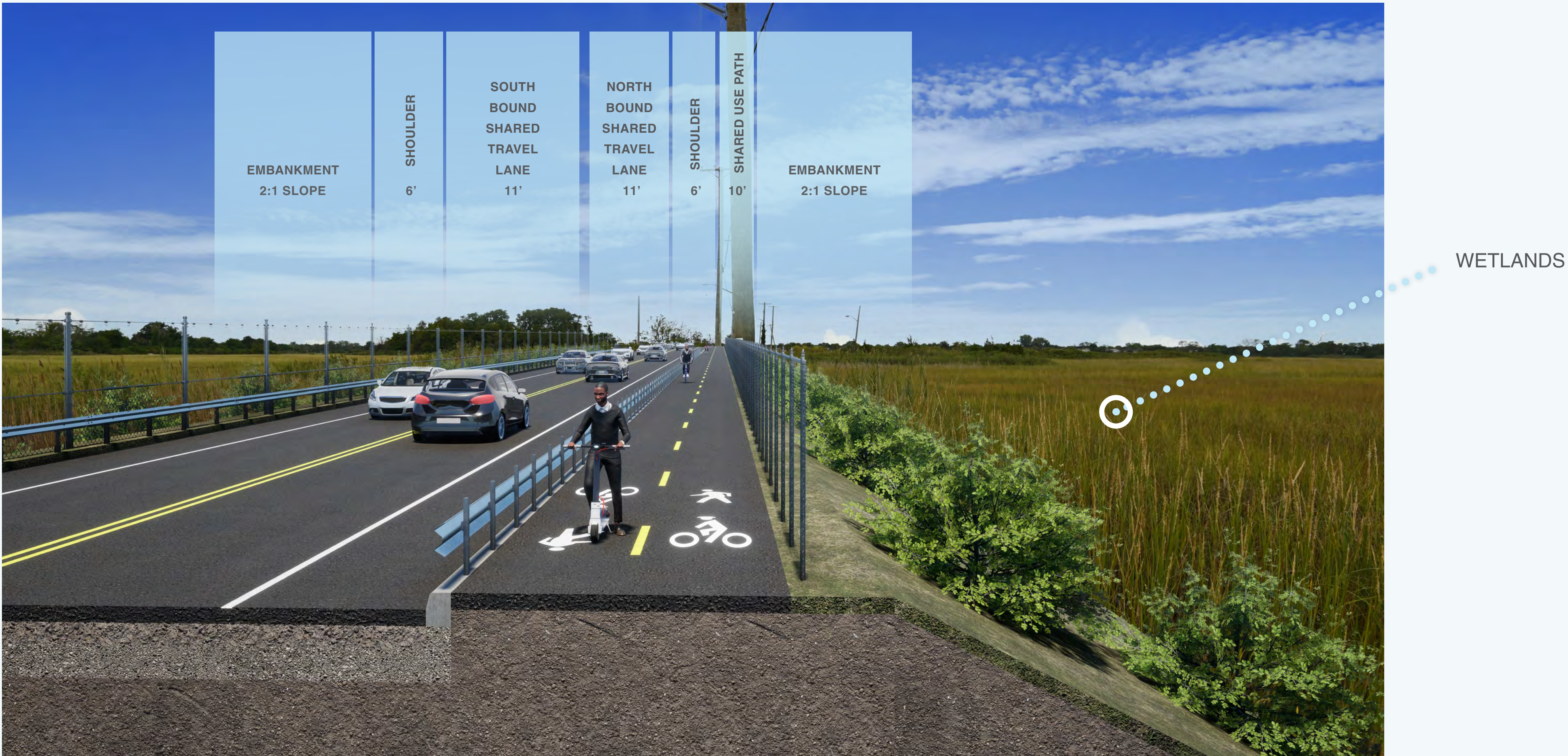


	LOW	HIGH
SAFETY IMPROVEMENTS	<div></div>	<div></div>
WETLAND IMPACTS	<div></div>	<div></div>
CONSTRUCTION IMPACTS	<div></div>	<div></div>
COST	<div></div>	<div></div>

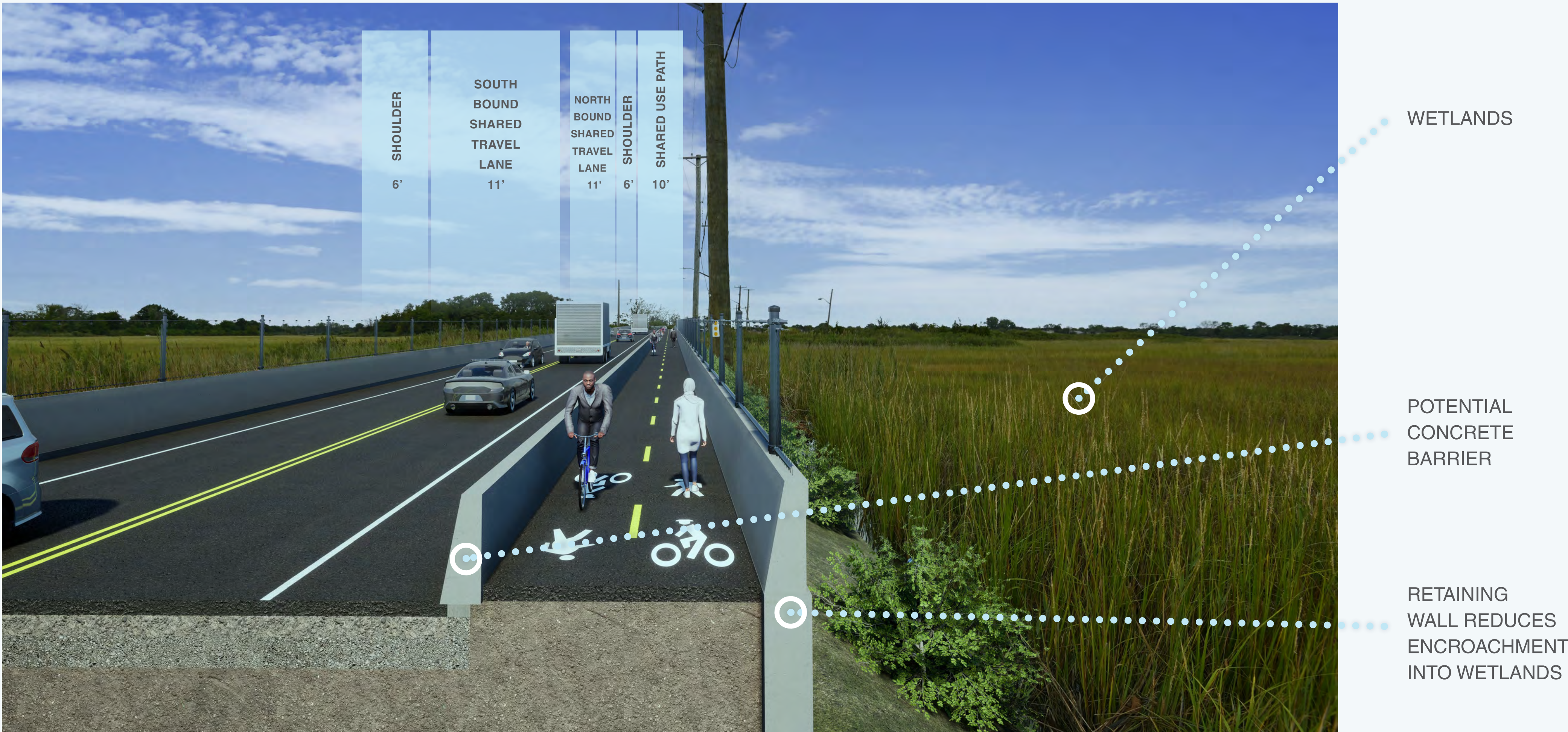
Potential Roadway Treatments

Brookville Boulevard | Concepts

Embankment (Widened Corridor with Shared Use Path Shown)



Retaining Wall (Widened Corridor with Shared Use Path Shown)



Bridge (Widened Corridor with Shared Use Path Shown)



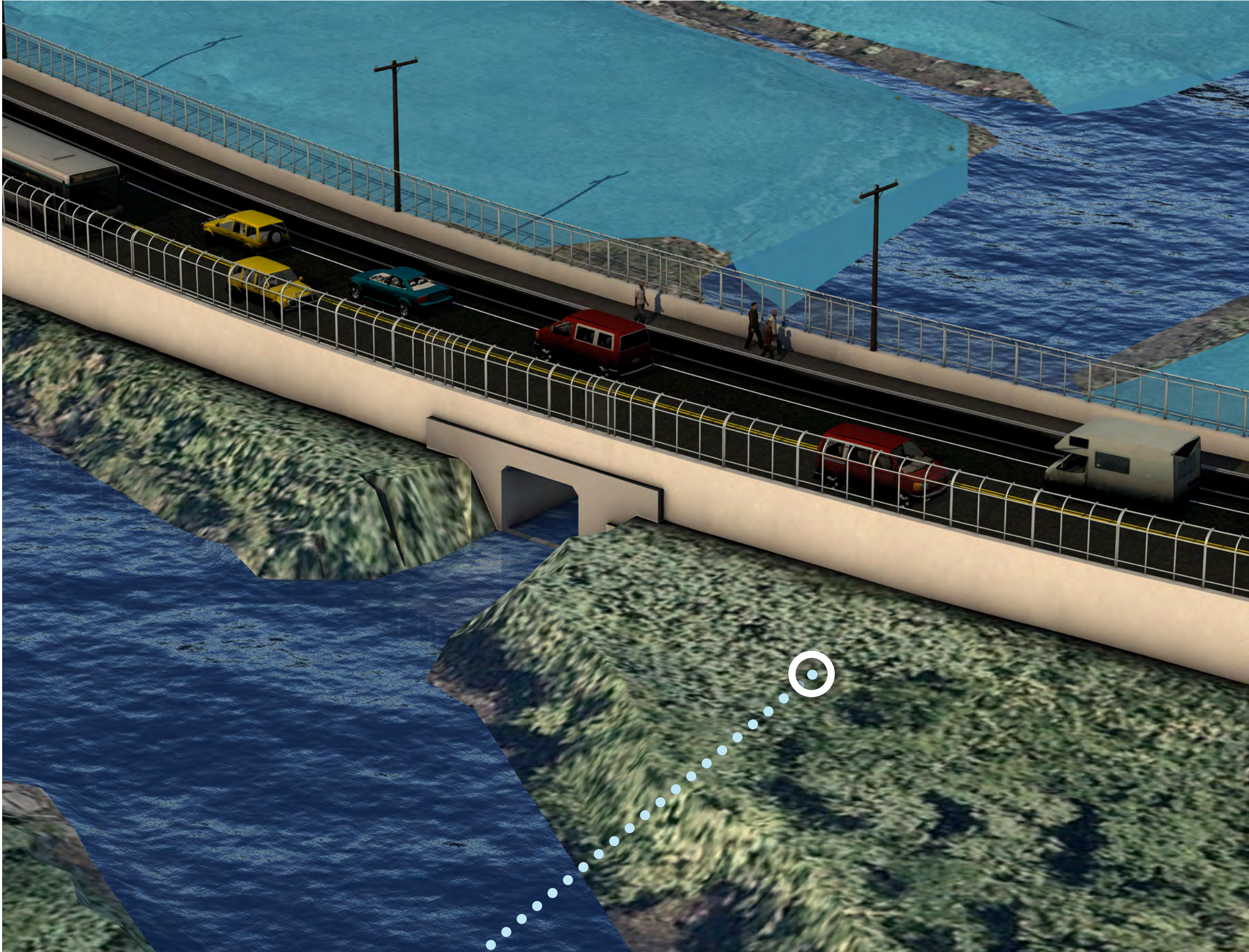
Recreational and Environmental Opportunities

Scenic Overlook



VIEW LOOKING AT IDLEWILD PARK

Culvert



ALLOWS WILDLIFE PASSAGE ACROSS
ROADWAY CORRIDOR

Shared Use Path



NASSAU EXPRESSWAY
SHARED USE PATH

Share Your Thoughts