



46TH AVE PLAZA PROPOSAL

Public Space Unit . October 2021

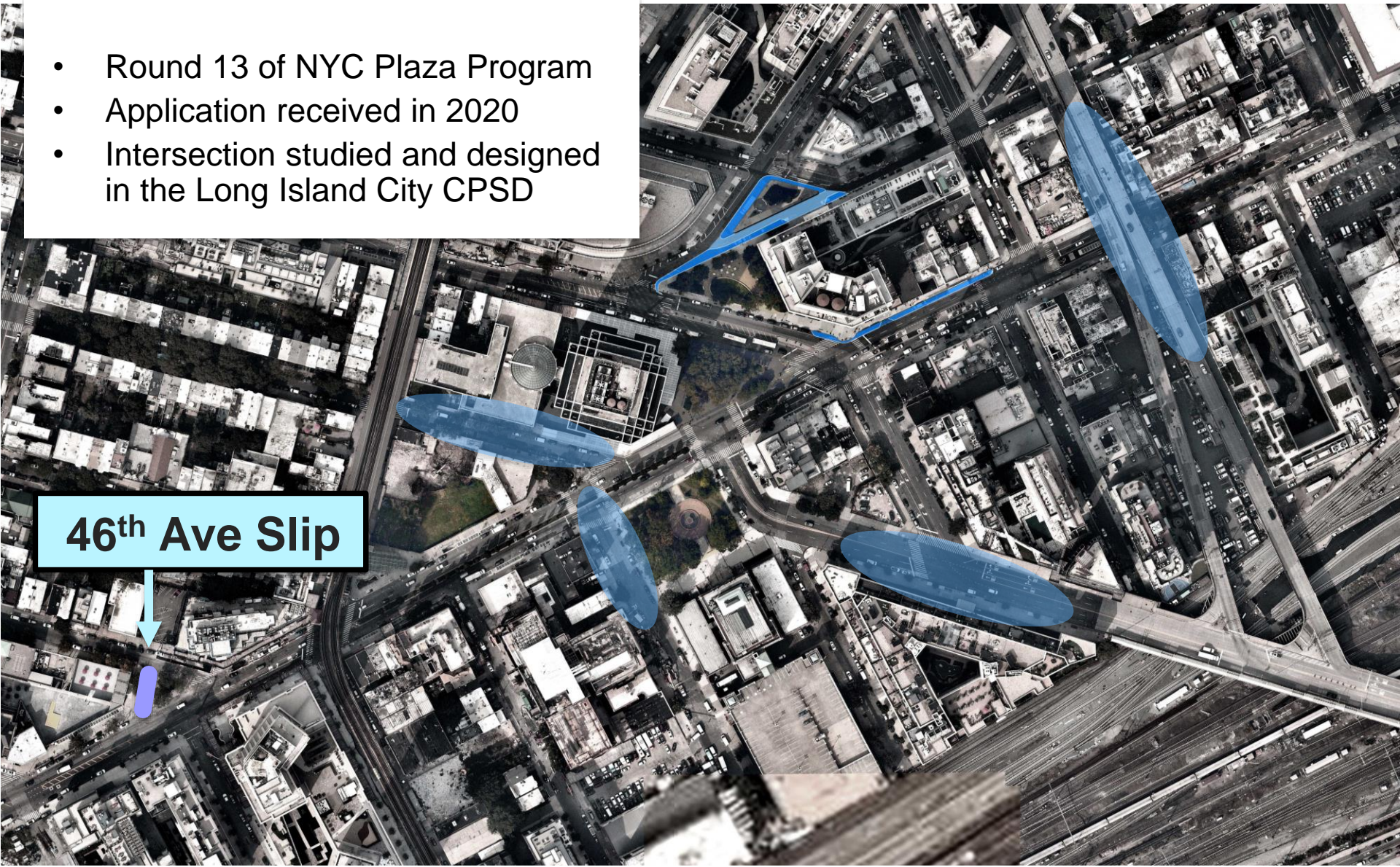


46th Ave Plaza Application



46th Ave Plaza Application

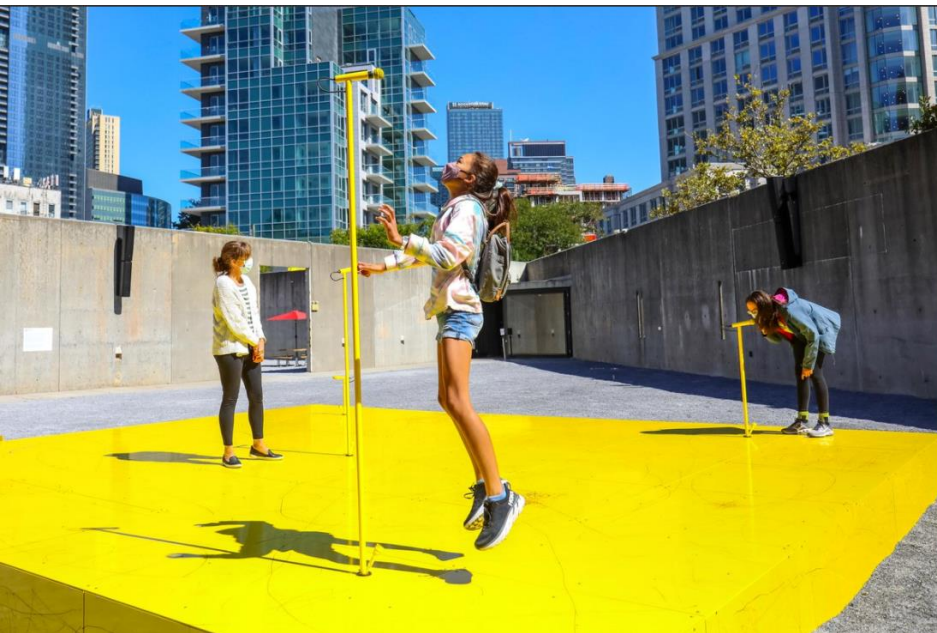
- Round 13 of NYC Plaza Program
- Application received in 2020
- Intersection studied and designed in the Long Island City CPSD



46th Ave Slip

Plaza Partner: MoMA PS1

- MoMA PS1 champions art and artists at the intersection of the social, cultural, and political issues of their time. Providing audiences with the agency to ask questions, access to knowledge, and a forum for public debate, PS1 has offered insight into artists' diverse worldviews for more than 40 years. Founded in 1976 by Alanna Heiss, the institution was a defining force in the alternative space movement in New York City, transforming a nineteenth century public schoolhouse in Long Island City into a site for artistic experimentation and creative expression. PS1 has been a member of New York City's Cultural Institutions Group (CIG) since 1982, and affiliated with The Museum of Modern Art since 2000.



PROGRAMMING

Partners are encouraged to program their plazas, particularly with community organizations and events.

Site will now be listed in SAPO (Street Activity Permit Office) as a plaza and not a street.

Any organization can apply for a SAPO permit to program the new plaza.



Diversity Plaza // Dance Troupe



Parkside Plaza // UNI Project

MAINTENANCE RESPONSIBILITIES

The maintenance partner would be responsible for basic maintenance tasks including litter removal, snow clearance, furniture maintenance, and horticultural care.



SUMMER 2021: POP-UP PLAZA

Inaugurated in early July 2021



SUMMER 2021: POP-UP PLAZA

Inaugurated in early July 2021



SUMMER 2021: FREE PROGRAMMING

Hosted by MoMA PS1

- ***Niki de Saint Phalle Family Day***
Sunday, August 8th
- ***Create Your Dream Block with Block Builder***
Sunday, September 26th



SUMMER 2021: FREE PROGRAMMING

Hosted by MoMA PS1

Pennants & Poets

Saturday, September 25th



SUMMER 2021: COMMUNITY ENGAGEMENT

1. In-person, outdoor workshop: July 8, 2021

NYCDOT and MoMA PS1 set up a table outside with informational material and maps and spoke with the public about the project

2. Virtual Workshop: July 14, 2021

NYCDOT and MoMA PS1 co-hosted a virtual public workshop to gather feedback on design concepts

3. Online Survey: Late July – September

Disseminated via social media, email blasts, and on-site flyers with QR codes

- Gathered 667 responses
- 92% of respondents live near this location



WHAT WE LEARNED

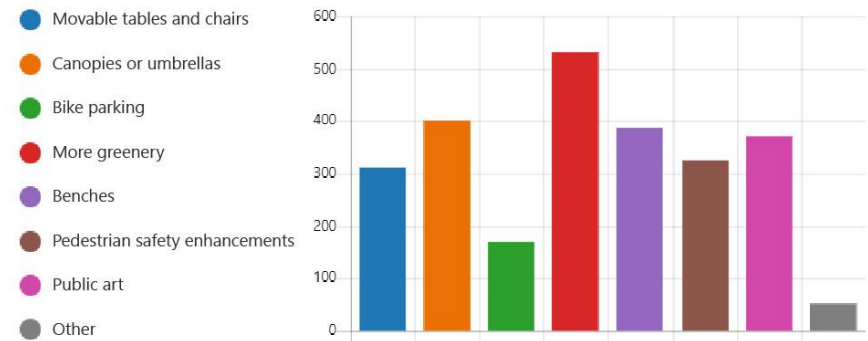
Recommended improvements:

- More bike infrastructure
- More trees and greenery
- Add more seating
- Add crosswalks across Jackson Ave and improve pedestrian connections
- Narrowing of roadway at Jackson Ave
- Traffic calming

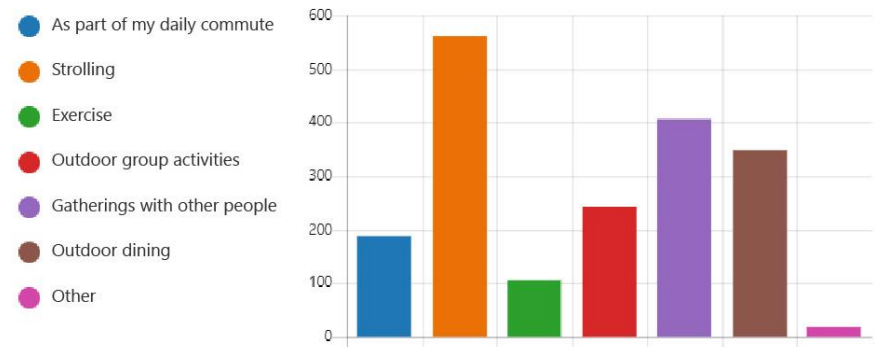
Issues highlighted:

- Mostly related to poor vehicular behavior, such as speeding, double-parking, cars not stopping for pedestrians, etc.
- Concerns over cyclists and scooters crossing through the plaza
- Lack of infrastructure to support pedestrians along Jackson Ave

What amenities would you like to see in the new plaza?



How would you want to use the proposed plaza on the slip street at 46th Ave and Jackson Ave?

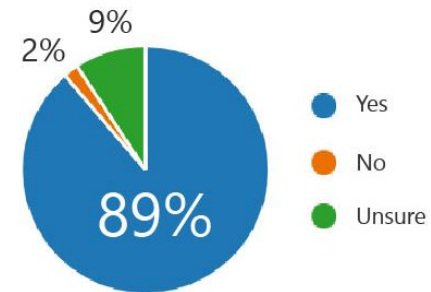


* Graphics show results from the online survey

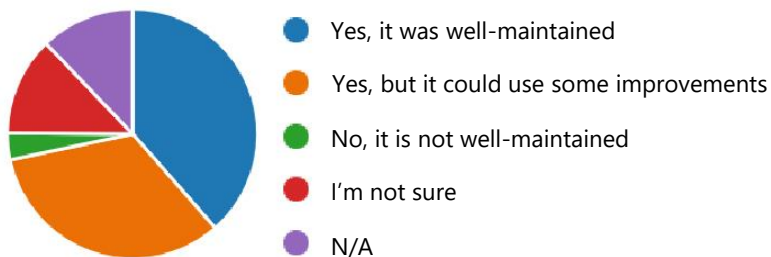
STRONG COMMUNITY SUPPORT

1. Most people we have engaged with support the full pedestrianization of this slip street.
2. The CM Jimmy Van Bramer's office awarded \$40,000 to program the new plaza
3. The public space is well-used.
4. Most survey respondents considered the pop-up plaza to be well-maintained.

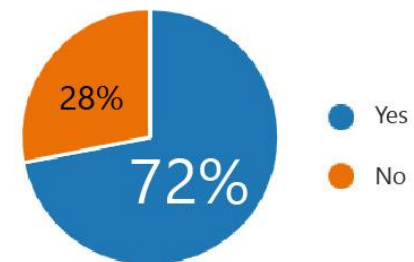
Would you like to see the pop-up plaza at 46th Ave transformed into a permanent plaza?



Do you feel that the pop-up plaza is well-maintained?

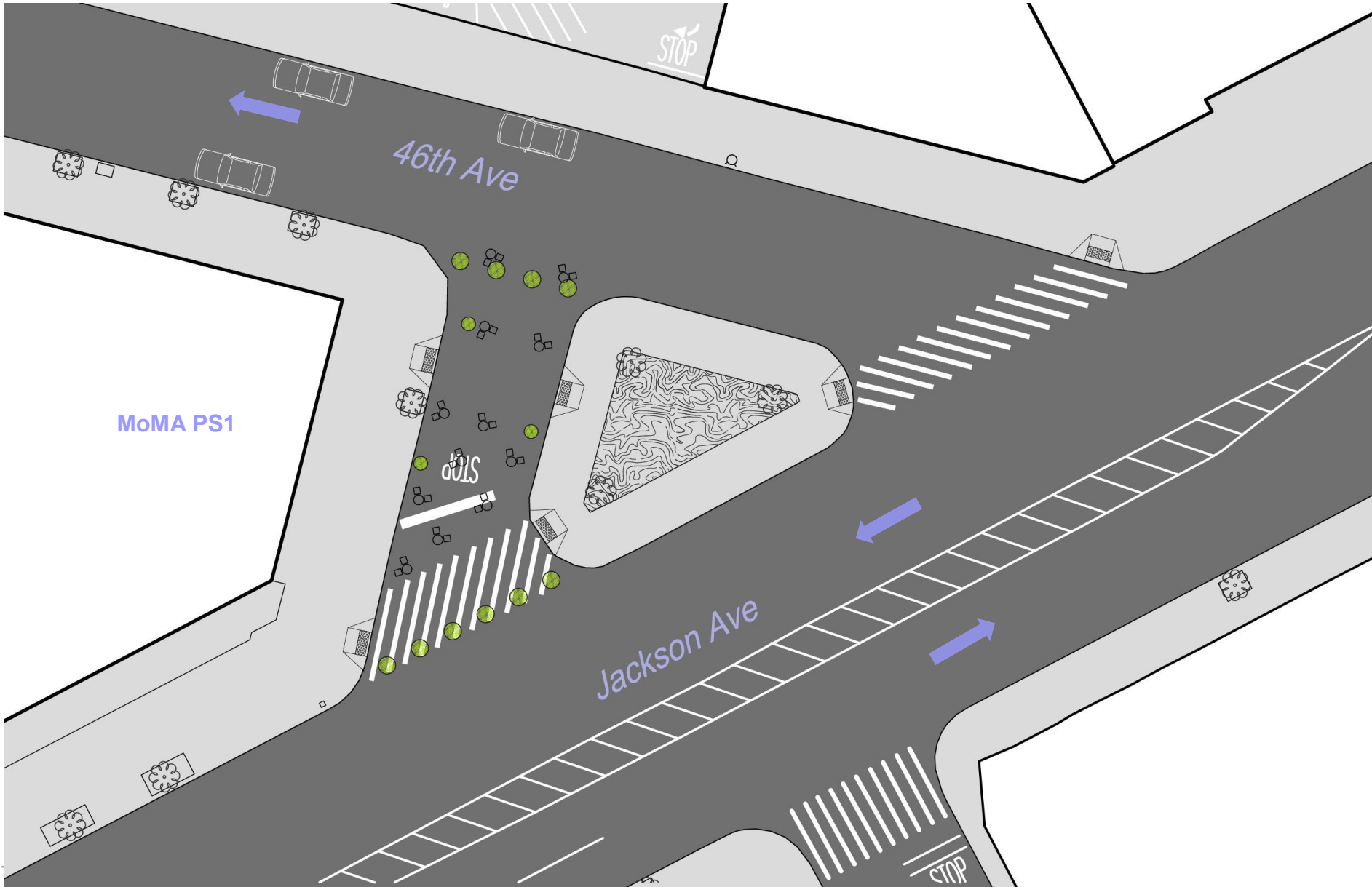


Have you visited the new pop-up plaza at 46th Ave and Jackson Ave?

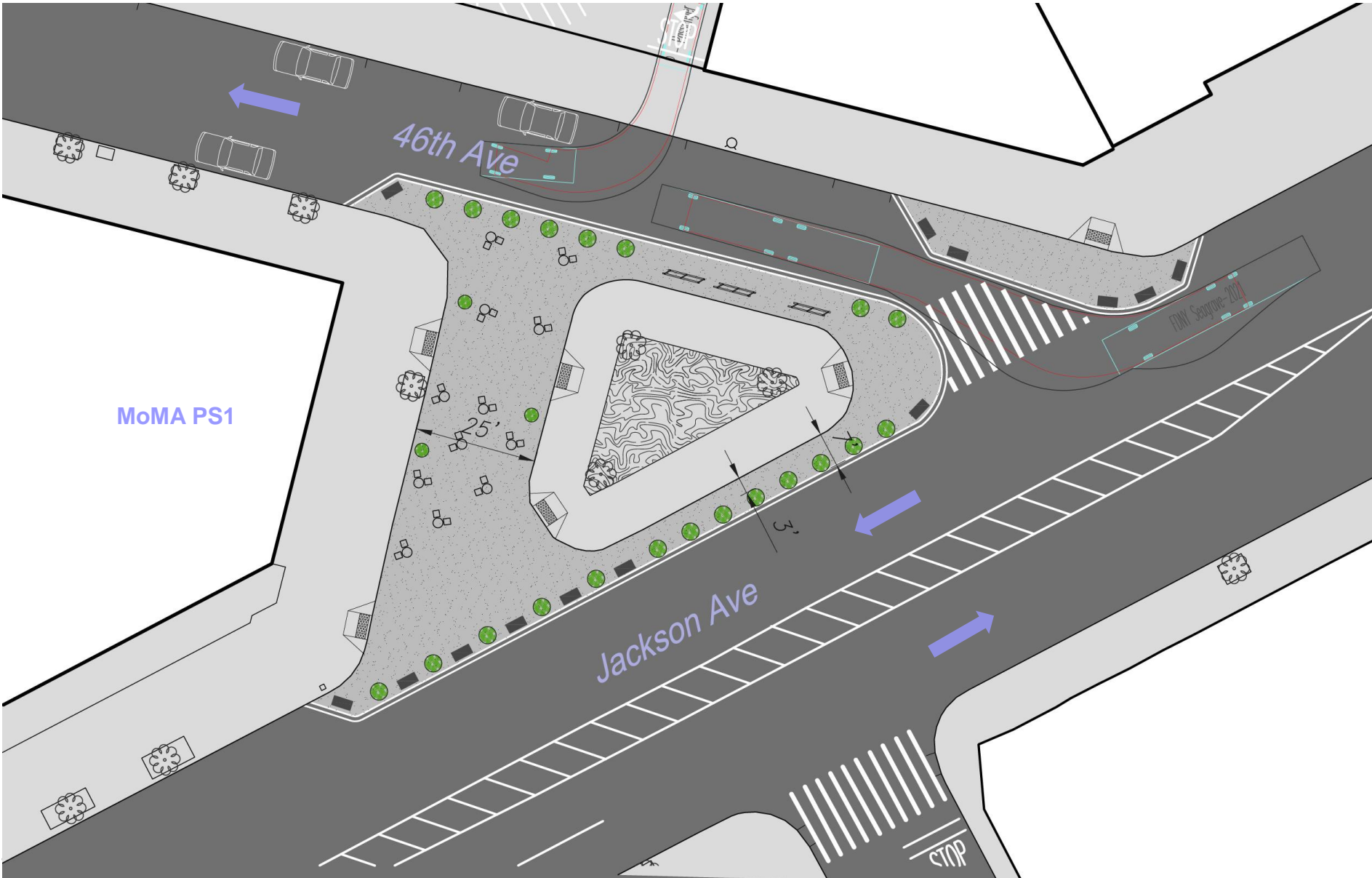


* Graphics show results from the online survey

CURRENT CONDITION



DESIGN PROPOSAL



DESIGN PROPOSAL

Bike Corral
18 new bike
parking spaces

Neck
Downs

MoMA PS1

Seating Area

Trash Bin

Granite Blocks

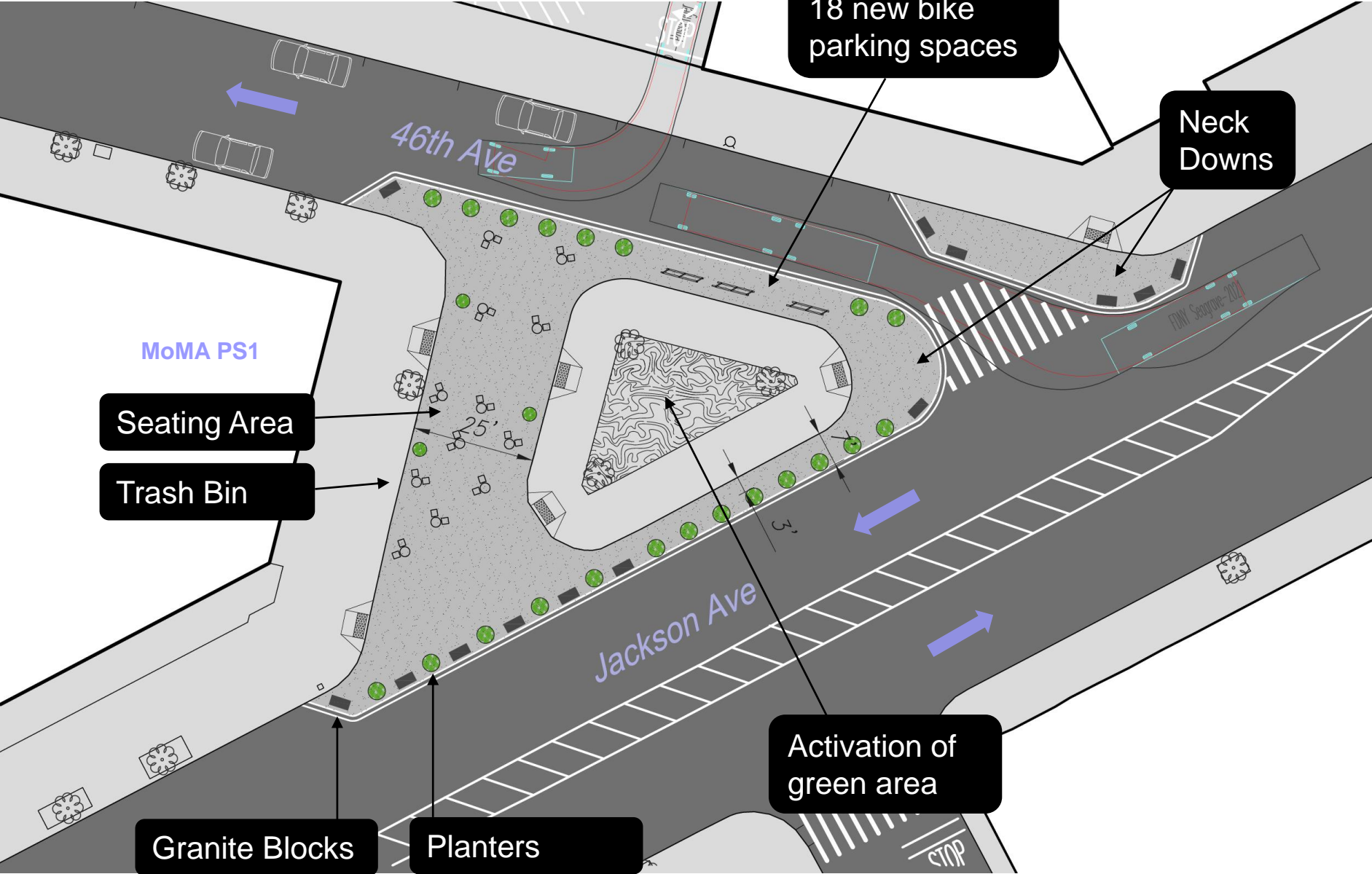
Planters

Activation of
green area

Jackson Ave

46th Ave

FNY Seaport-2014



PLAZA TOOLKIT



UMBRELLAS

PLANTERS

GRANITE
BLOCKS

MOVABLE
FURNITURE

FLEXIBLE
DELINEATORS

EPOXY
GRAVEL

DOT PLAZAS: JOHNNY HARTMAN (MN)



PLAZA RULES + SIGNAGE

- DOT created plaza rules, many of which are based on Parks code of conduct rules which allow the plaza to be managed as a public space.
- Rules signage is posted in all plazas.



NEXT STEPS

- Maintain the pop-up plaza in place through spring 2022
- NYCDOT will continue working with MoMA PS1 on a winter programming agenda and on public art ideas to activate the space
- NYCDOT will install the full plaza treatment in the spring 2022

Thank you!



NYC DOT



NYC DOT



nyc_dot



NYC DOT