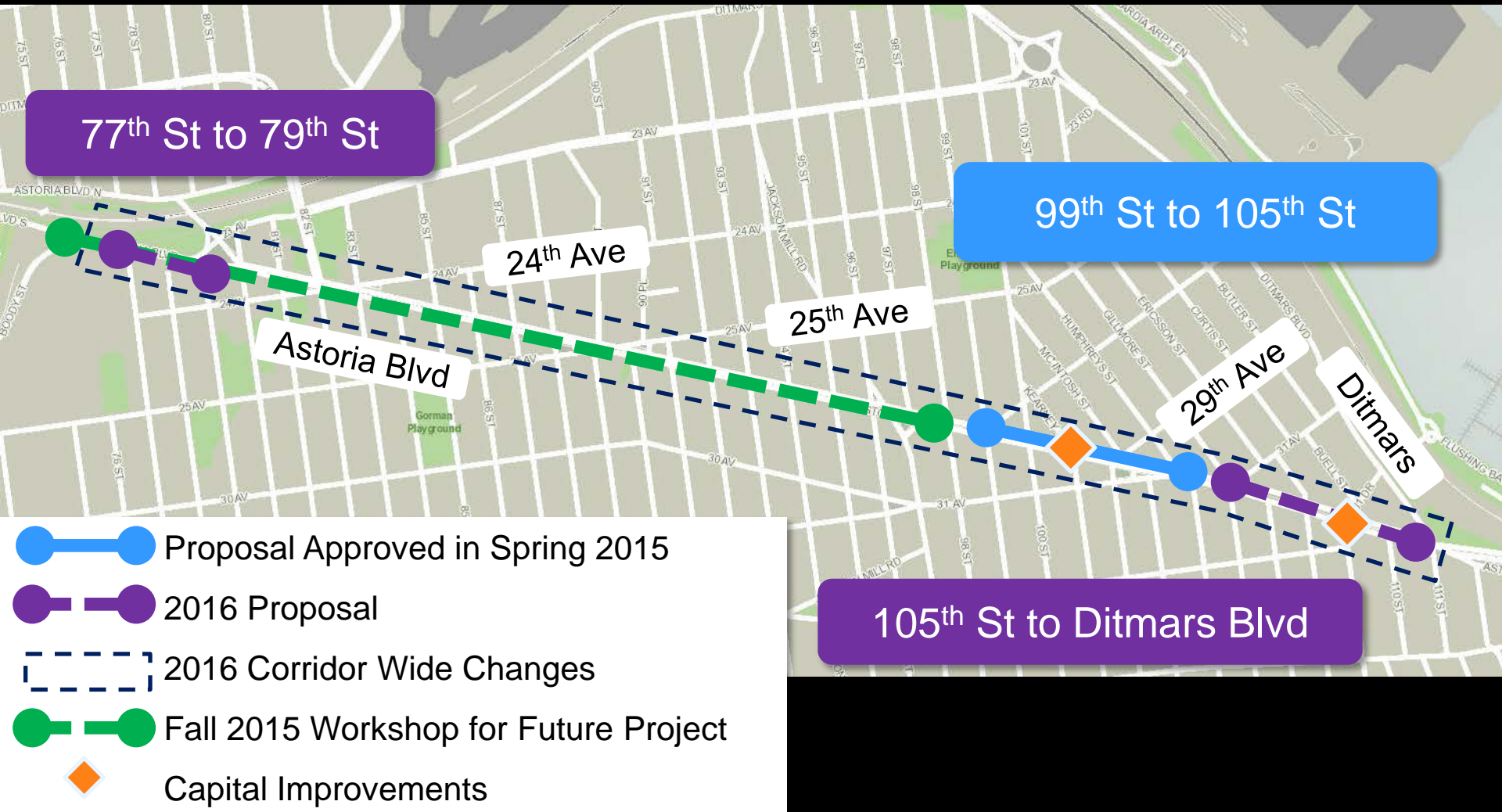


# Astoria Boulevard



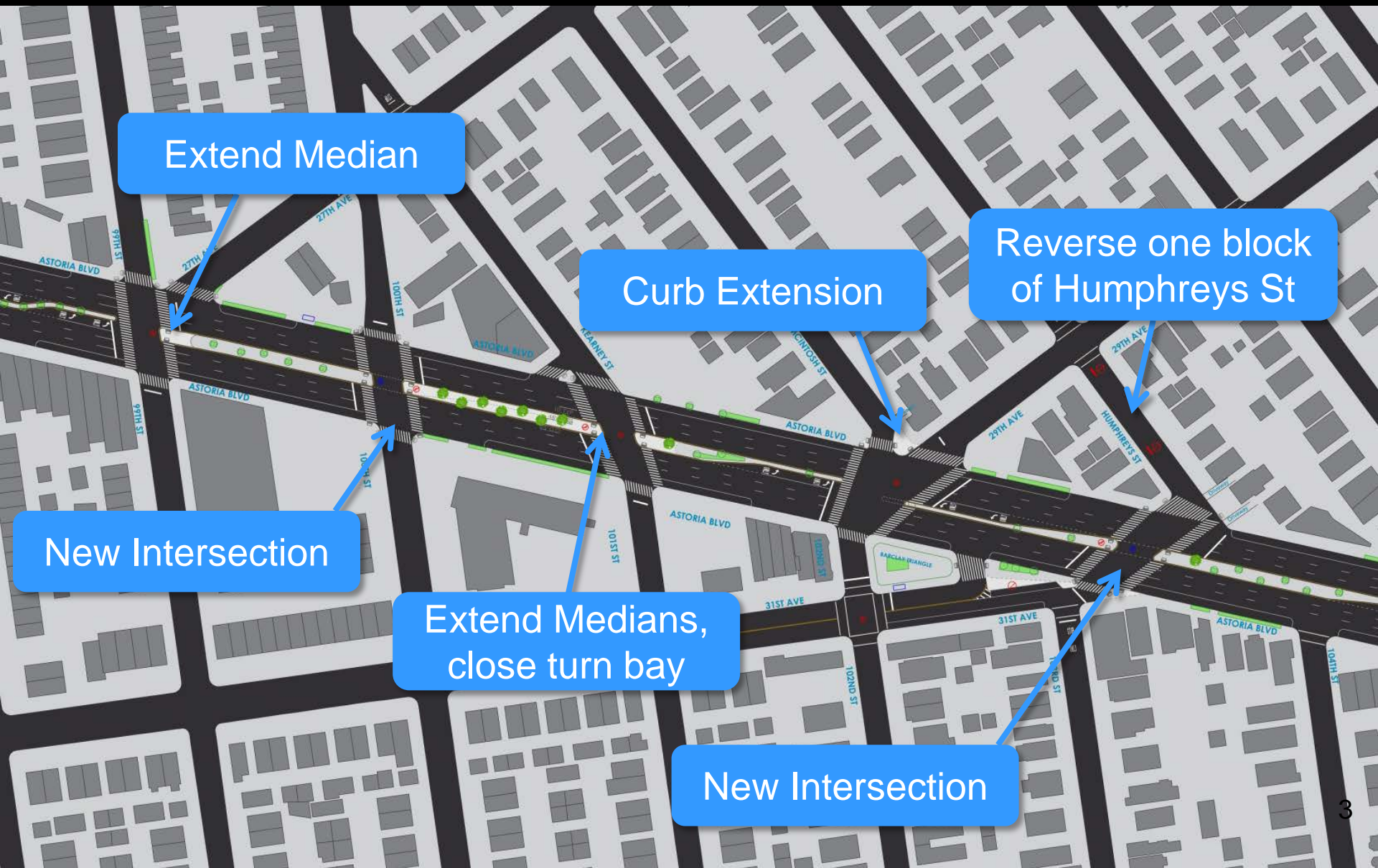
# Background

- Astoria Blvd is in a Vision Zero Priority Area
- 81<sup>st</sup> St, 82<sup>nd</sup> St, 90<sup>th</sup> St, and 108<sup>th</sup> St are Vision Zero Priority Corridors





# Proposal Approved in Spring 2015



Extend Median

Curb Extension

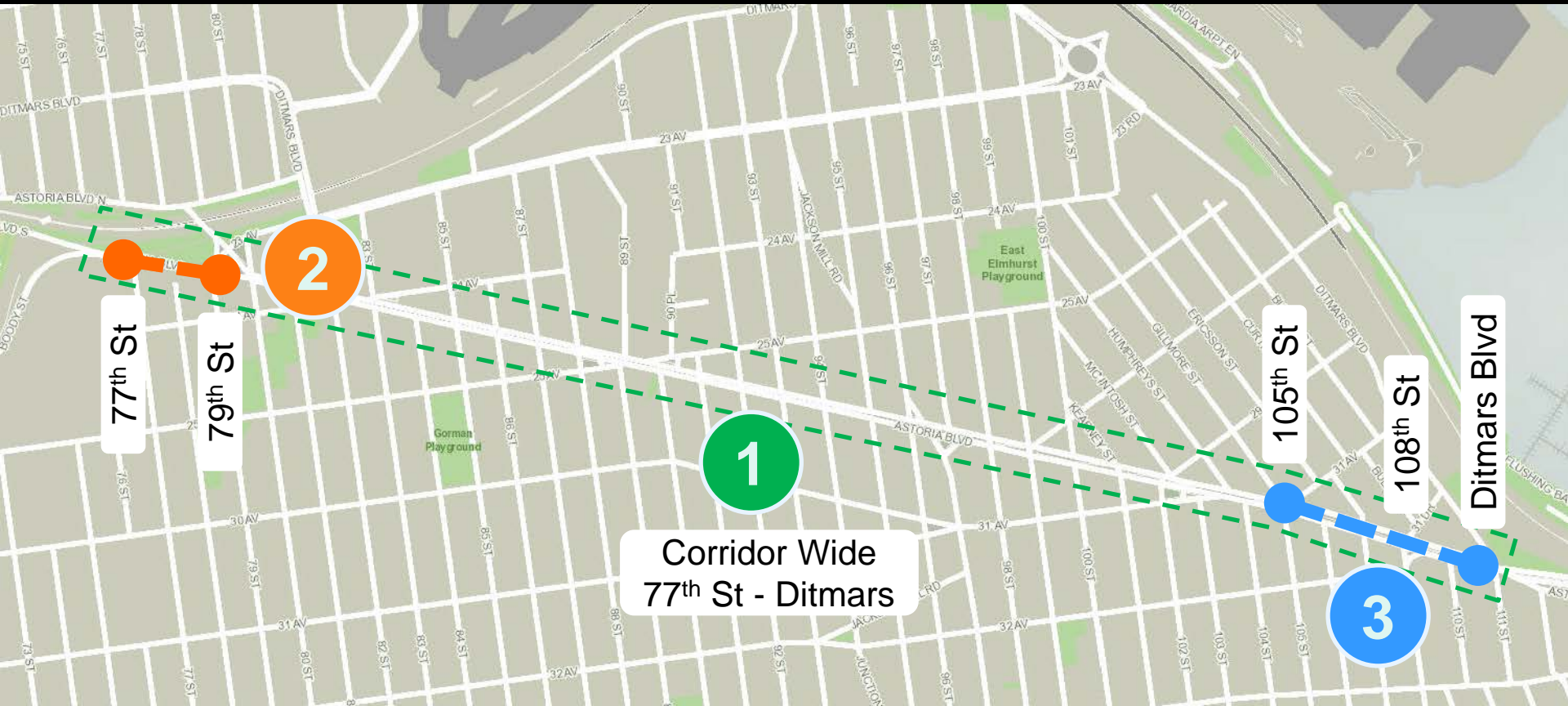
Reverse one block of  
Humphreys St

New Intersection

Extend Medians,  
close turn bay

New Intersection

# 2016 Proposal Area





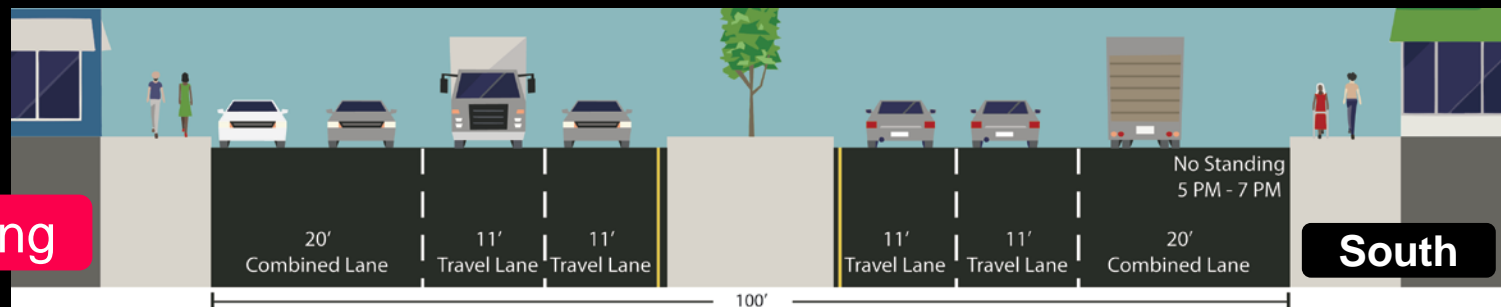
# 1 Corridor Wide Changes

Affects approximately  
150+ parking spots

Rush hour regulation not used due to  
loading vehicles, creates open highway feel

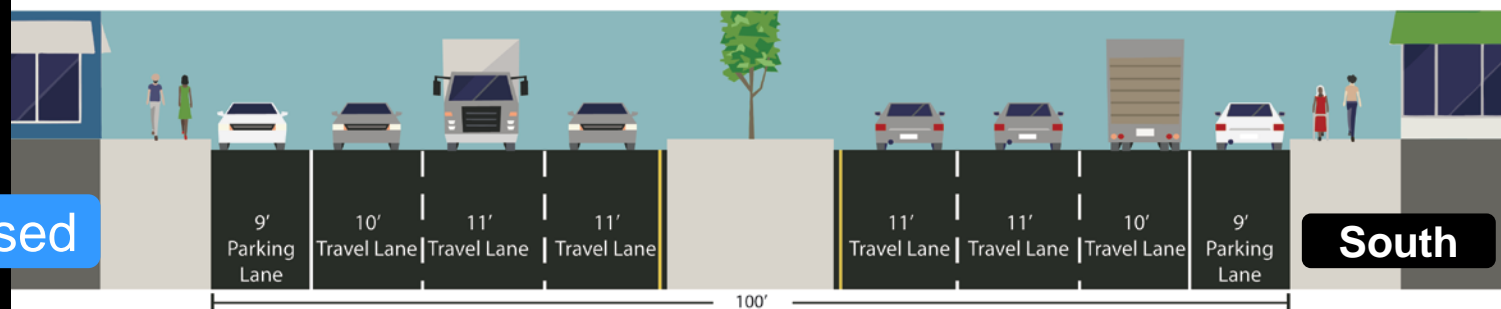
1. Remove rush hour regulation on south side of Astoria Blvd, allowing parking at all times except during Alternate Side Parking
2. Add parking lane line on north and south sides of Astoria Blvd

Existing



South

Proposed



South

79th St

Ditmars Blvd

2

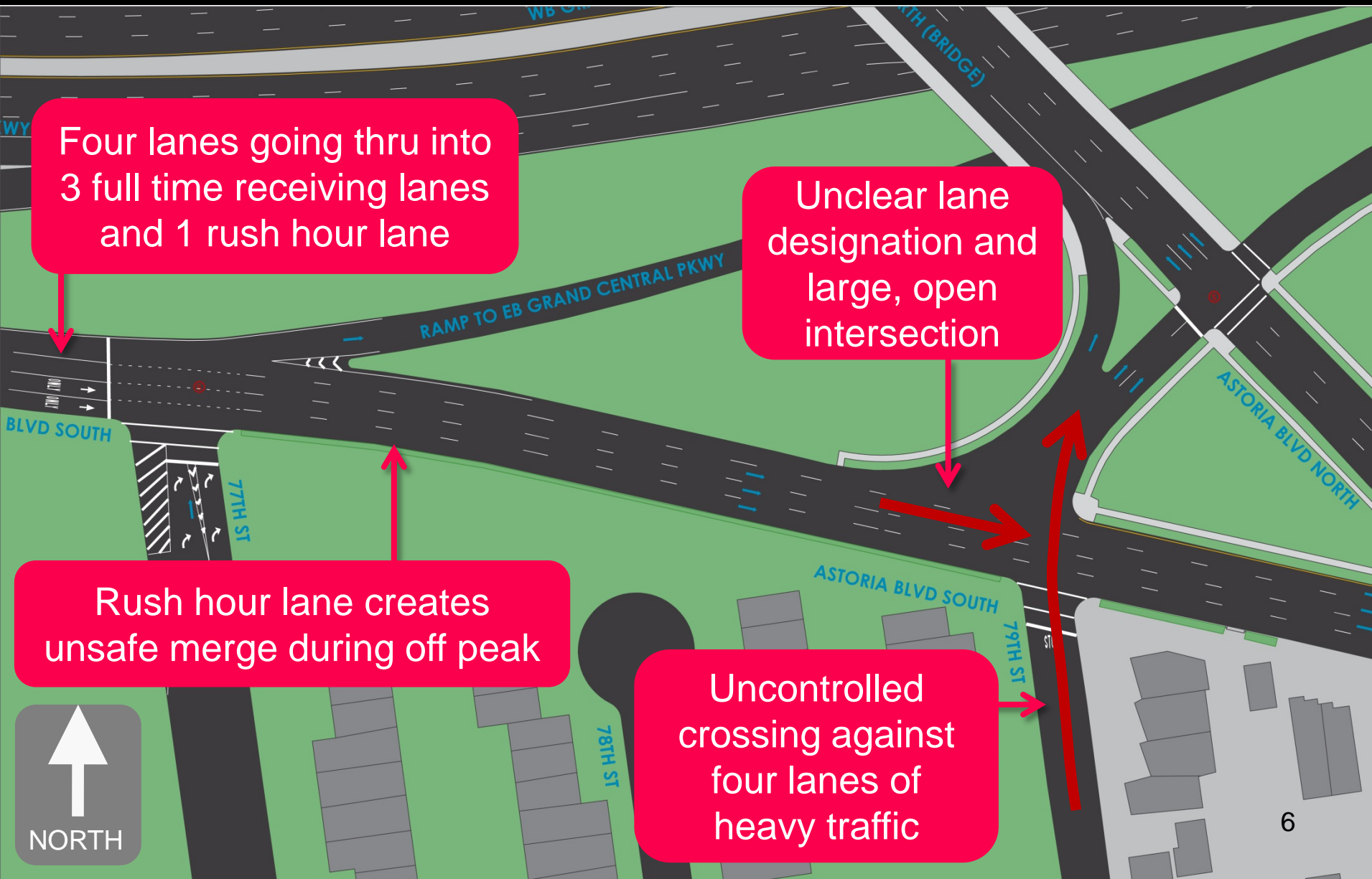
## Existing Conditions

Four lanes going thru into 3 full time receiving lanes and 1 rush hour lane

Unclear lane designation and large, open intersection

Rush hour lane creates unsafe merge during off peak

Uncontrolled crossing against four lanes of heavy traffic





## 2 Proposal – 77<sup>th</sup> to 79<sup>th</sup> St

Formalize NSA on south side of curb

Signal at 79<sup>th</sup> St under study

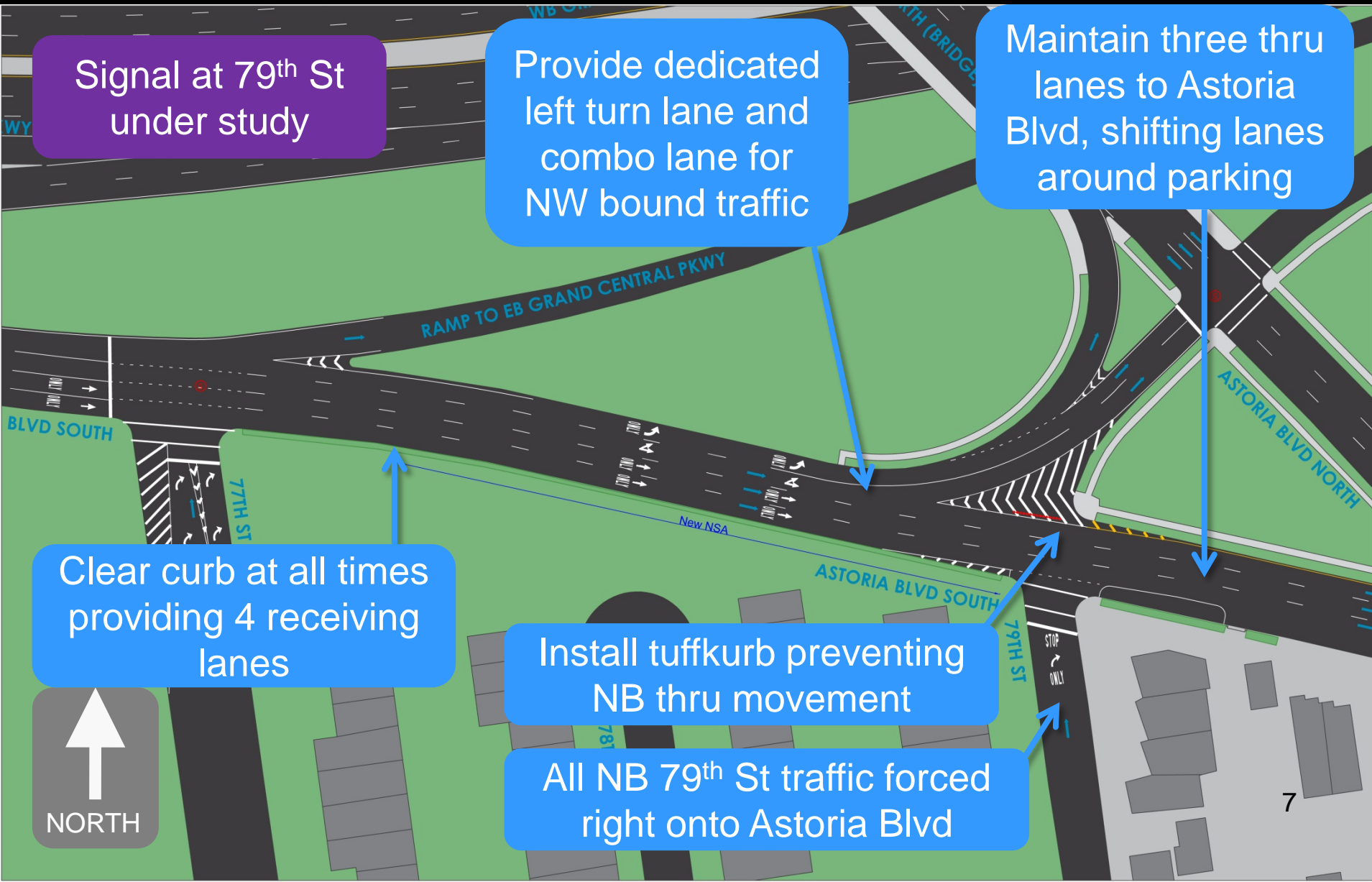
Provide dedicated left turn lane and combo lane for NW bound traffic

Maintain three thru lanes to Astoria Blvd, shifting lanes around parking

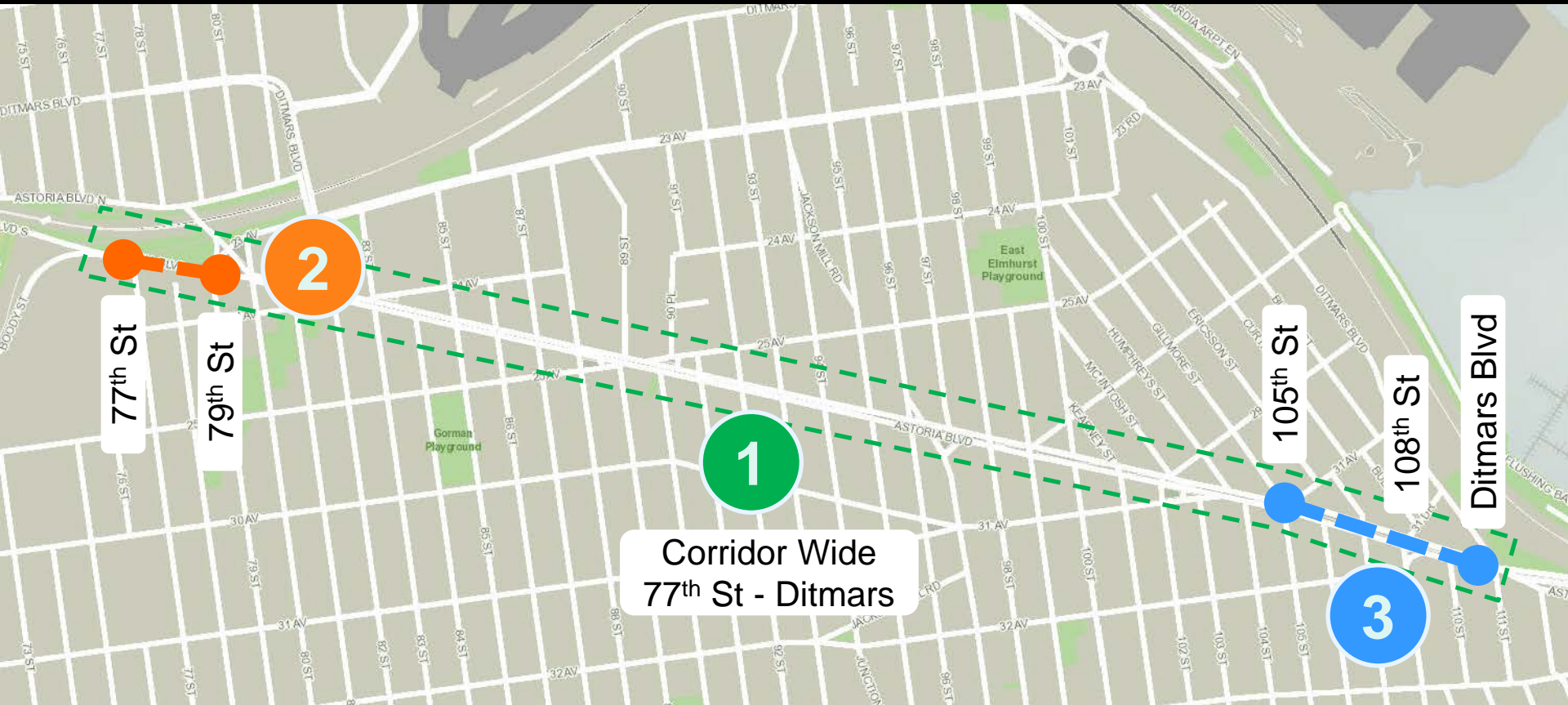
Clear curb at all times providing 4 receiving lanes

Install tuffkurb preventing NB thru movement

All NB 79<sup>th</sup> St traffic forced right onto Astoria Blvd



# 2016 Project Area





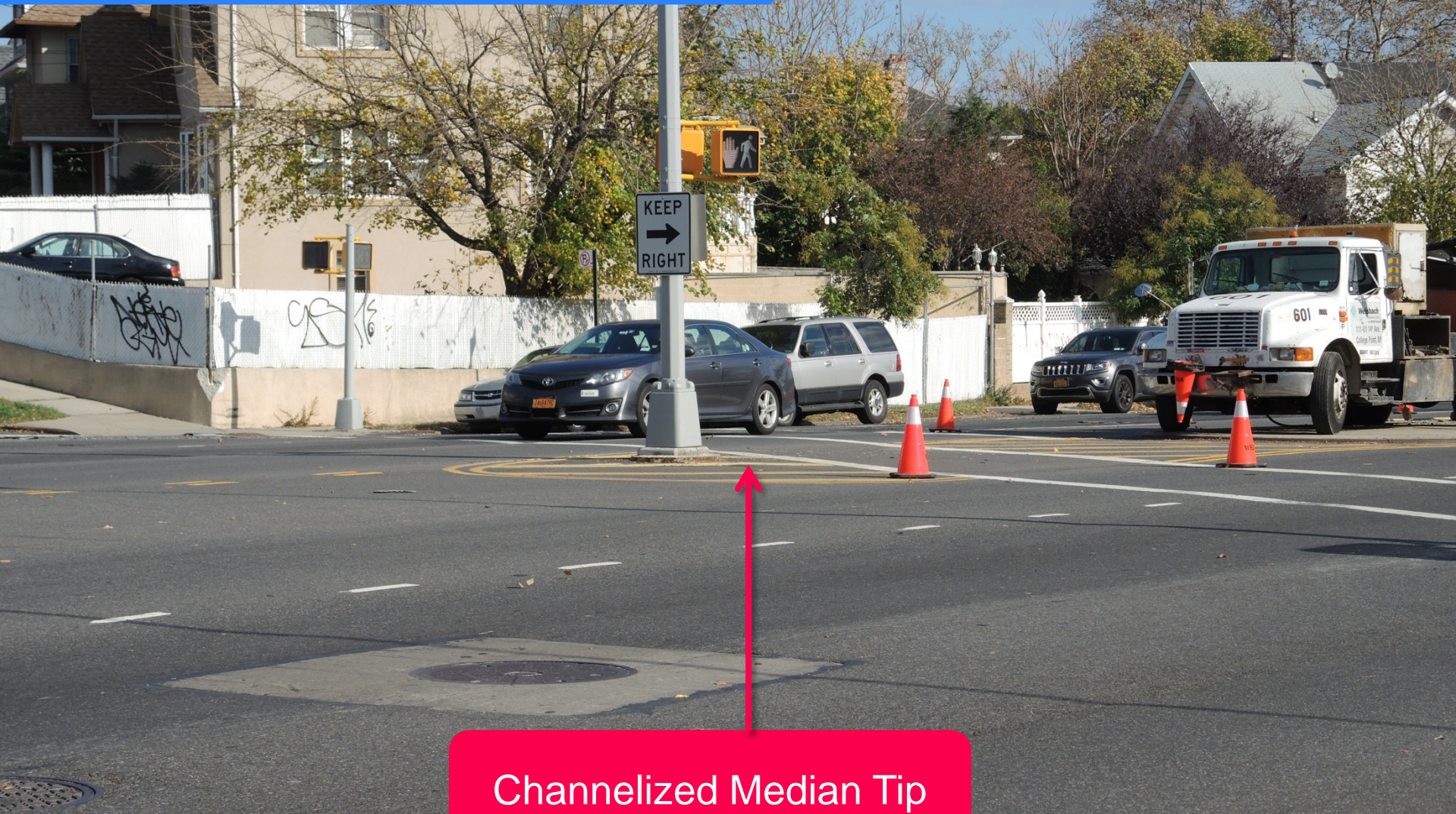
# Project Area – 105<sup>th</sup> St to Ditmars Blvd

3





# Astoria Blvd and 105<sup>th</sup> St



Channelized Median Tip

Existing conditions  
looking Northeast



# Astoria Blvd and 105<sup>th</sup> St

Sub-standard cut-thru  
and angled crosswalk

Existing conditions  
looking North





# Astoria Blvd and 105<sup>th</sup> St

Upgrade Crosswalks  
to Hi-Visibility

Existing

Angled crosswalk and  
sub-standard median

Channelized  
median tip

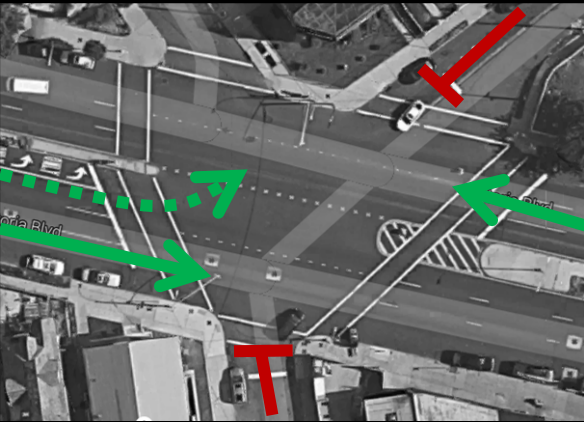
Proposed

Build out median  
in concrete

Straighten  
crosswalk and  
close cut-thru



# Astoria Blvd and 105<sup>th</sup> St

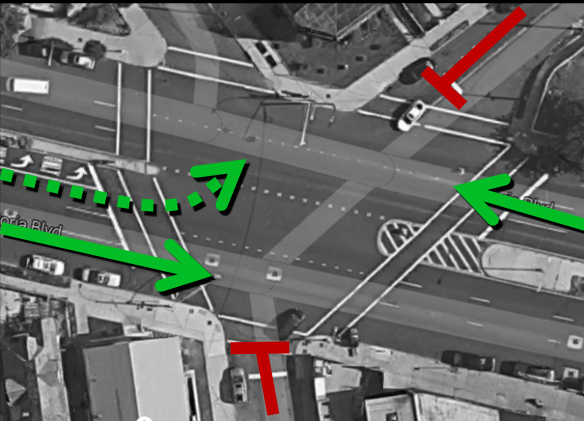


Existing

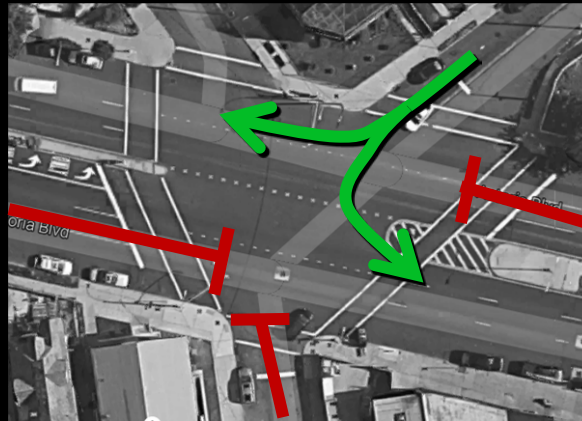


North/South goes at same time

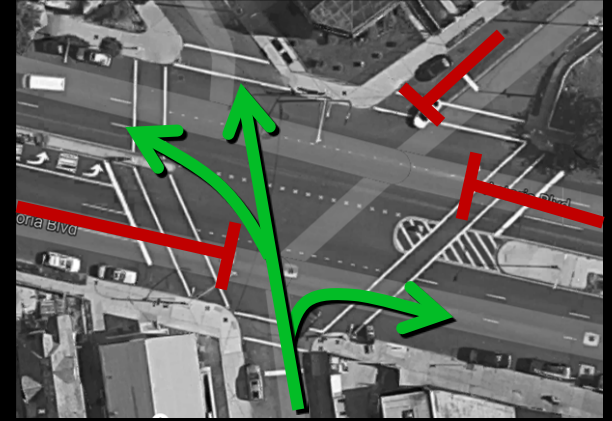
- Create three phase signal to separate north/south movements and reduce vehicular conflicts



Proposed



Southbound Phase



Northbound Phase



# Astoria and 108<sup>th</sup> St



- No left turn bay
- Left turning drivers forced to Ditmars Blvd where signage is unclear
- Community requested improved access to East Elmhurst for eastbound drivers

Existing conditions  
looking west

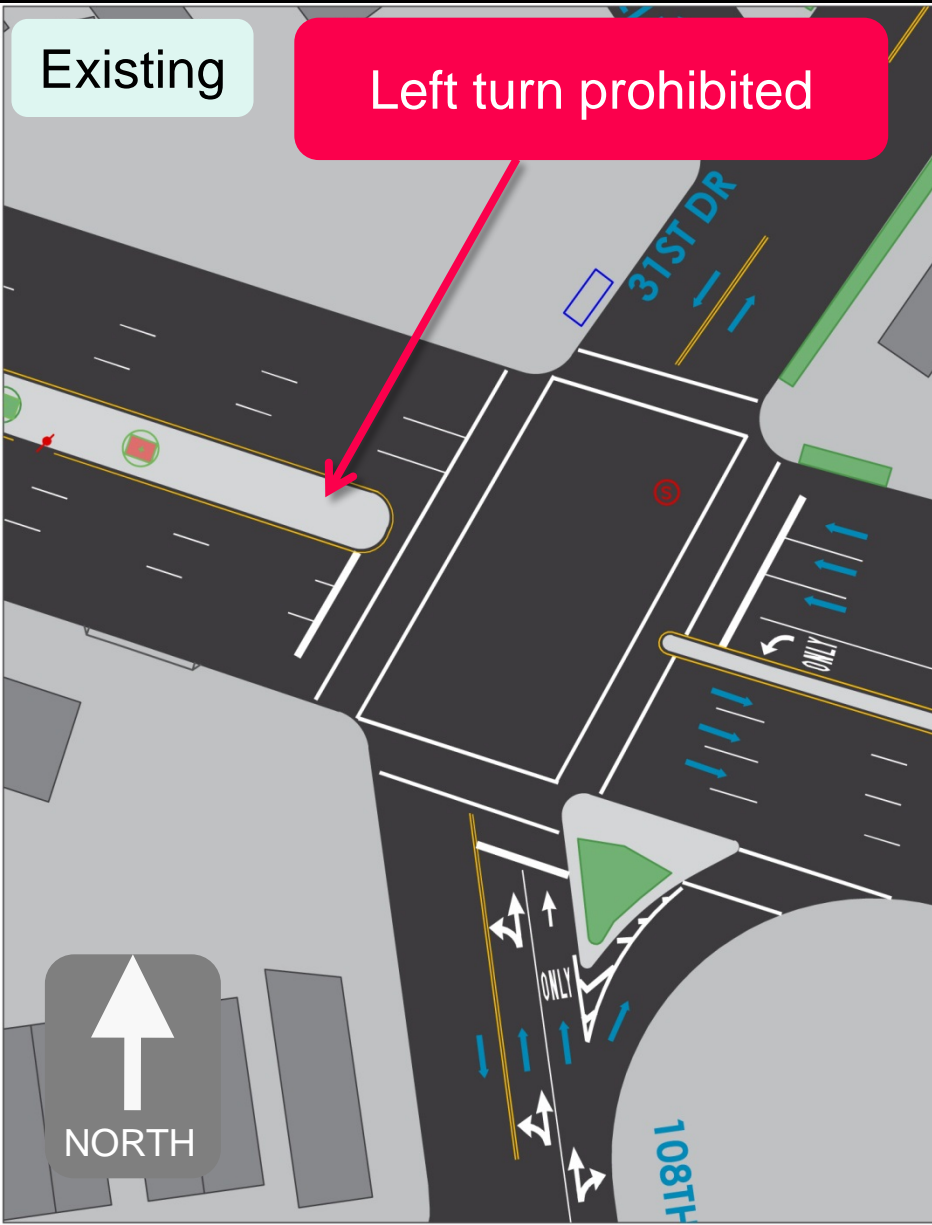


# Astoria Blvd and 108<sup>th</sup> St

Upgrade Crosswalks  
to Hi-Visibility

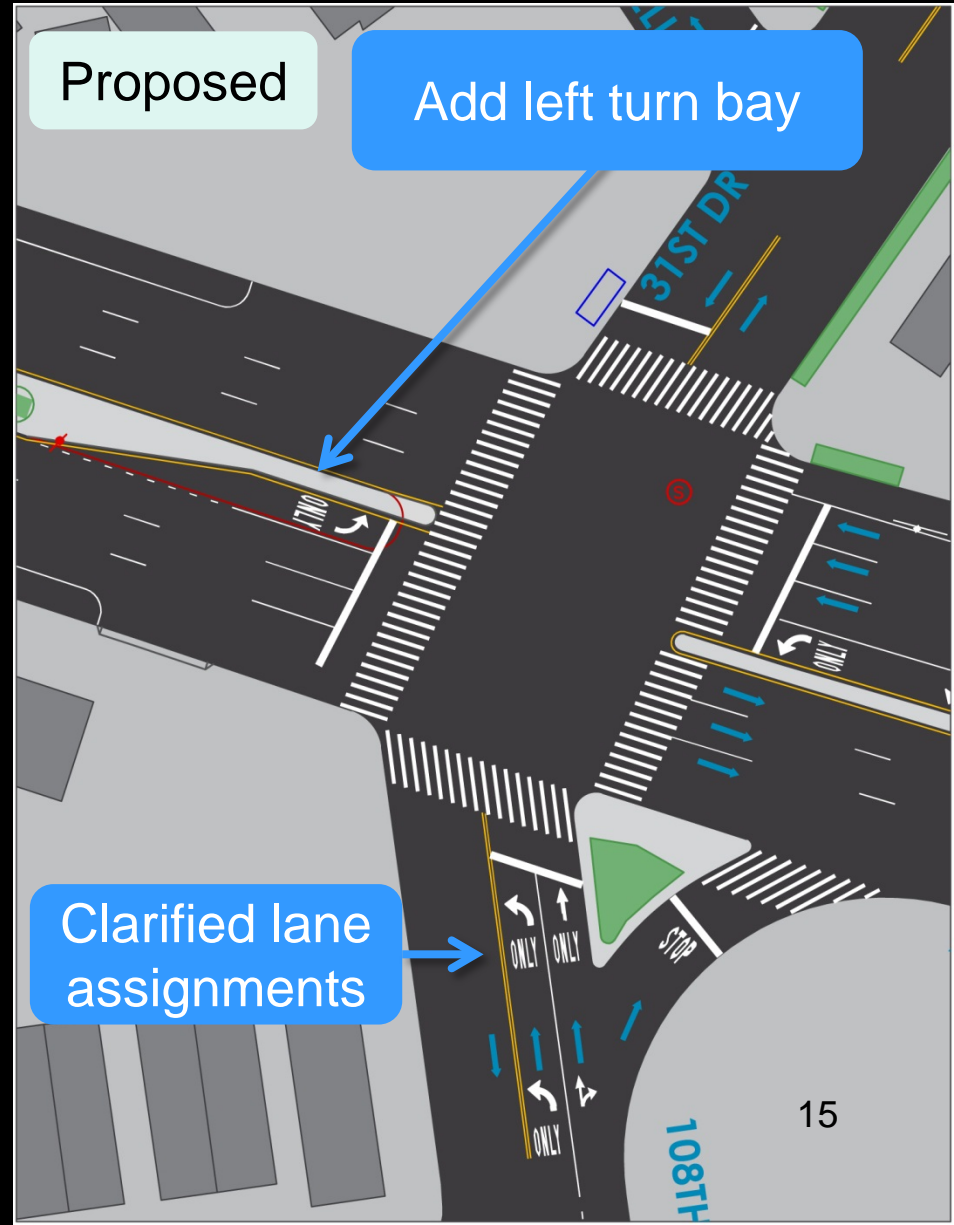
Existing

Left turn prohibited



Proposed

Add left turn bay



Clarified lane  
assignments



# Astoria Blvd and Ditmars Blvd

Long Crossing

110'

Angled geometry  
allows for high  
speed turns

Existing conditions  
looking north



# Existing Conditions at Ditmars Blvd

Triangle does not sufficiently accommodate pedestrians

Angled geometry creates long crosswalk

Low volume, permitted left turn but no turn bay and unclear signage

111<sup>th</sup> St misaligned with Ditmars Blvd

110'





# Proposal – Ditmars Blvd

Upgrade Crosswalks  
to Hi-Visibility

Expand triangle

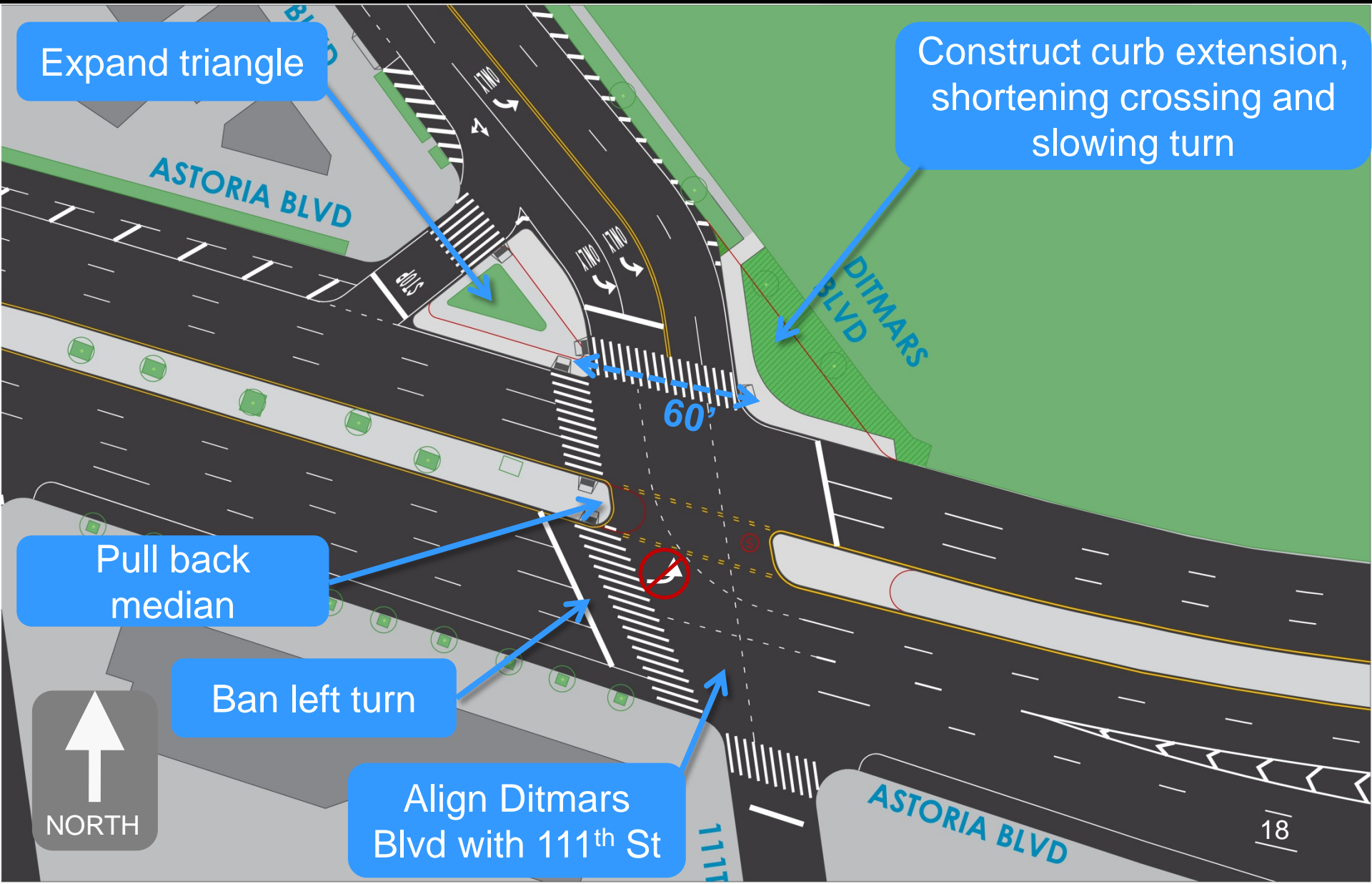
Construct curb extension,  
shortening crossing and  
slowing turn

Pull back  
median

Ban left turn

Align Ditmars  
Blvd with 111<sup>th</sup> St

60'



# Summary

## Astoria Blvd - 79<sup>th</sup> St to Ditmars Blvd

1. Remove rush hour regulation on south side, allowing parking at all times
2. Add parking lane line on north and south sides of Astoria Blvd

## 77<sup>th</sup> St

1. Remove parking along Astoria Blvd between 77<sup>th</sup> St and 79<sup>th</sup> St
2. Create dedicated left turn northbound lane and combo lane at 79<sup>th</sup> St
3. Ban northbound 79<sup>th</sup> St thru movement

## 105<sup>th</sup> St

1. Create three phase signal
2. Extend east median tip and realign west crosswalk

## 108<sup>th</sup> St

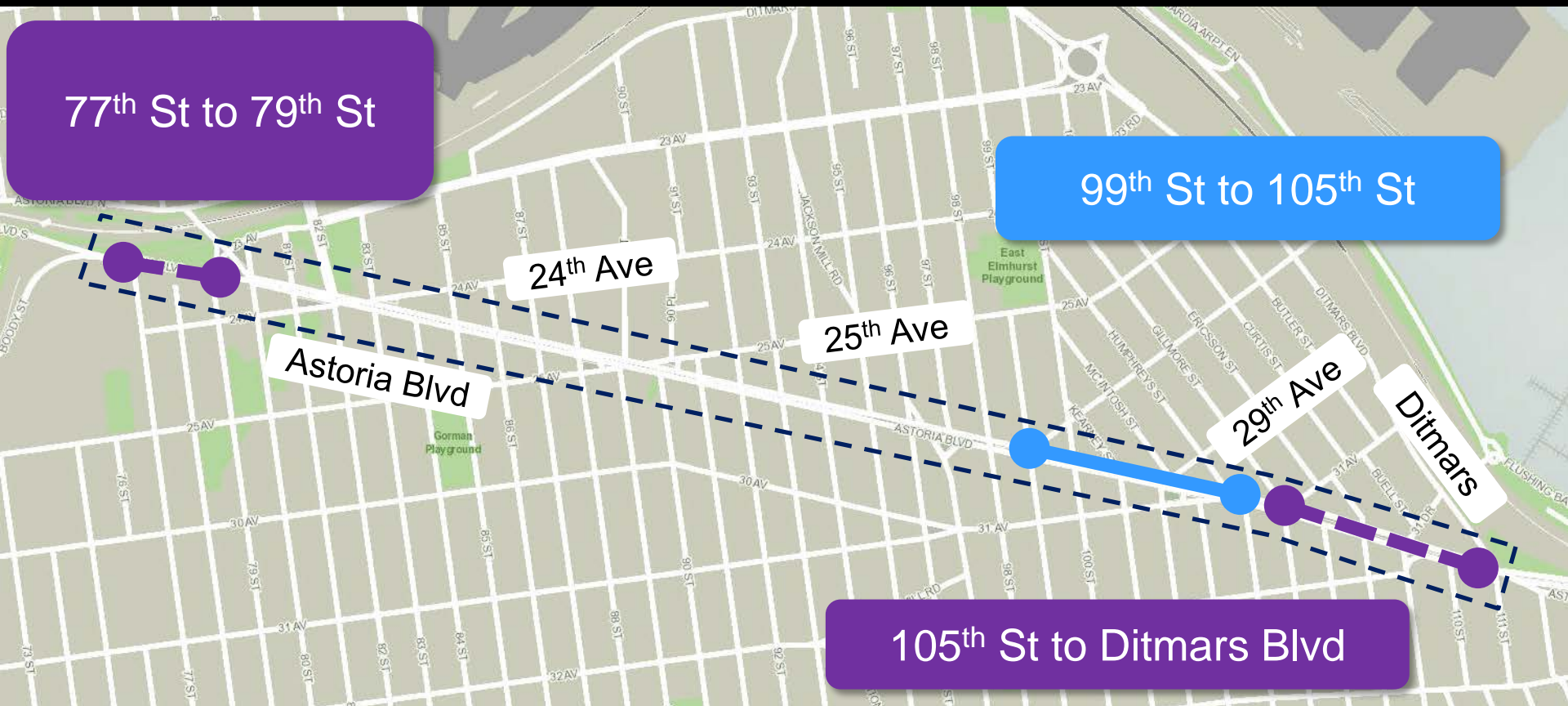
1. Add left turn bay for eastbound Astoria Blvd

## Ditmars Blvd

1. Expand northwest triangle
2. Pull back west median and ban eastbound left turn
3. Construct curb extension on northeast corner
4. Extend eastern median



# 2016 Implementation



77<sup>th</sup> St to 79<sup>th</sup> St

99<sup>th</sup> St to 105<sup>th</sup> St

Astoria Blvd

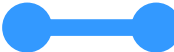


24<sup>th</sup> Ave

25<sup>th</sup> Ave

29<sup>th</sup> Ave

Ditmars

105<sup>th</sup> St to Ditmars Blvd

-  Proposal Approved in Spring 2015
-  2016 Proposal
-  2016 Corridor Wide Changes

## Community Workshops

December 2<sup>nd</sup>, 2015  
workshop hosted by  
Councilmember  
Constantinides

April 16<sup>th</sup>, 2015 workshop  
hosted by Councilmember  
Ferrerias-Copeland

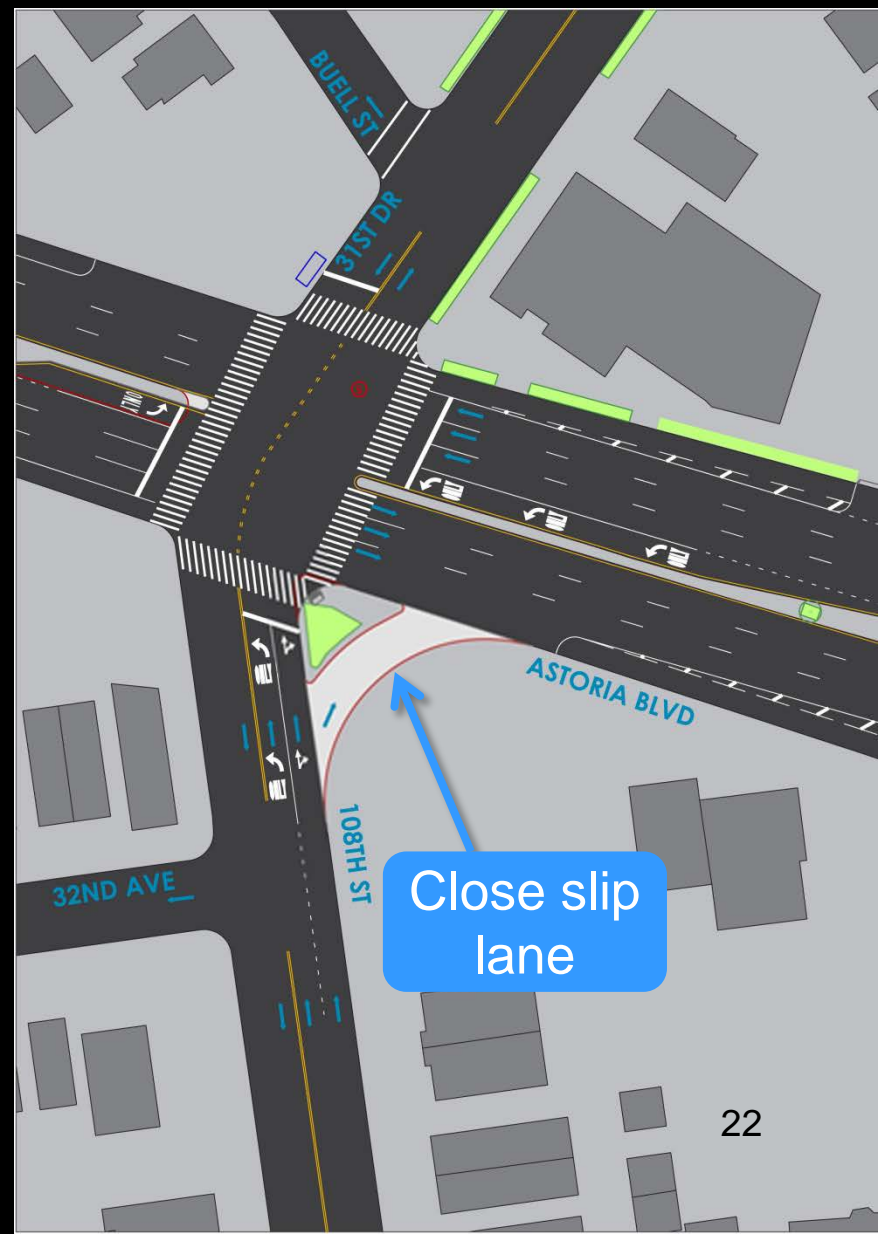
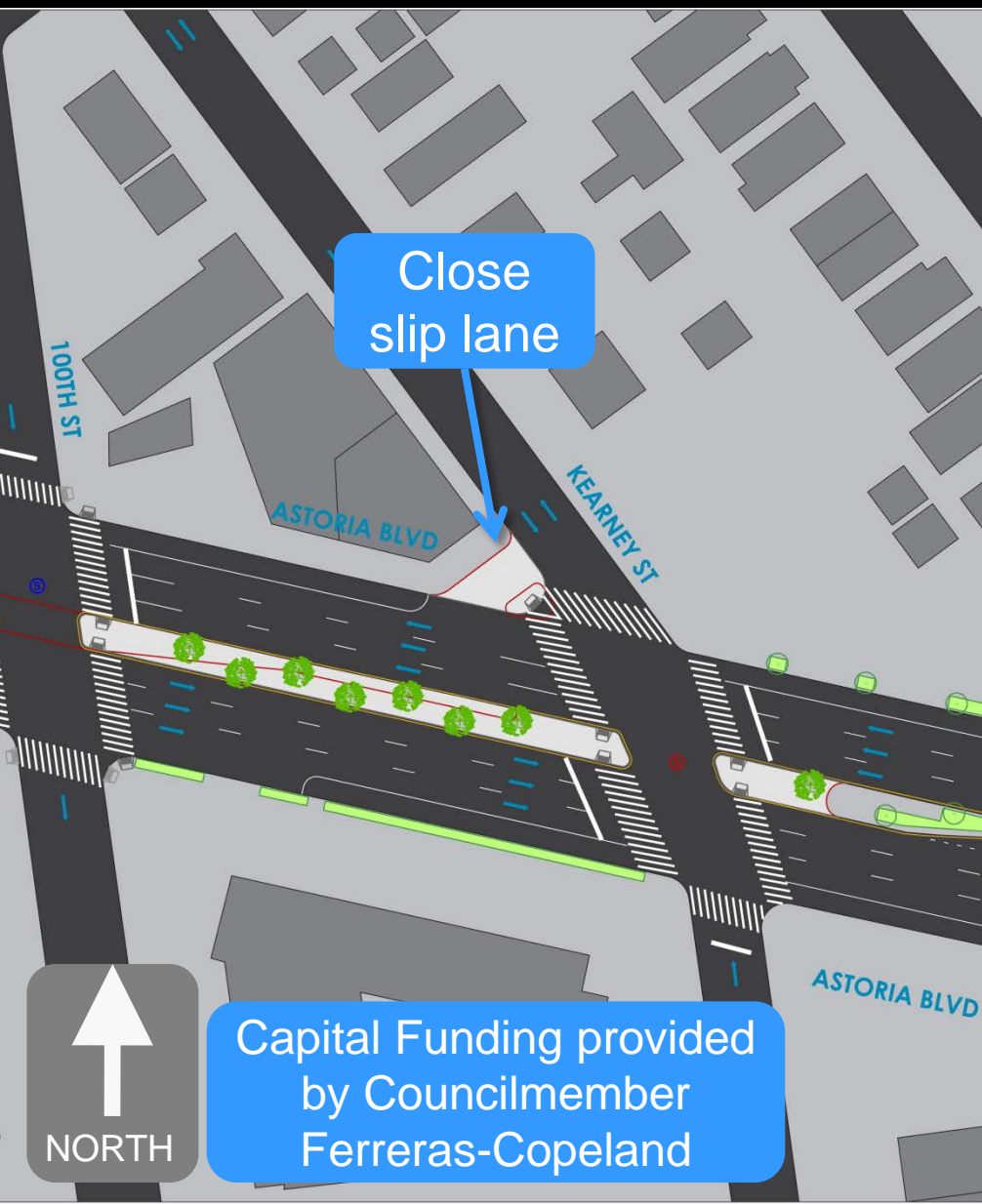
Developed proposals using  
\$800,000 allocated by  
Councilmember Ferreras-Copeland  
for capital improvements

Identifying concerns and developing proposals following workshop hosted by Councilmember Constantinides





# Funded Capital Improvements







[www.nyc.gov/dot](http://www.nyc.gov/dot)

**Thank  
You**