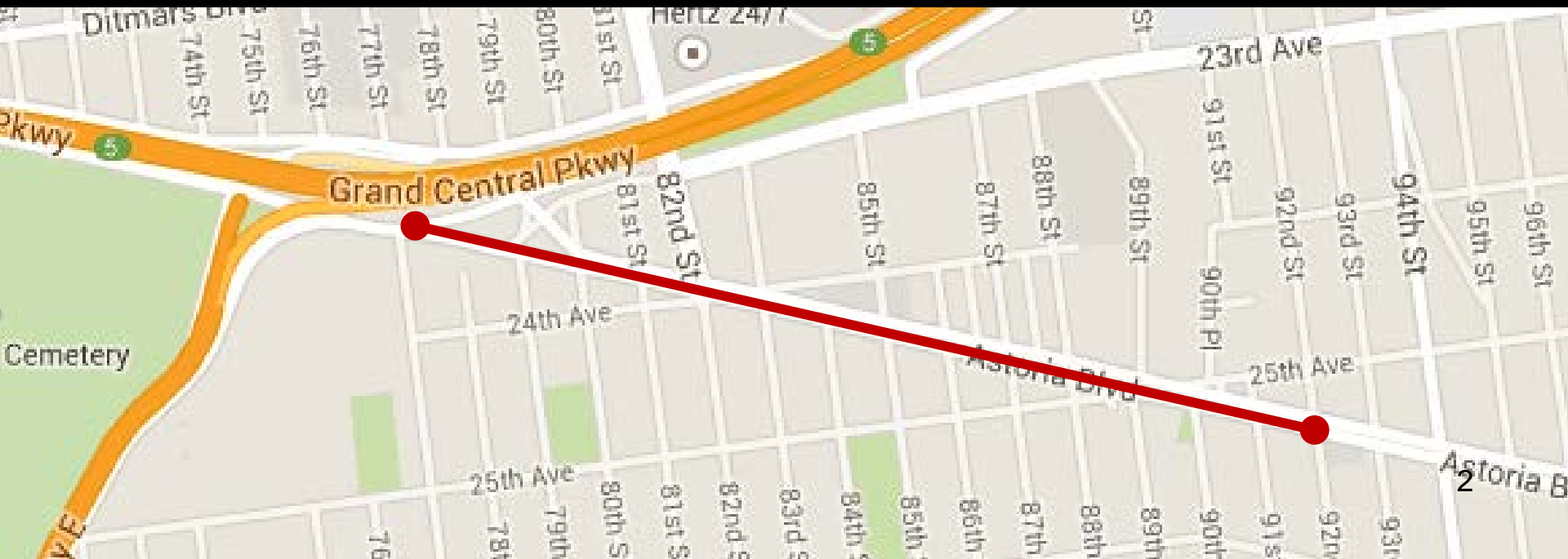


Astoria Boulevard Visioning



Background

- Request for safety improvements along Astoria Blvd from CM Constantinides and AM DenDekker
- 2011 DOT study found that lane reduction along corridor is not feasible due to high traffic volumes
- Recent study found over 60% of vehicles were speeding
- CM Ferreras-Copeland held workshop in April 2015 focusing on the eastern section of Astoria Blvd
- Capital and in-house work is planned to address concerns raised in April workshop



Safety Data



Astoria Blvd is a
Vision Zero Priority Area

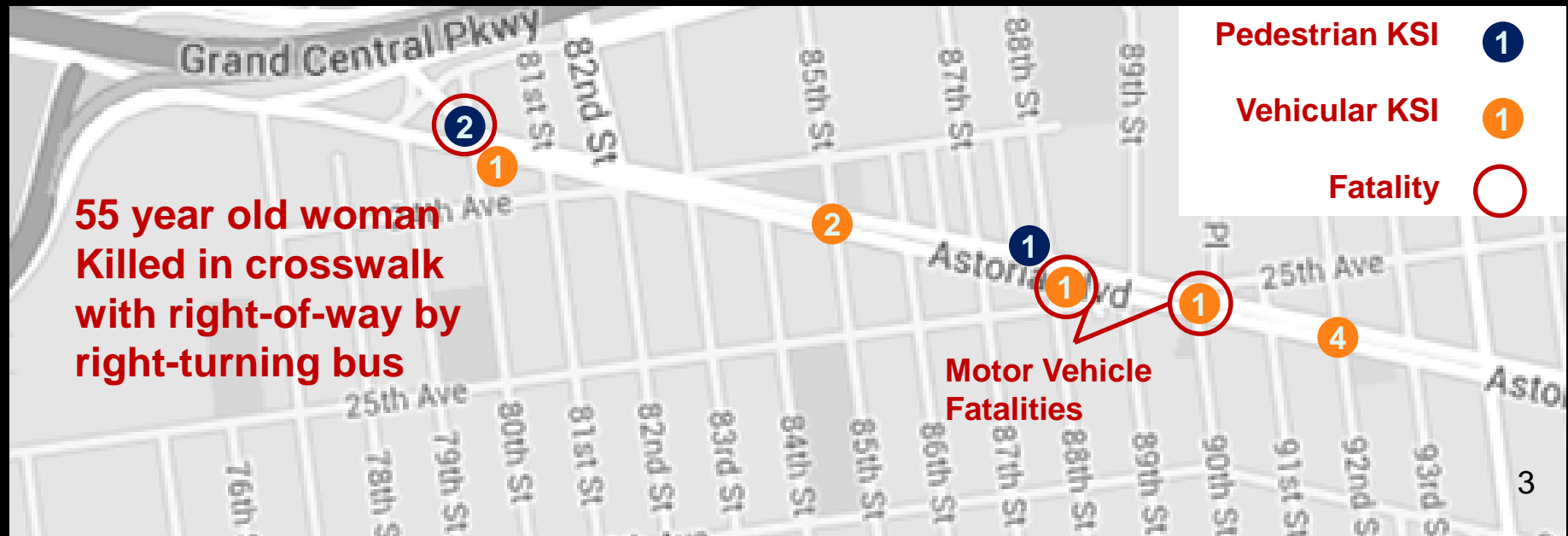
Astoria Blvd - 77th St to 92nd St, QN

Injury Summary, 2010-2014 (5 Years)

	Total Injuries	Severe Injuries	Fatalities	KSI
Pedestrian	21	1	1	2
Bicyclist	9	0	0	0
Motor Vehicle Occupant	163	7	2	9
Total	193	8	3	11

Fatalities, 01/01/2010-11/23/2015 : 4

Source: Fatalities: NYCDOT
Injuries: NYSDOT
KSI: Persons Killed or
Severely Injured



Street Grid

Irregular, multi-legged intersections where Astoria Blvd runs diagonal to the street grid

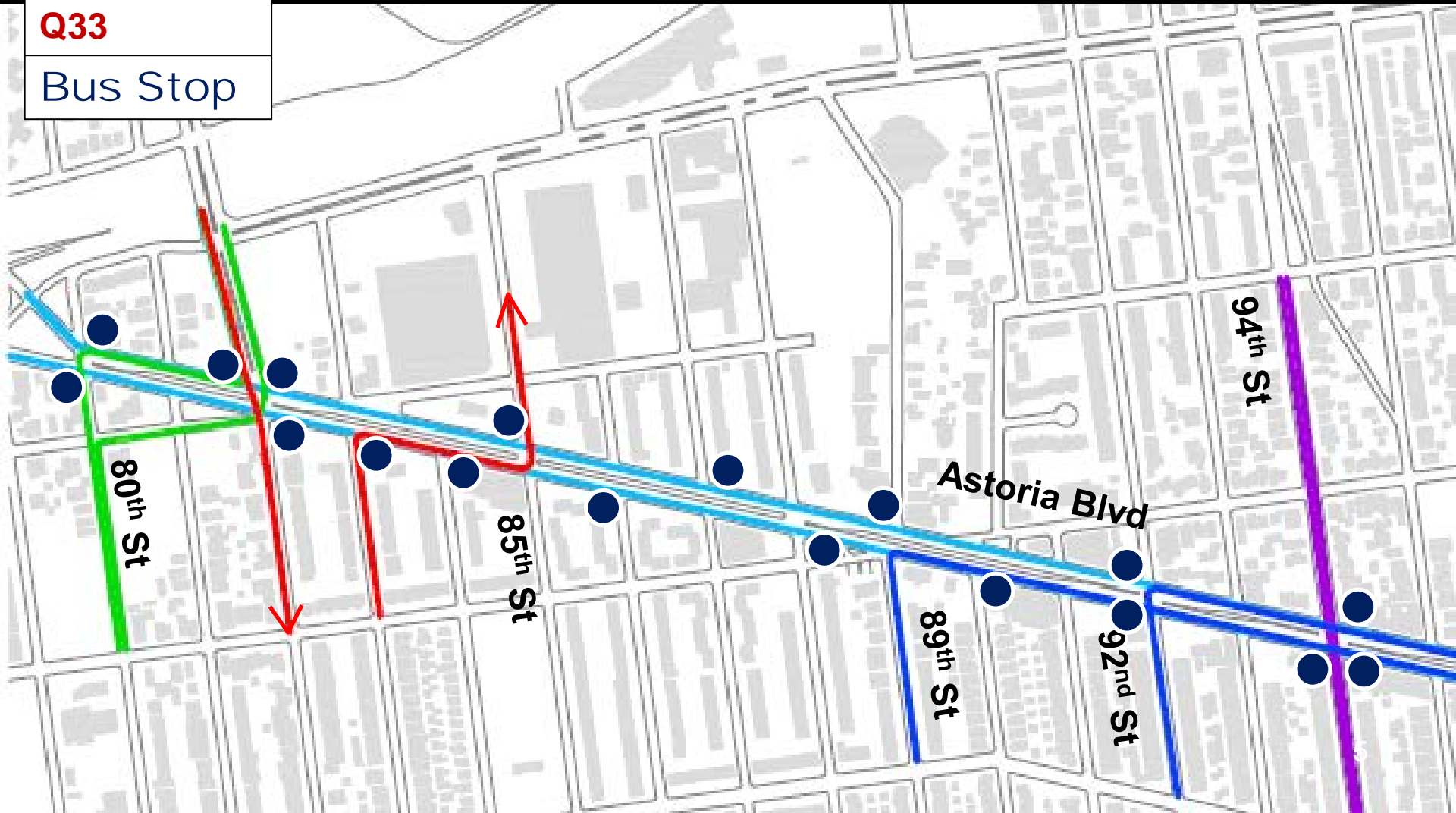


Bus Network

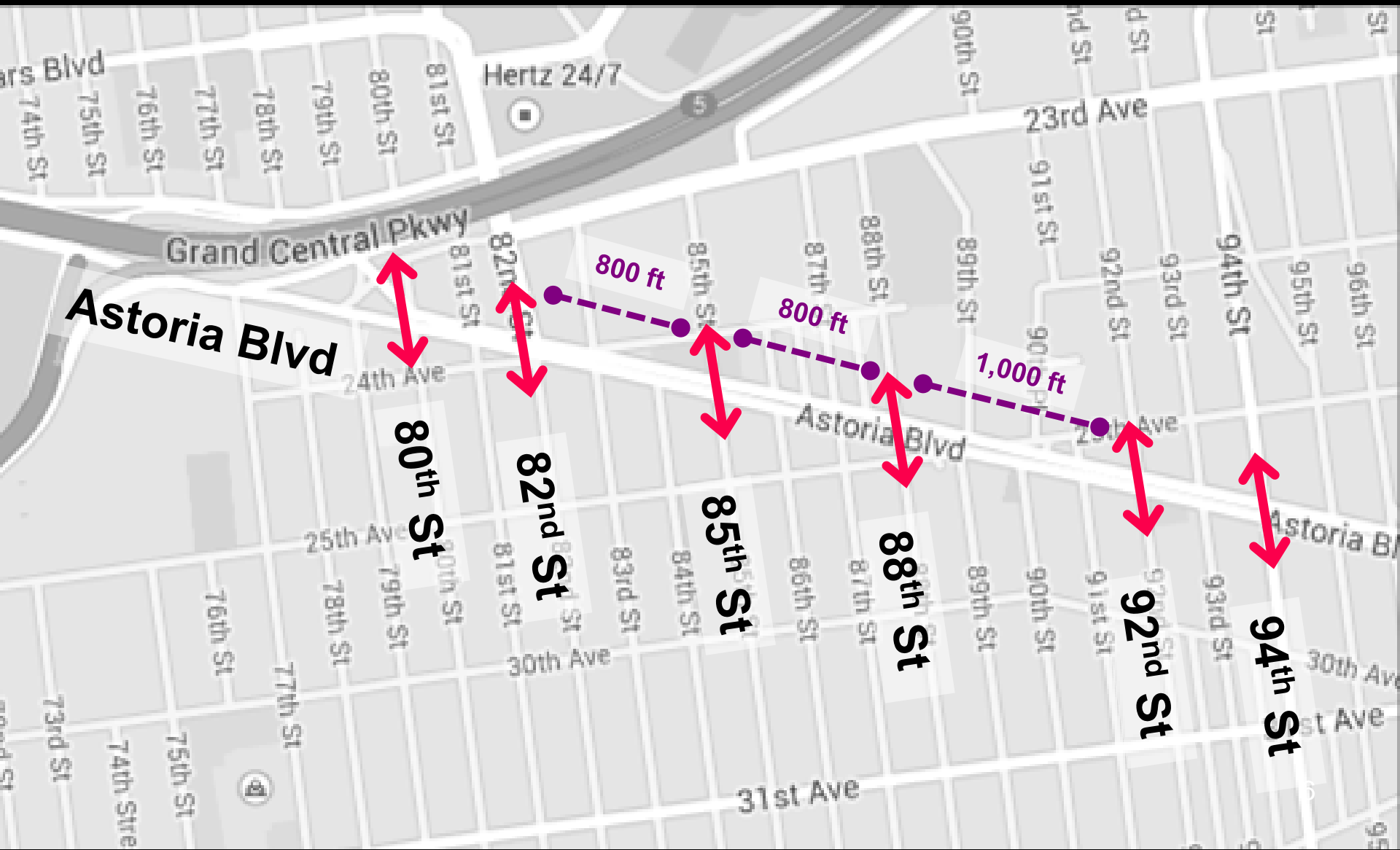
Bus heavy corridor with
lack of crossings

Q47 Q49
Q19 Q72
Q33

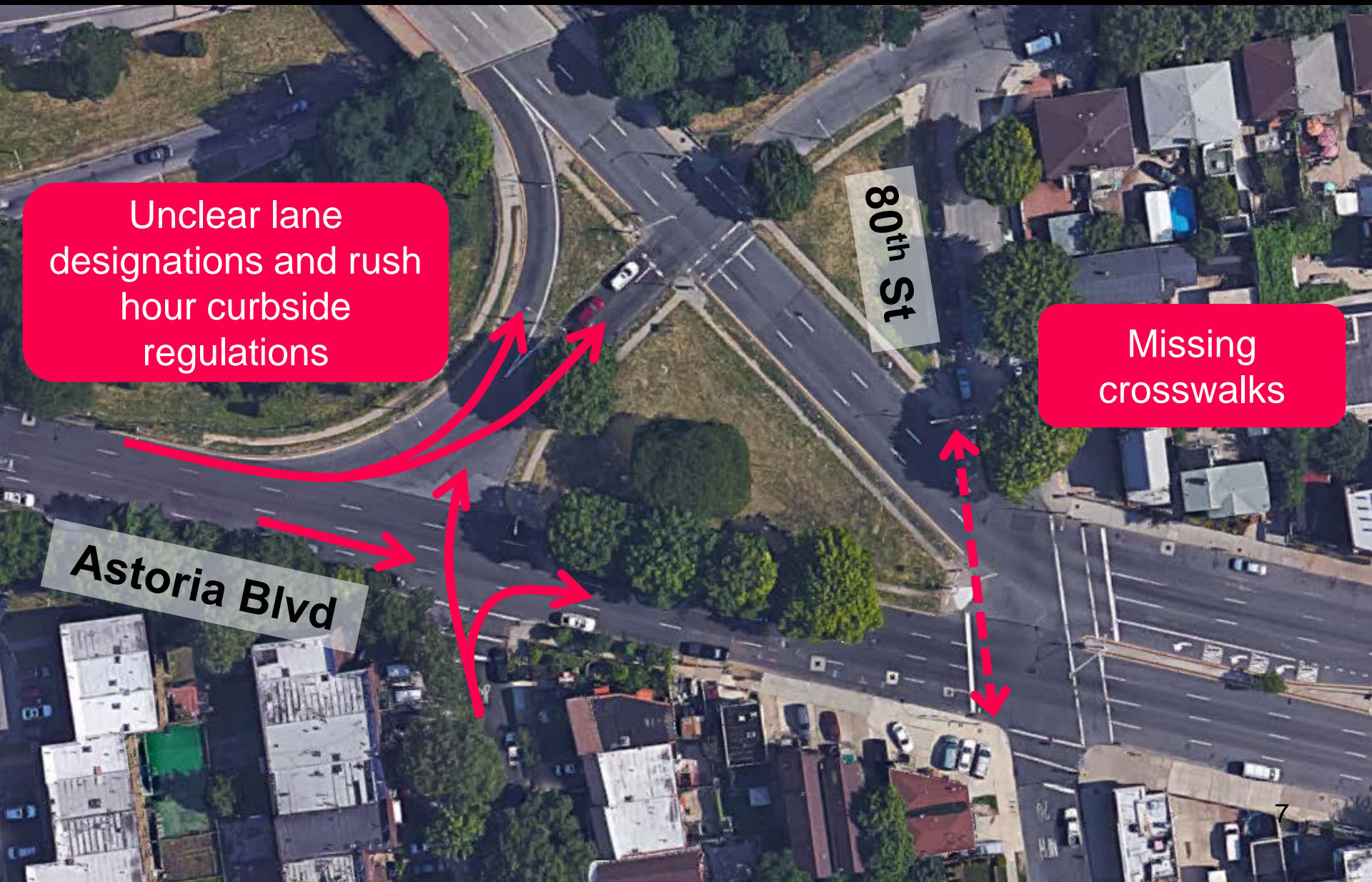
Bus Stop



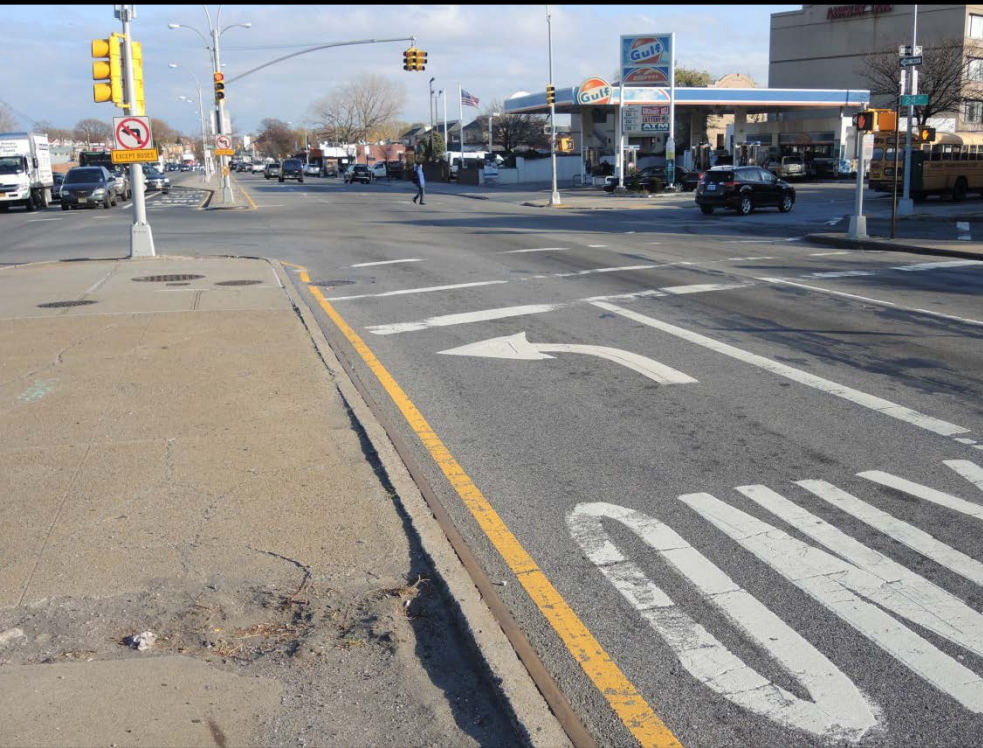
Long Distance Between Crossings



Confusing Gateway



Unclear Turn Lanes



Bus only left turn lane
and jug handle



Unclear Turn Lanes



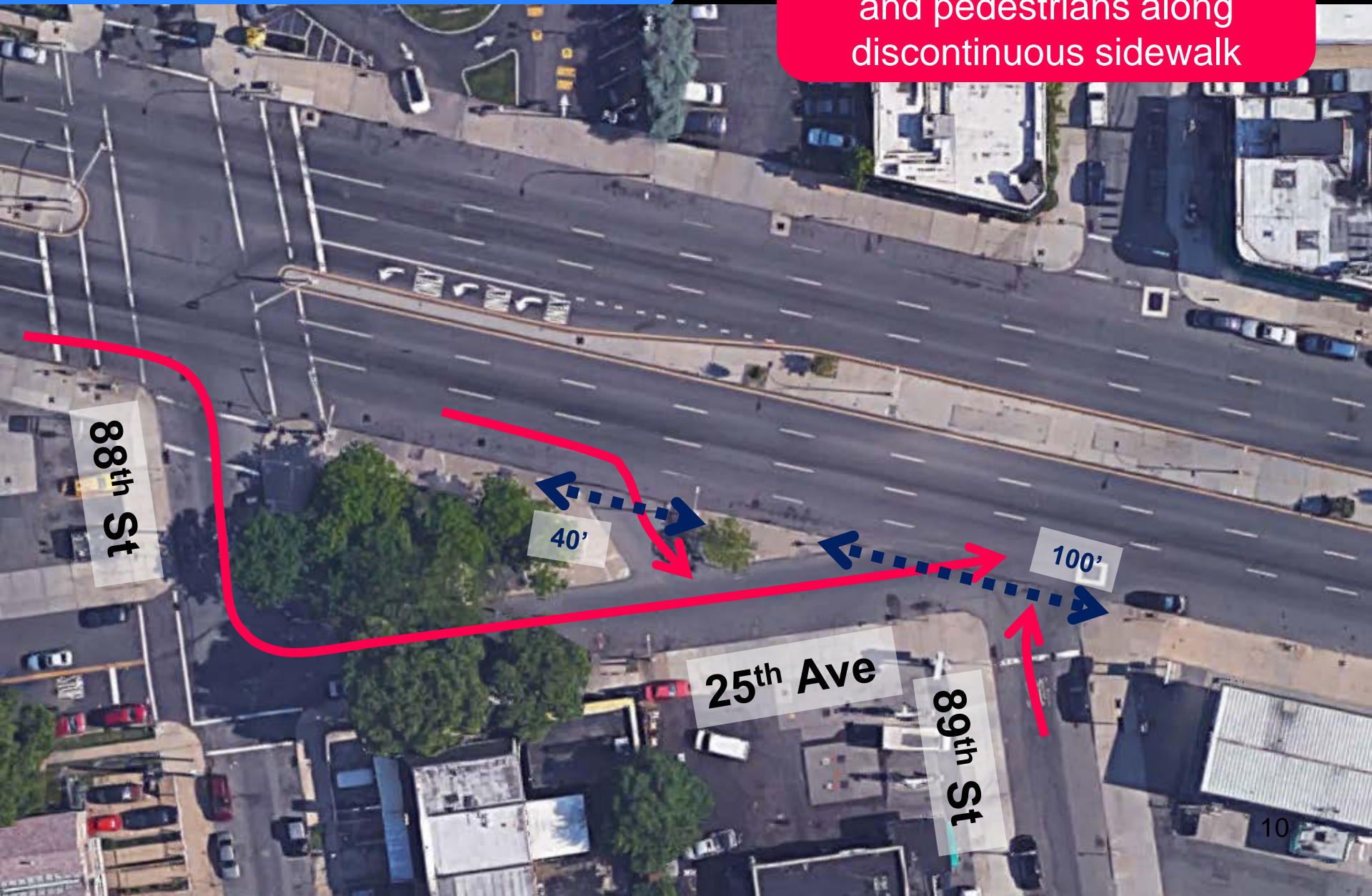
Left turn only lane
and phase but no bay
narrows Astoria Blvd
to two thru lanes

Two marked thru
lanes but possible
to use left turn lane
for thru traffic



Excess Slip Lanes

Increased potential for conflicts between vehicles and pedestrians along discontinuous sidewalk



88th St

25th Ave

89th St

40'

100'

Excess Slip Lanes



Missing sidewalk along
25th Ave

Increased potential for
conflicts between
vehicles and
pedestrians



Workshop Goals

Identify:

- Locations for safety improvements
- Areas of congestion
- Unclear intersections
- Points of conflict
- Desire lines, access points

**Redefine Astoria Blvd as a neighborhood boulevard,
rather than an extension of the highway**

Astoria Blvd – 77th St to 92nd St



A photograph of a city street intersection. A pedestrian is crossing the street in the foreground. Several cars are visible on the road. In the background, there are buildings, trees, and a clear sky. A 'Yield' sign is visible on the right side of the road.

www.nyc.gov/dot

**Thank
You**