

DOWNTOWN JAMAICA TRANSPORTATION STUDY



AGENDA

- **STUDY INTRODUCTION & BACKGROUND**
- **BREAKOUT SESSION**
- **REGROUP/RECAP**
- **QUESTIONS AND ANSWERS**

DOWNTOWN JAMAICA DEVELOPMENT TIMELINE



Jamaica Coliseum Mall
1984



MTA Expansion (J/Z/E)
1988



Civil Courthouse Opens
1997



Airtrain Operational
2003



York College Relocation
1986

SSA Building Opens
1989

One Jamaica Center Opens
2002

Jamaica Plan
2007

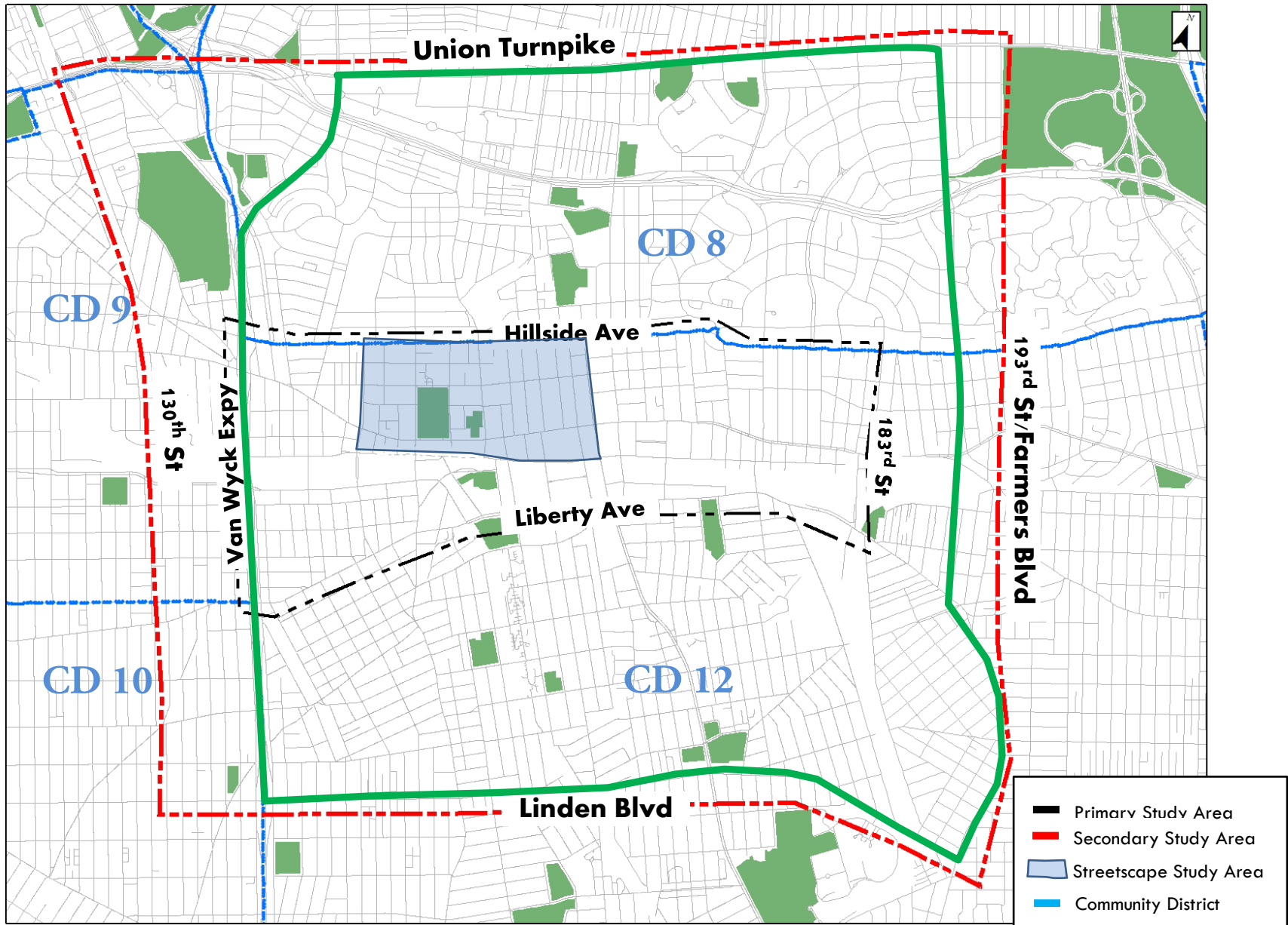


TRAFFIC & TRANSPORTATION ISSUES

- Traffic Congestion
- Surface Transit Delays
- Pedestrian Space/Safety
- Streetscape Deficiencies
- Commuter (Dollar) Vans
- Parking Shortfall



STUDY AREAS



GOAL & OBJECTIVES

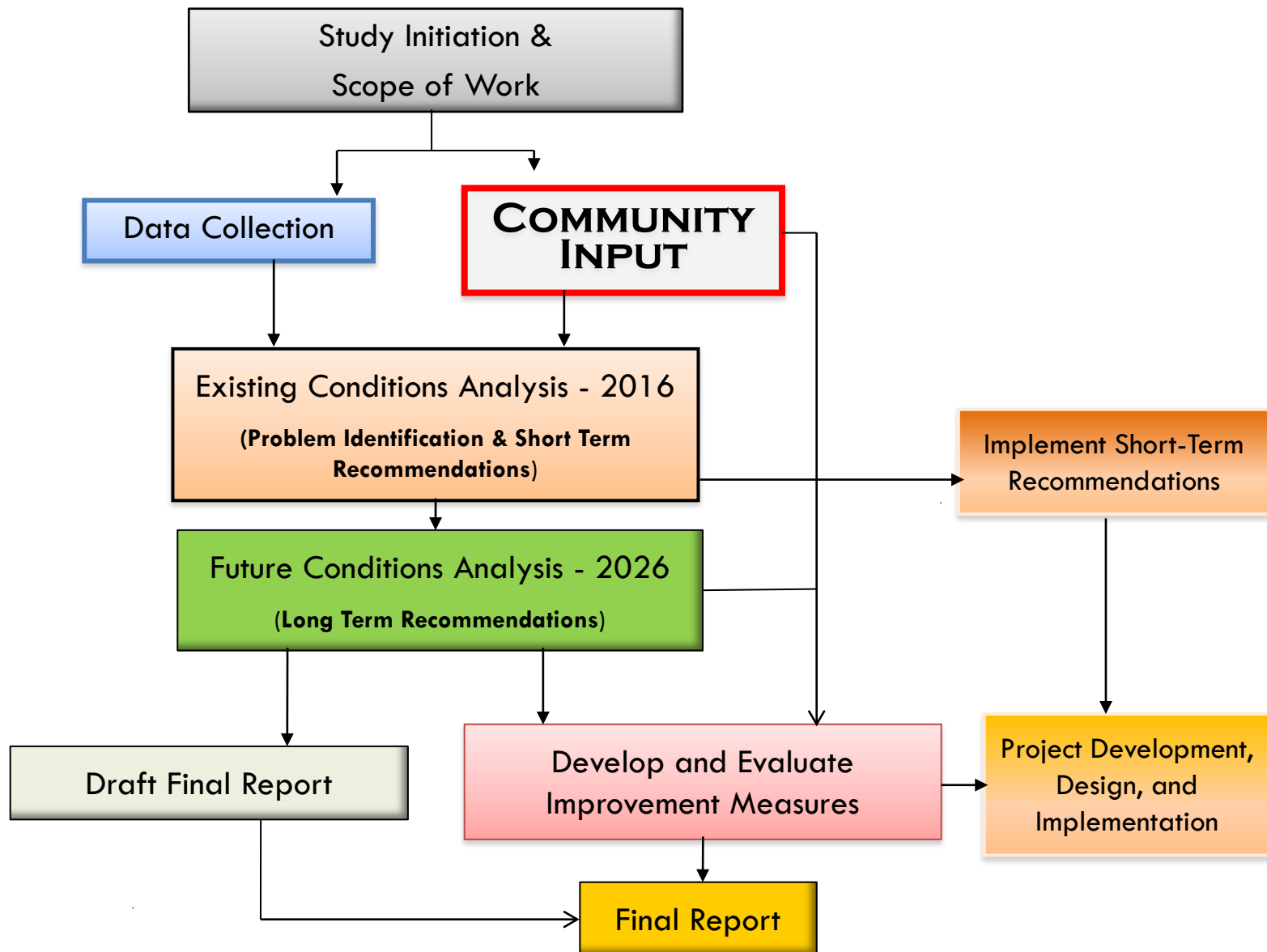
GOAL:

- To improve traffic and transportation (travel) conditions, enhance mobility and safety, and improve quality of life for residents and visitors

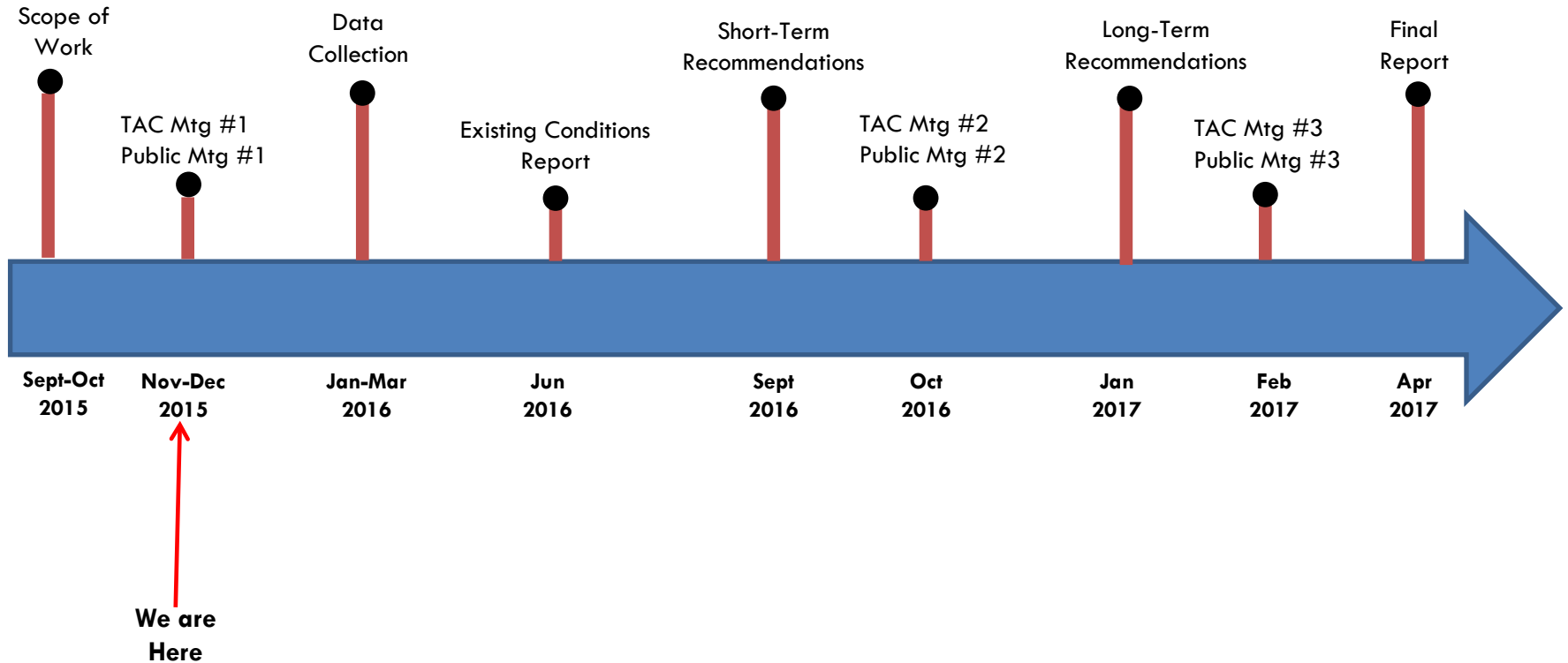
OBJECTIVES:

- To analyze and document existing traffic conditions including traffic characteristics, travel demand and travel needs.
- To assess future traffic conditions by taking account of area demographics, land use, socio-economic characteristics, and transportation infrastructure.
- Develop recommendations to enhance network capacity, reduce congestion, and improve traffic operations and safety for both vehicular and non-vehicular modes of travel

STUDY & IMPLEMENTATION PROCESS



MILESTONES



A large blue arrow pointing to the right, containing white text.

**TONIGHT'S OBJECTIVE:
IDENTIFY ISSUES**

DISCUSSION TOPIC 1: PEDESTRIANS , BICYCLISTS, & SAFETY



DISCUSSION TOPIC 2: TRAFFIC & CONGESTION



DISCUSSION TOPIC 3:

PARKING (ON-STREET & OFF-STREET)



DISCUSSION TOPIC 4:

TRUCKS (MOVEMENT & LOADING)



DISCUSSION TOPIC 5:

TRANSIT (TRAINS, BUSES, DOLLAR VANS, TAXIS, & SHUTTLES)



DISCUSSION TOPIC 6: QUALITY OF LIFE, STREETScape, & ENVIRONMENTAL FACTORS





Thank You!

Contact:

Craig Chin – Queens Boro Commissioner's Office - cchin@dot.nyc.gov - 212.839.2510

Carren Simpson - Transportation Study PM – JamaicaStudy@dot.nyc.gov – 212.839.7766

Erin Maciel – Streetscape Study PM – emaciel@dot.nyc.gov – 212.839.4345