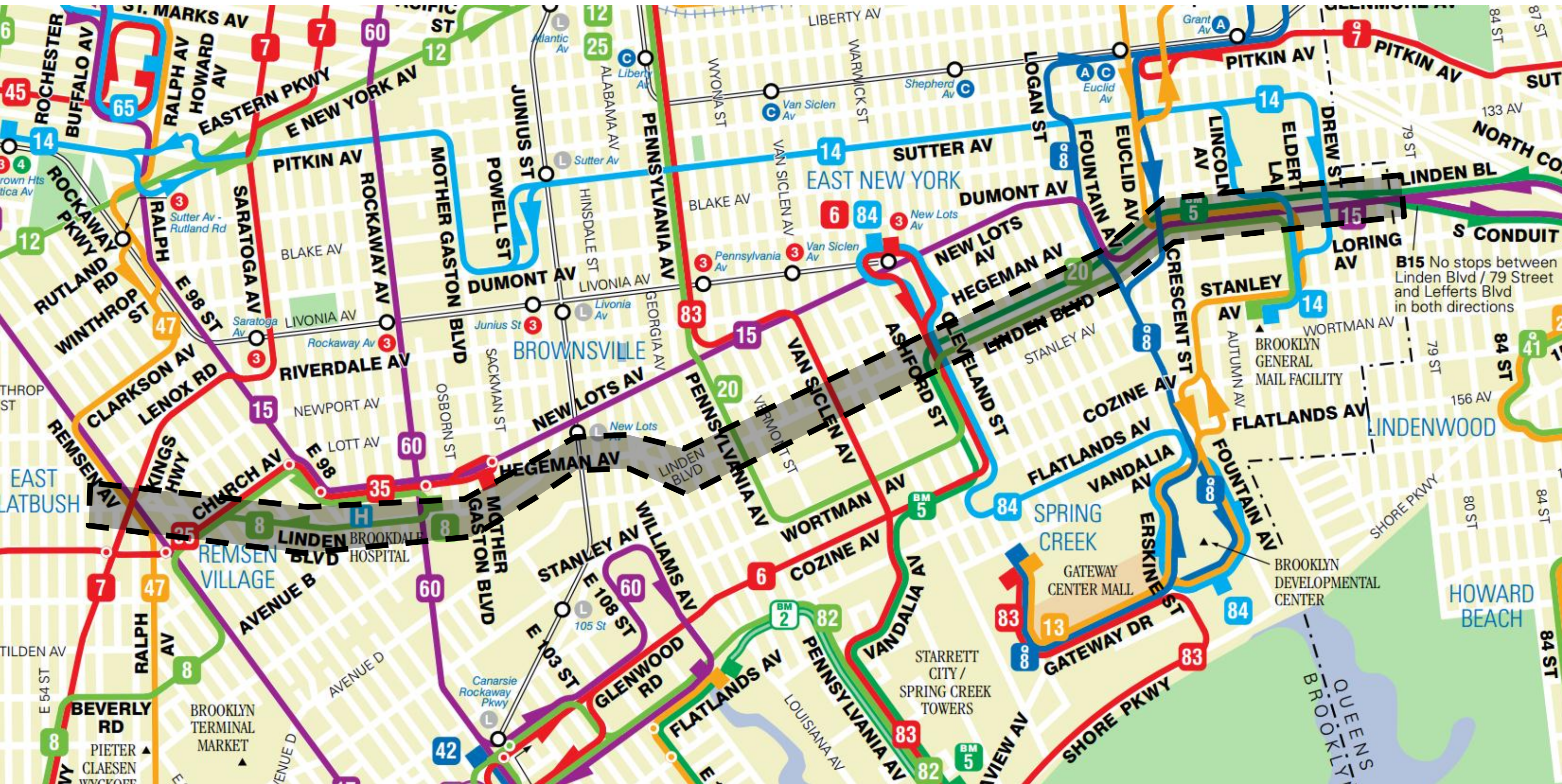


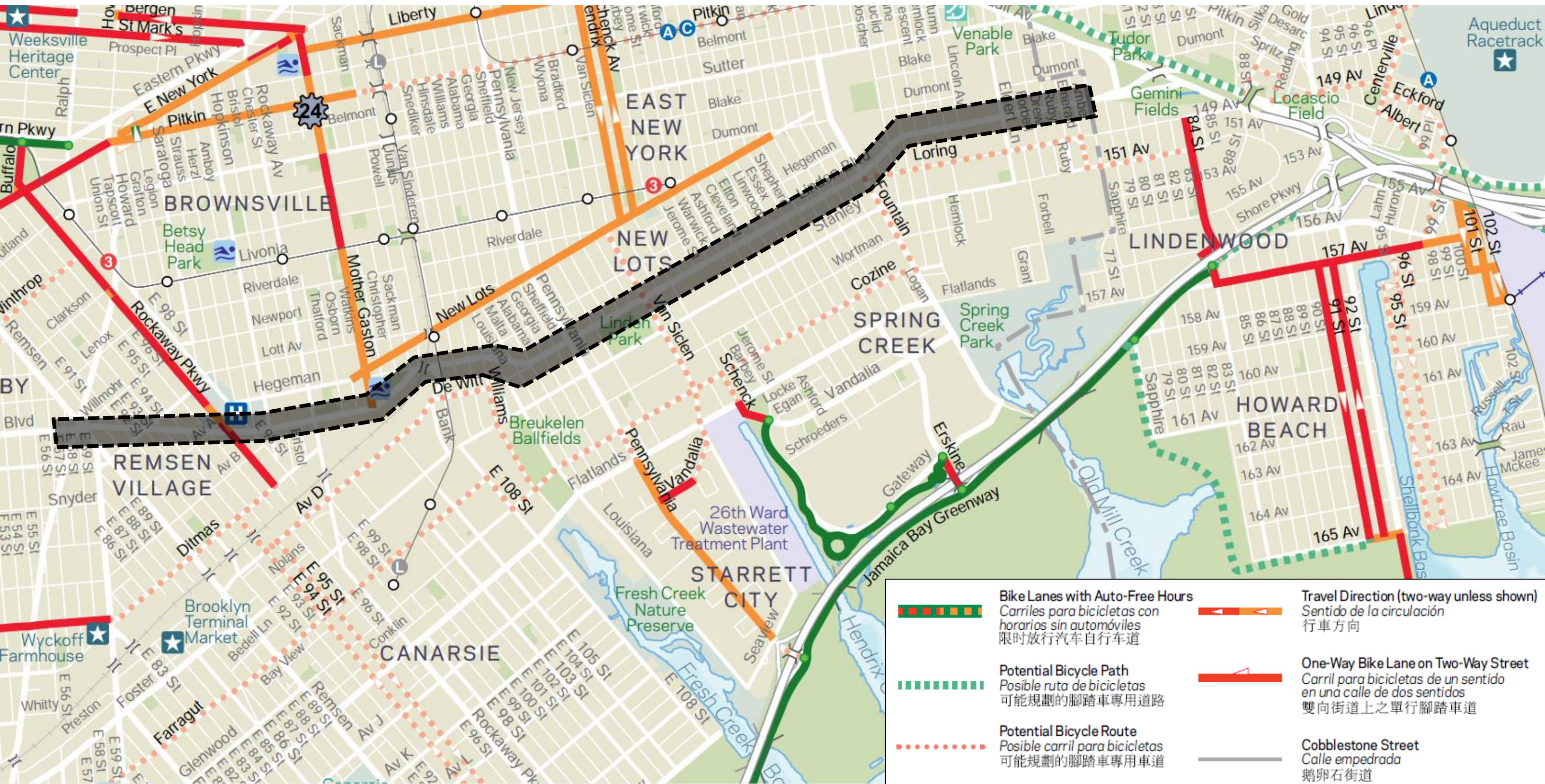
Brooklyn Subway Map



Brooklyn Bus Map



Brooklyn Bike Map



Brooklyn Truck Map



Existing Conditions

Narrow medians/Poor median condition



Linden Blvd at Church Ave



Linden Blvd at Rockaway Pkwy

Slip lanes and service roads



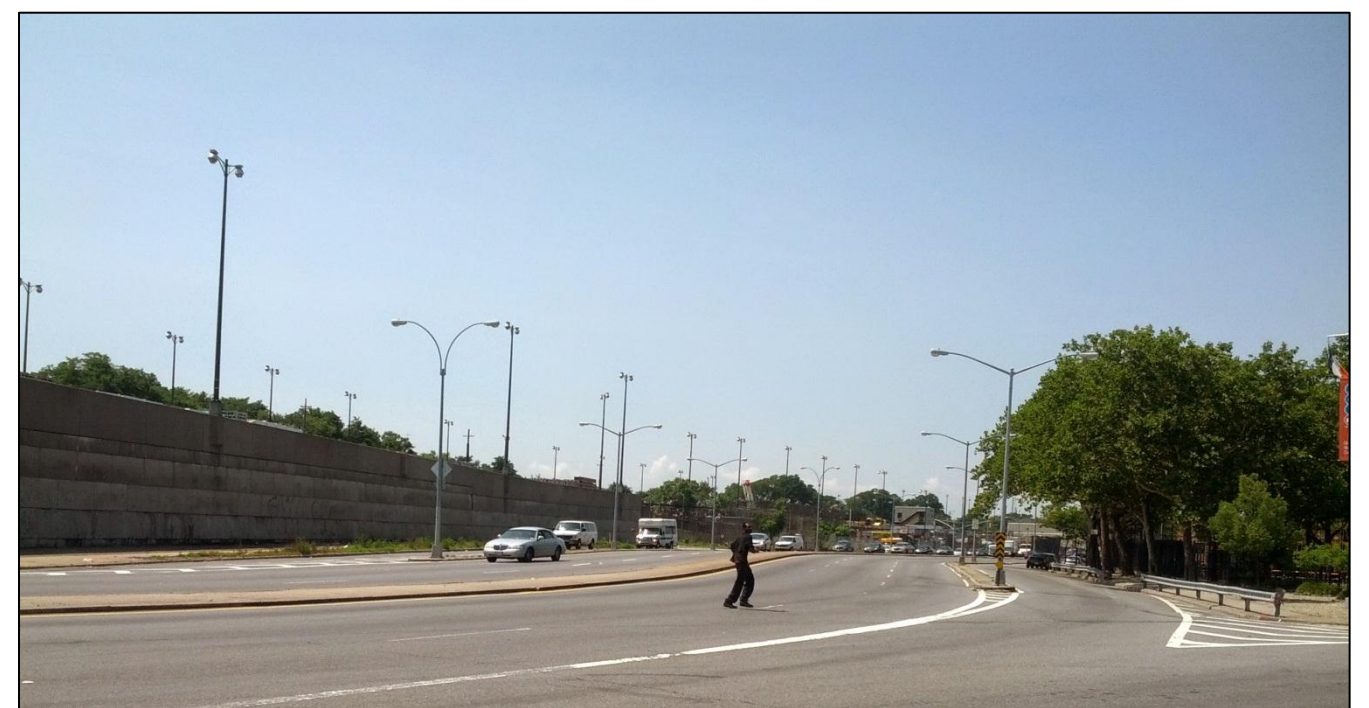
Linden Blvd at Rockaway Pkwy

Wide road / Long crossing distances



Linden Blvd at Euclid Ave

Long distances between crosswalks



Linden Blvd at Junius St/Powell St

Behavior

Midblock crossing



Linden Blvd near Fountain Ave

Speeding



Linden Blvd near Euclid Ave

Aggressive turning / failure to yield



Linden Blvd at Junius St/Powell St

Double parking / weaving on service roads

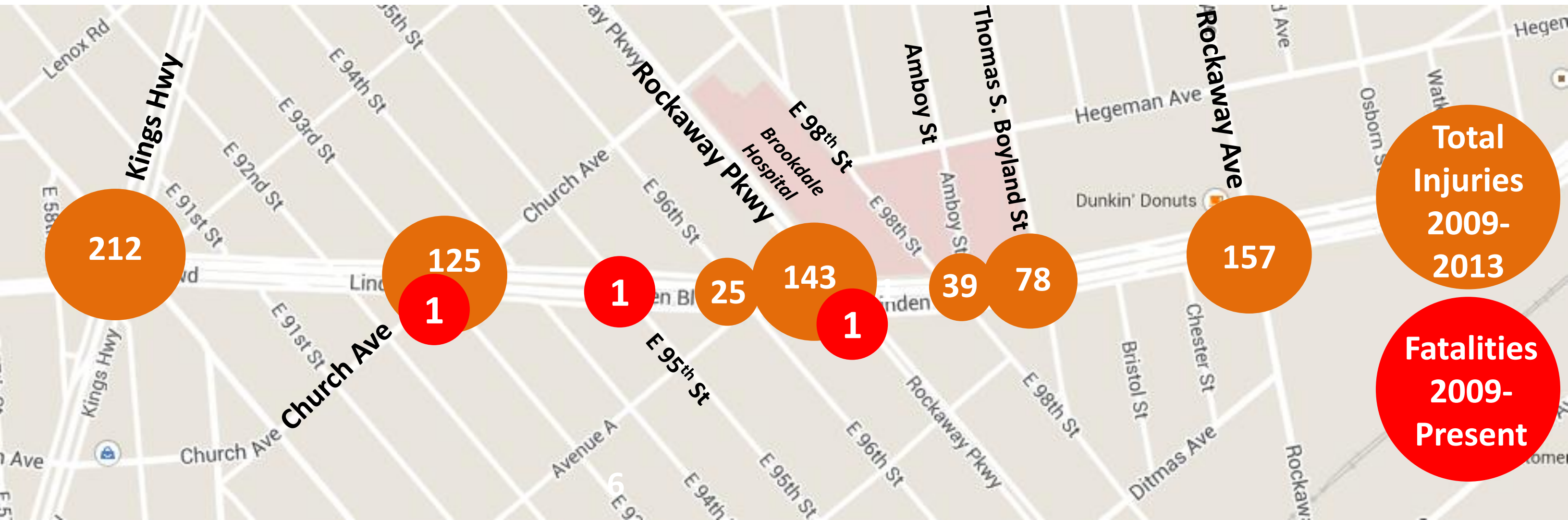


Linden Blvd at Van Siclen Ave

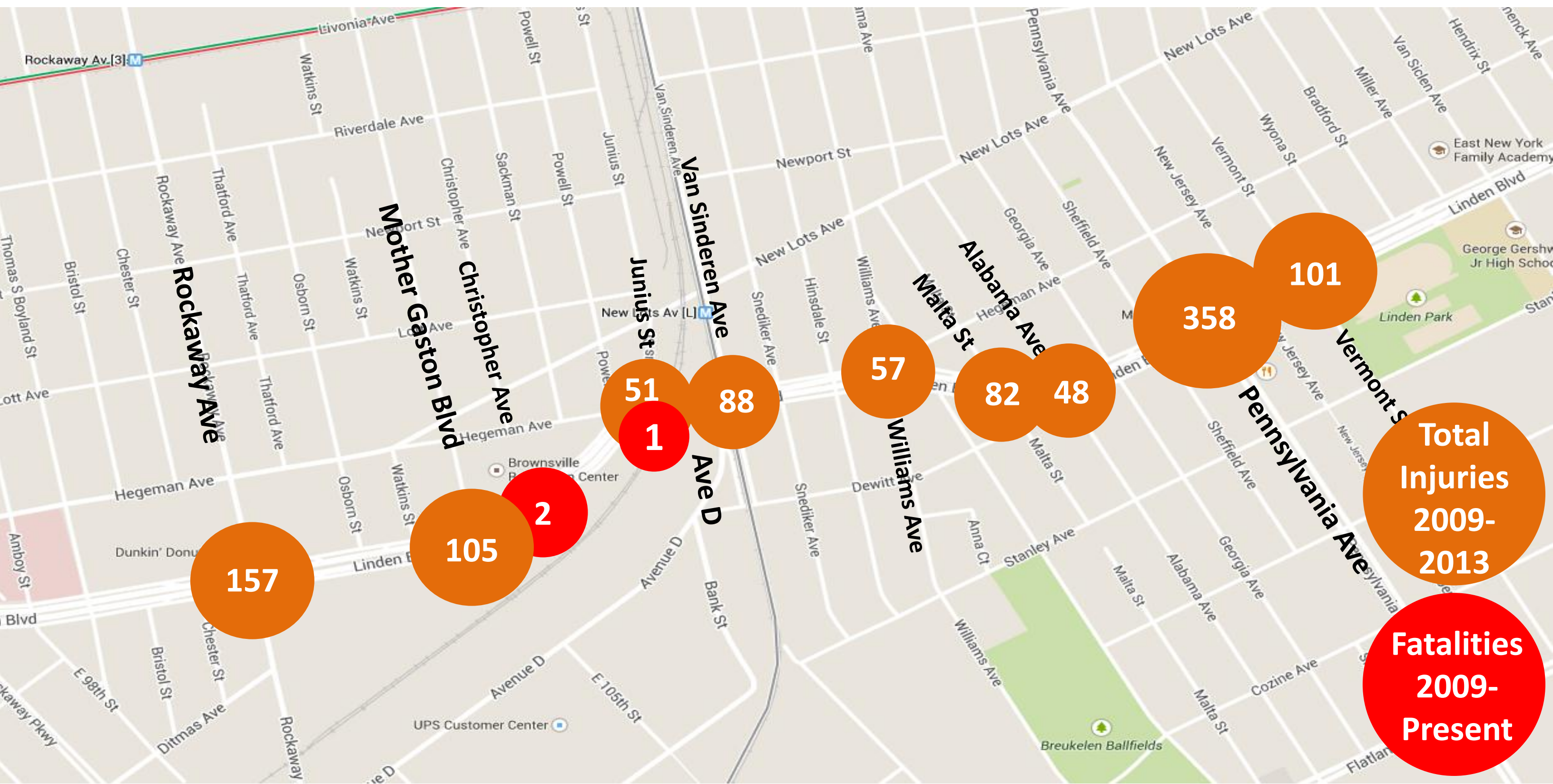
Safety Data: Linden Blvd

Total Injuries and Fatalities				
Linden Blvd - Kings Hwy to 78 St, BK				
Injury Summary, 2009-2013 (5 Years)				
	Total Injuries	Severe Injuries	Fatalities	KSI
Pedestrian	161	25	3	28
Bicyclist	50	6	2	8
Motor Vehicle Occupant	2637	94	1	95
Total	2848	125	6	131

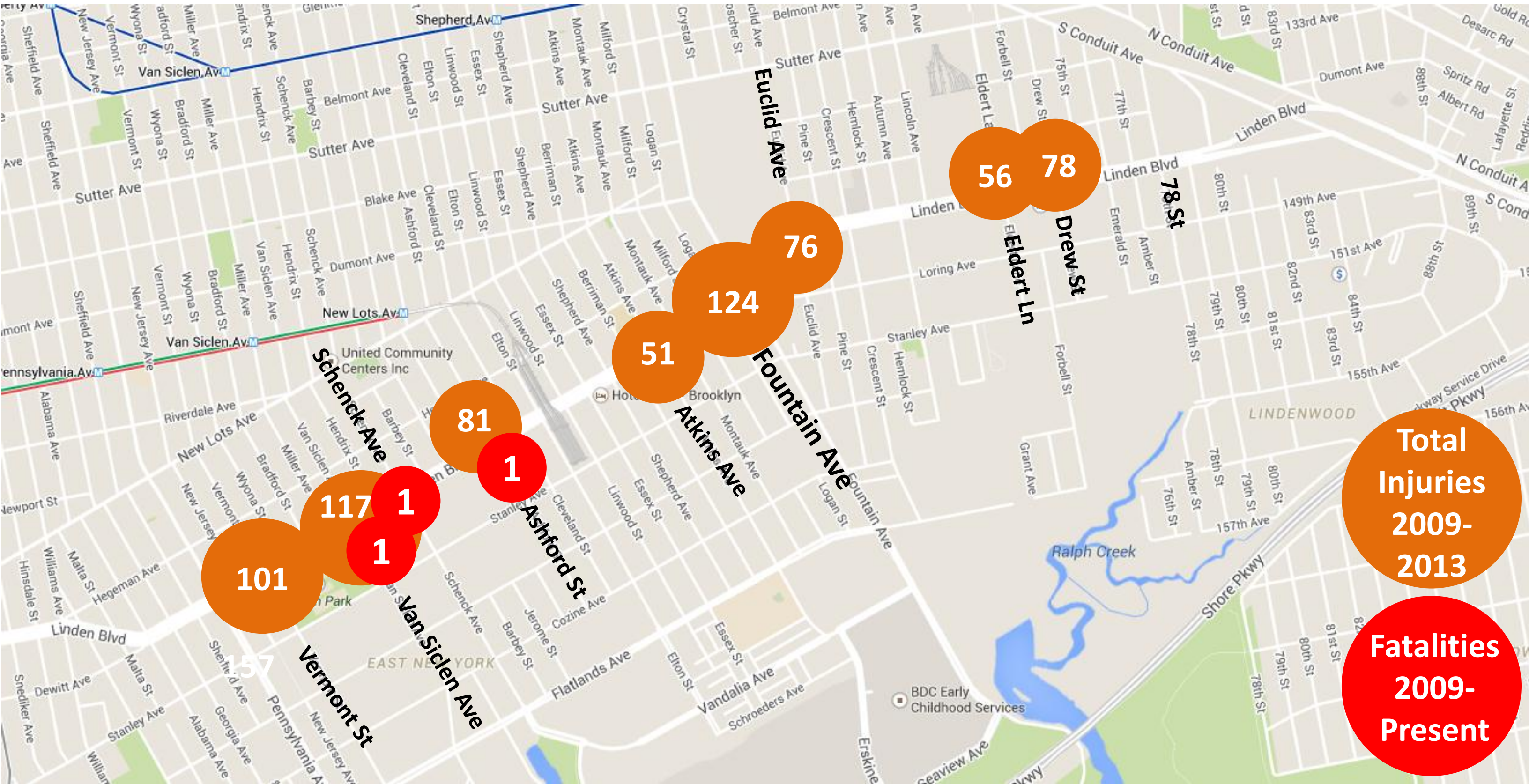
- ❑ Ranks in the top 10 percent of Brooklyn streets for severe injuries and fatalities per mile (2009-2013 crash data)
- ❑ 7 total fatalities along 3.8 mile corridor since 2009
- ❑ 34% of pedestrians hit at intersections, while crossing with the signal
- ❑ 26% of pedestrians hit at intersection, crossing against the signal
- ❑ Nearly all (94%) of cyclists hit at intersections
- ❑ Vehicle occupant injuries associated with:
 - Rear end crashes (32%)
 - Right angle crashes (17%)
 - Left turn crashes (12%)



Safety Data: Linden Blvd



Safety Data: Linden Blvd



Total Injuries
2009-
2013

Fatalities
2009-
Present

Markings Toolkit

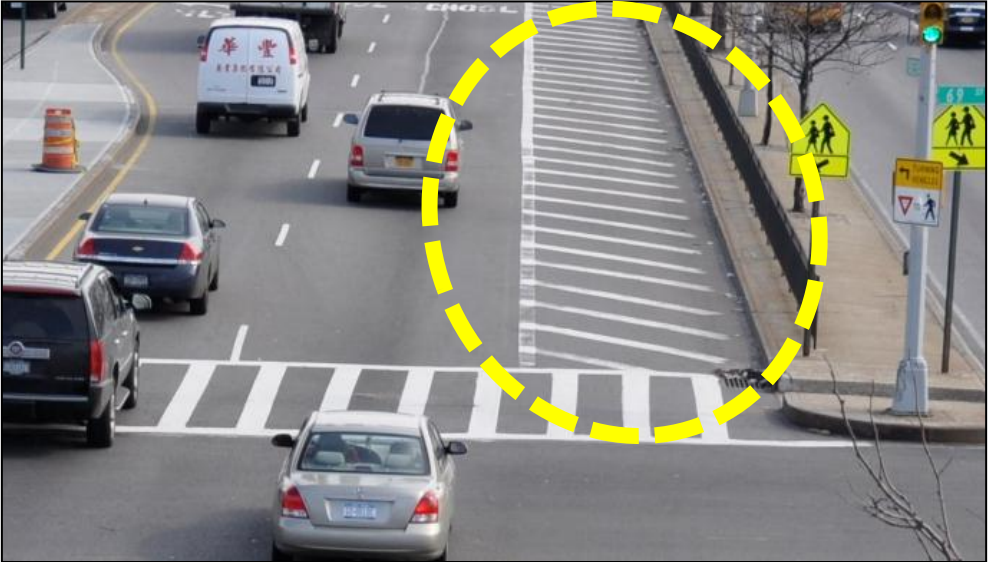
Wide, high-visibility crosswalks



Painted pedestrian space



Channelization/stripping



Daylighting/add visibility at corners



Parking lane stripe



Bus Lane



Standard bike lane



Buffered bike lane



Concrete Toolkit

Median tip extension/widening

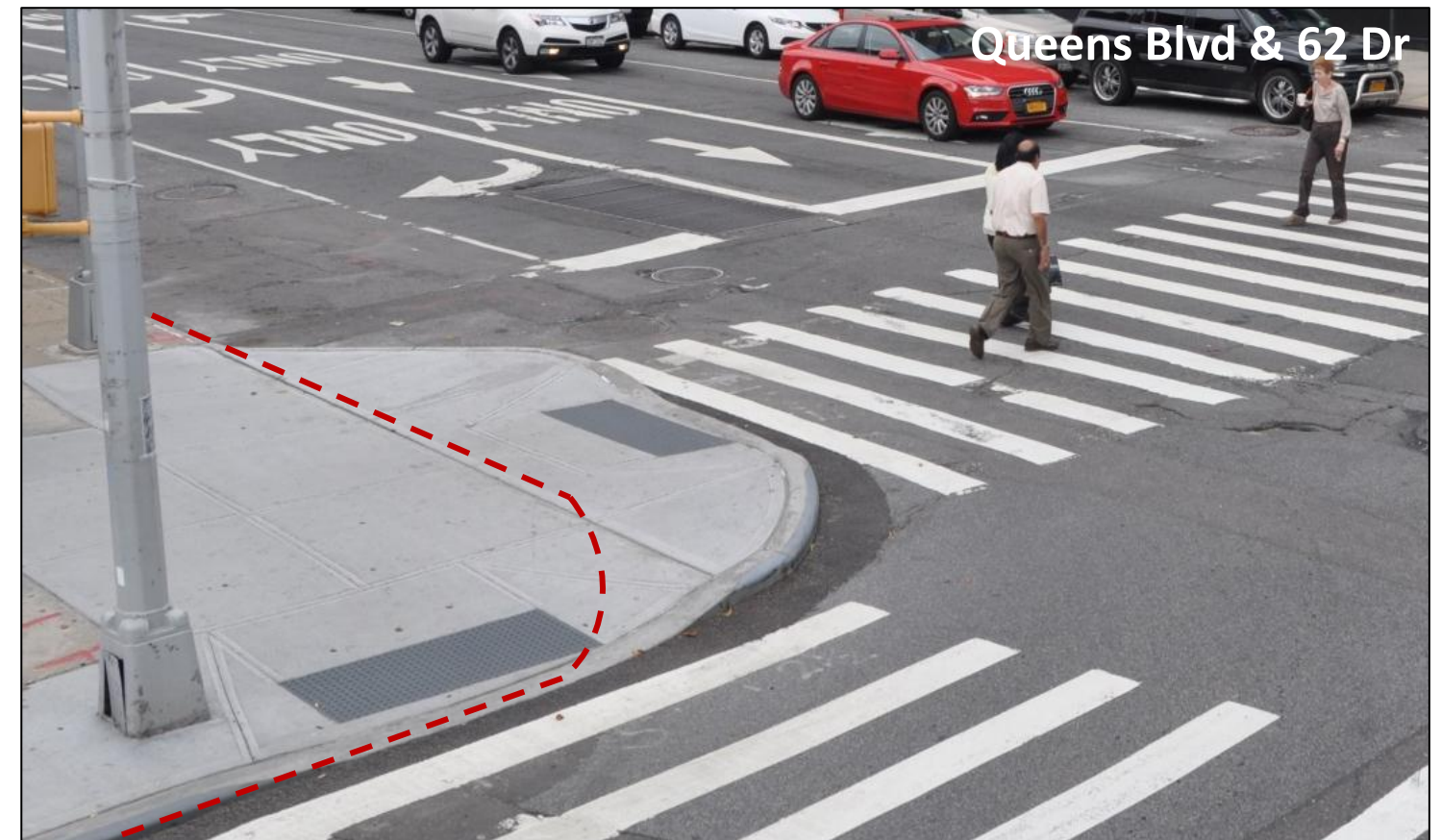


Expanded center median* (in turn bay, with turn ban)



*Can include tree pits

Curb/sidewalk extension



Traffic Control Toolkit

Street reversals/
one-way conversions



New signal construction



Signal timing changes



Stop controls and
parking regulations



Turn bans



Plastic bollards



Beautification Toolkit



Median Plantings



Public Art



CityBench

Map Exercise

Use the large map to identify locations where DOT should focus improvement efforts. Use the toolkits to guide your suggestions. Please be as specific as possible.



Jamaica Bay Greenway, Brooklyn
2014 community workshop



Brownsville/East New York, Brooklyn
2012 community workshop

Linden Boulevard: Summary Worksheet

Date:

Table:

Use this space to discuss safety issues on Linden Blvd. between Kings Hwy and 78 St. with your table. As a group, select your top points to share with the workshop. Please be as specific as possible.

Ex: Not enough time to cross Linden Boulevard at Rockaway Parkway by Brookdale Hospital

Safety Issues

[illegible]

Top Points to Share

