



MYRTLE AVE AND BROADWAY

Brooklyn Community Board 3 Transportation Committee

April 2019

PROJECT LOCATION

- Myrtle Avenue and Broadway
- Myrtle Ave and Broadway are both local truck routes
- Intersection is located underneath Myrtle Ave/Broadway J/M/Z subway station and contains B46, B47, and B54 bus stops
- December 2017 request for safety improvements from Community Board 3



NYC DOT OUTREACH

- Throughout 2018, NYC DOT Street Ambassadors conducted extensive outreach in Bedford Stuyvesant & Ocean Hill-Brownsville neighborhoods
- Myrtle Ave and Broadway was one of the 10 most frequently mentioned intersections by survey respondents
- Vehicles failing to yield was the top concern for pedestrians surveyed within Community Board 3



INTERSECTION SAFETY

Vision Zero

- 58 total injuries at the intersection
- 6 severe injuries, 2011 pedestrian fatality
- Both Myrtle Ave and Broadway are Vision Zero Priority Corridors within a Vision Zero Priority Area

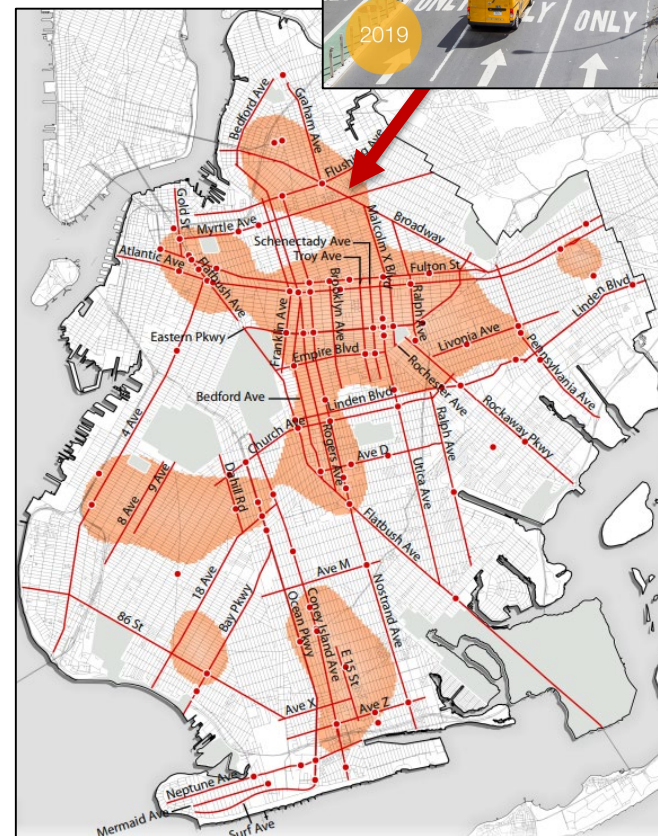
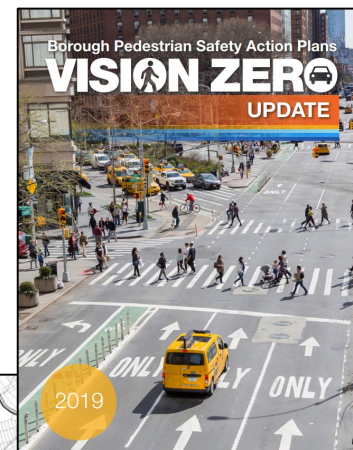
Myrtle Ave At Broadway, BK

Injury Summary, 2012-2016 (5 Years)

	Total Injuries	Severe Injuries	Fatalities	KSI
Pedestrian	19	1	0	1
Bicyclist	6	2	0	2
Motor Vehicle Occupant	33	3	0	3
Total	58	6	0	6

Fatalities, 01/01/2012-4/9/2018 : None

Source: Fatalities: NYCDOT
Injuries: NYSDOT
KSI: Persons Killed or
Severely Injured



EXISTING CONDITIONS

Column Placement

- Column located in the middle of westbound travel lane on Myrtle Ave
- Unpredictable vehicle movements to avoid it
- Vehicles turn and drive around either side of column
- Reduces visibility between pedestrians and drivers, increasing conflicts



EXISTING CONDITIONS

Heavy Pedestrian Volumes

- J, M, and Z Myrtle Ave / Broadway subway station
- B46, B47, and B54 bus stops at intersection
- Lack of sufficient pedestrian space, especially at rush hours



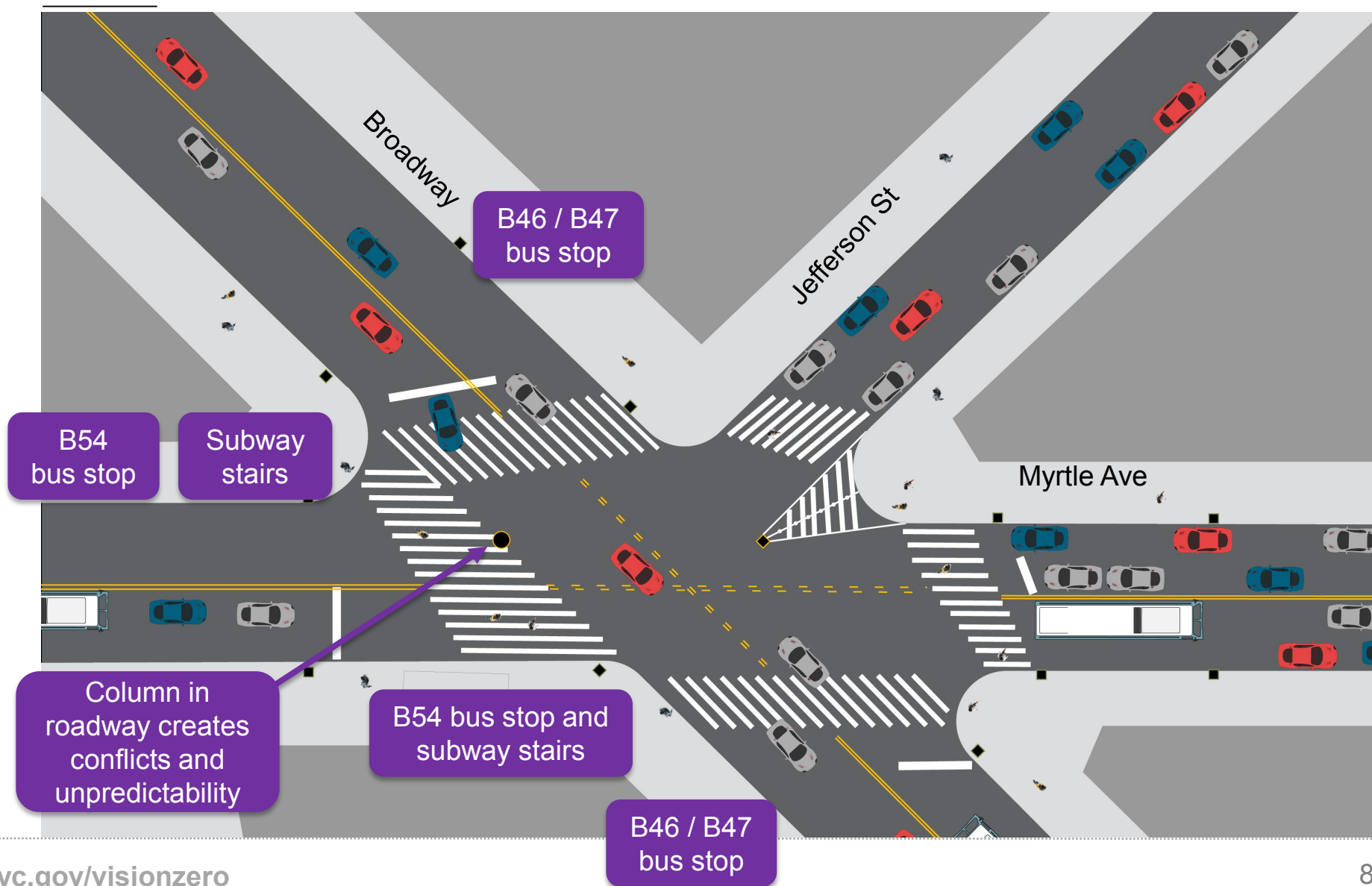
EXISTING CONDITIONS

Difficult, Dangerous Movements

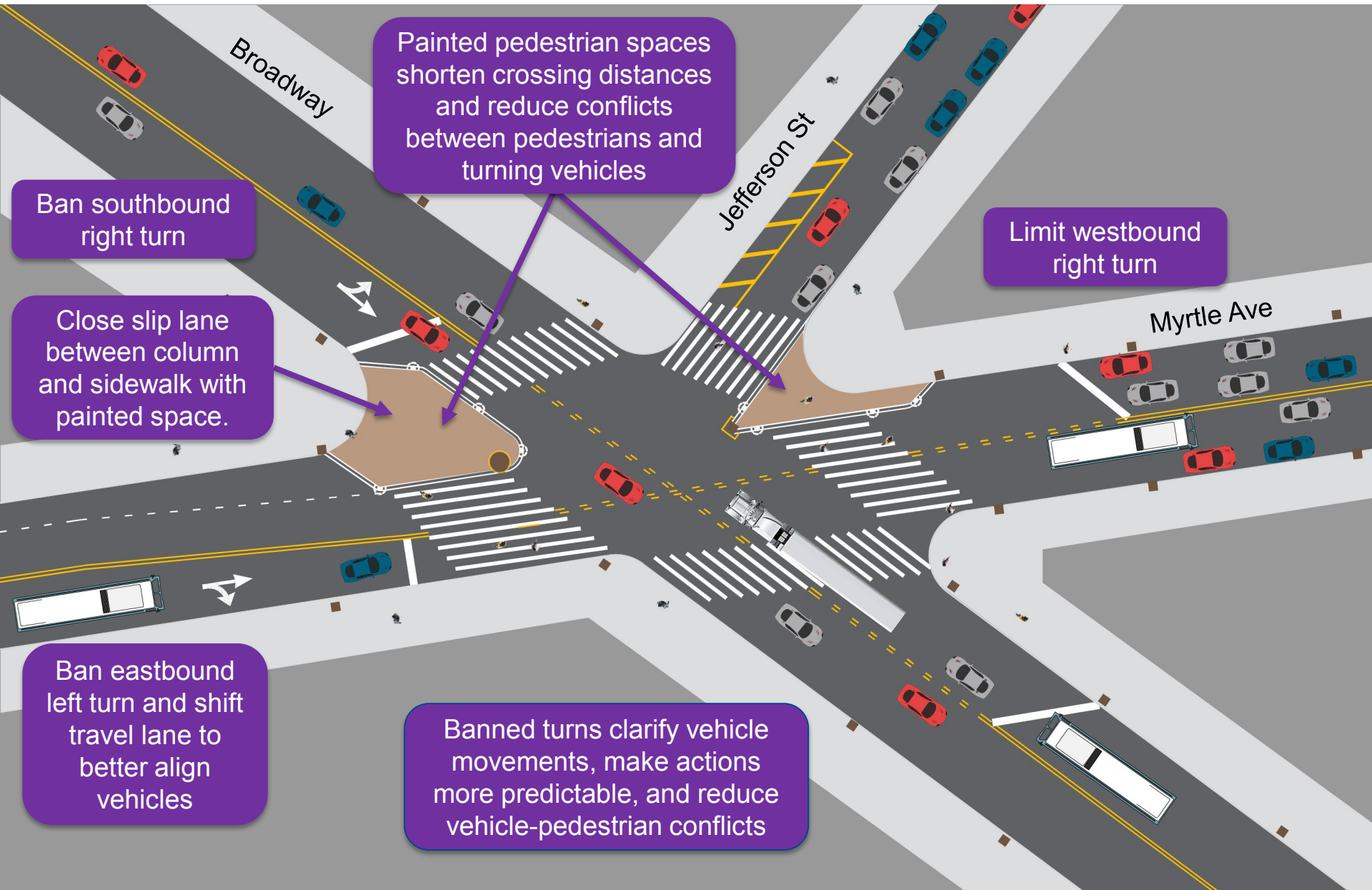
- Myrtle Ave and Broadway intersect at sharp angle making turns difficult, especially for larger vehicles
- Multiple subway columns in roadway provide obstacles for turns and hide pedestrians
- Lack of lighting under subway stations decreases visibility for all



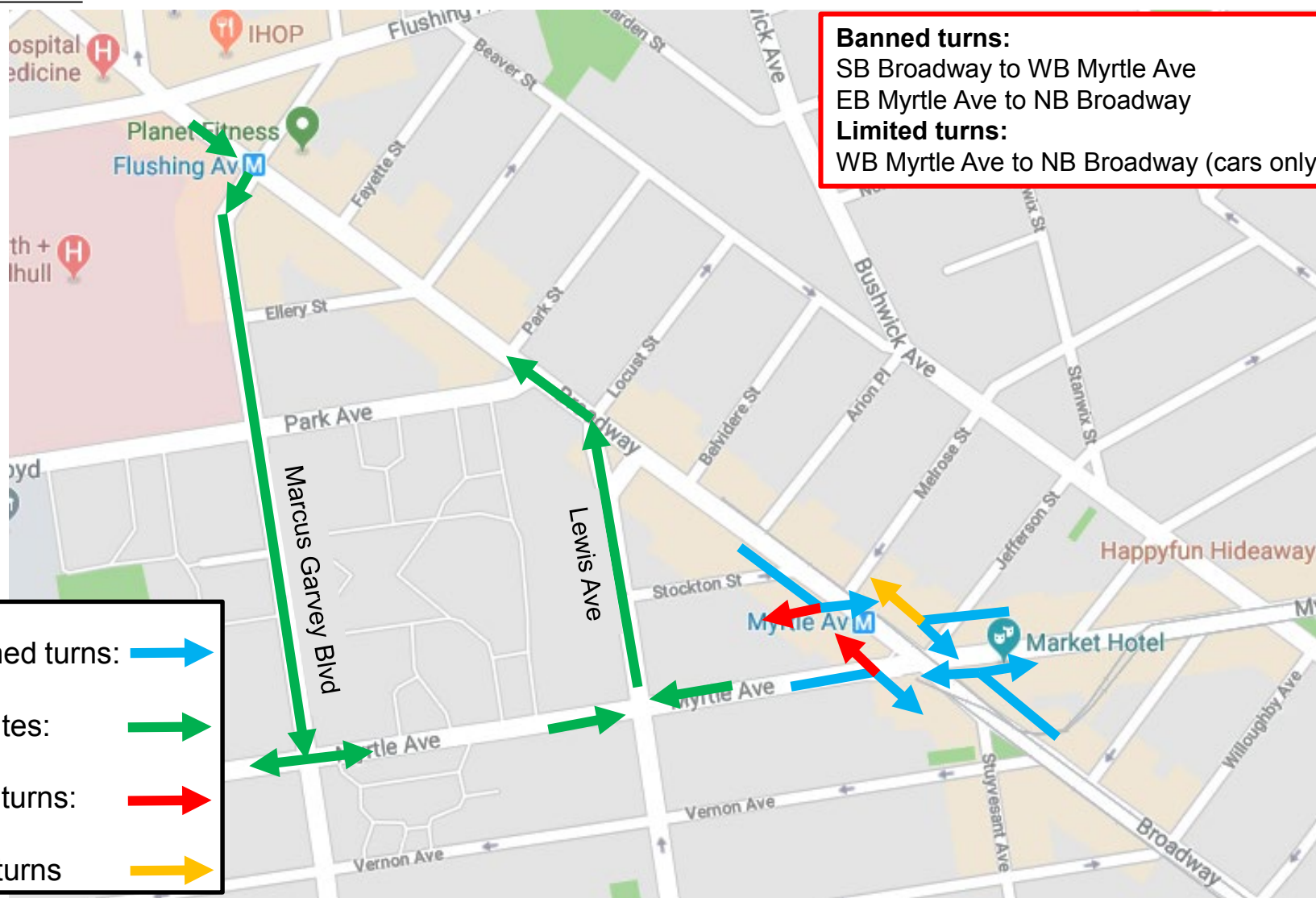
EXISTING CONDITIONS



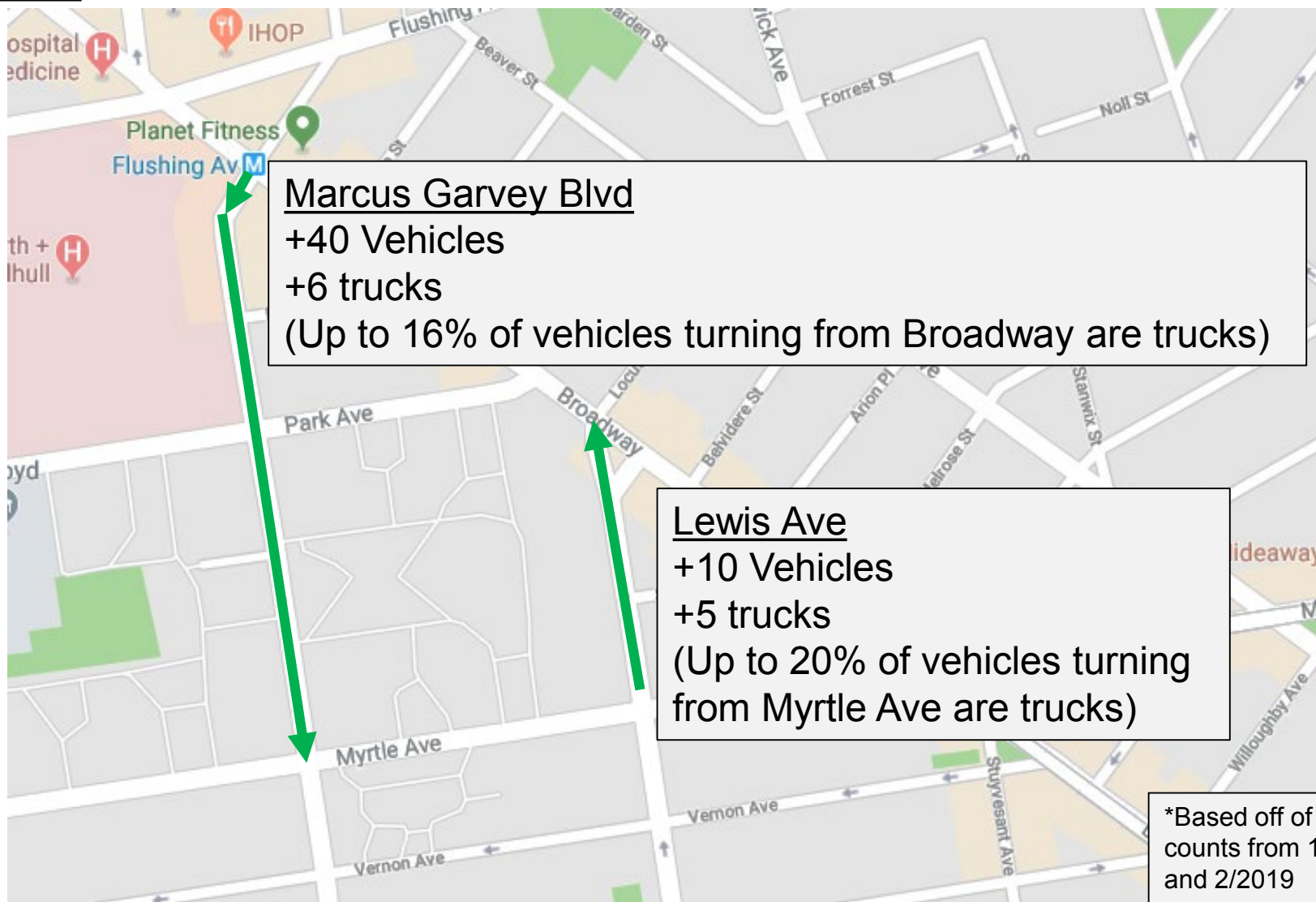
PROPOSED CONDITIONS



TURN BANS AND ALTERNATE ROUTES



CHANGES IN TRAFFIC VOLUMES



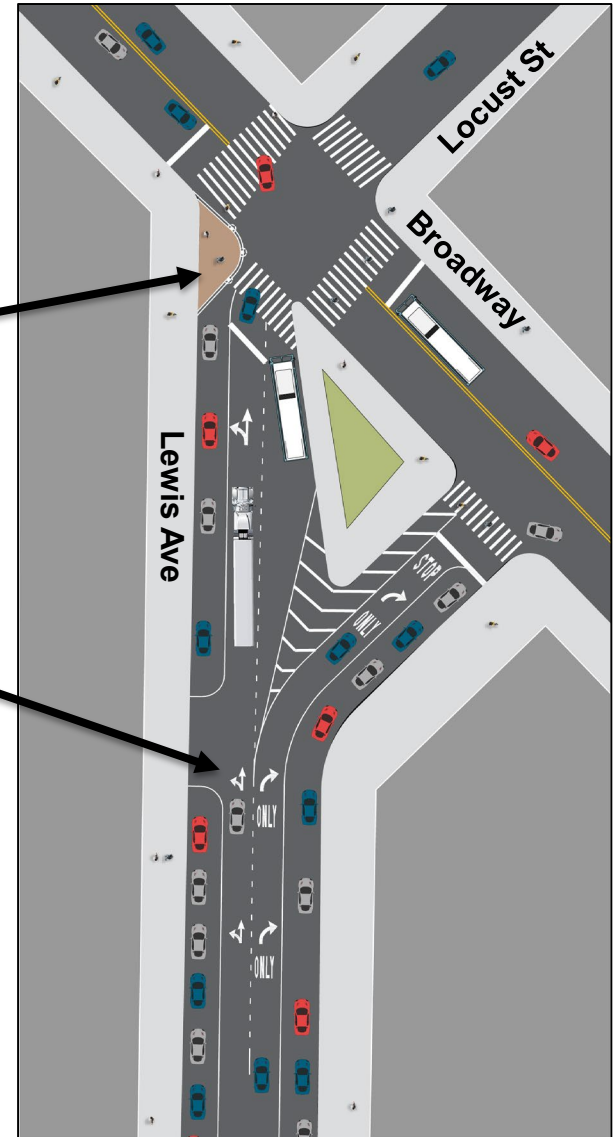
ADDITIONAL SAFETY IMPROVEMENTS

Lewis Ave

- Parking lane stripe between Myrtle Ave and Broadway organizes vehicles
- Painted curb extension at Lewis Ave and Broadway creates slower, safer turns and shortens pedestrian crossing distances
- Lane delineation and signage to clarify movements on Lewis Ave at Broadway
- Loss of 1 parking spot at intersection of Lewis Ave and Broadway

Marcus Garvey Blvd

- Stripe parking lane to define travel lanes and organize vehicles between Broadway and Myrtle Ave



BENEFITS OF PROPOSAL

- Provides additional clarity at challenging intersection
- Eliminates difficult turns with heavy vehicle/pedestrian conflicts
- Realigns roadway geometries to create simpler, safer movements through intersection
- Increases pedestrian space at crowded transit hub
- Creates shorter, safer crossings for pedestrians



THANK YOU!

Questions?



NYCDOT



nyc_dot



nyc_dot



NYCDOT