

North Williamsburg Transportation Study

**PEDESTRIAN
SAFETY**

CONGESTION

PARKING

**COMMUNITY
ISSUES**



Agenda

- Introduction
- Goals & Objectives
- Study Area Boundaries
- Project Organization and Methodology
- Areas of Analysis
- Other Initiatives
- Next Steps
- Questions and Answers

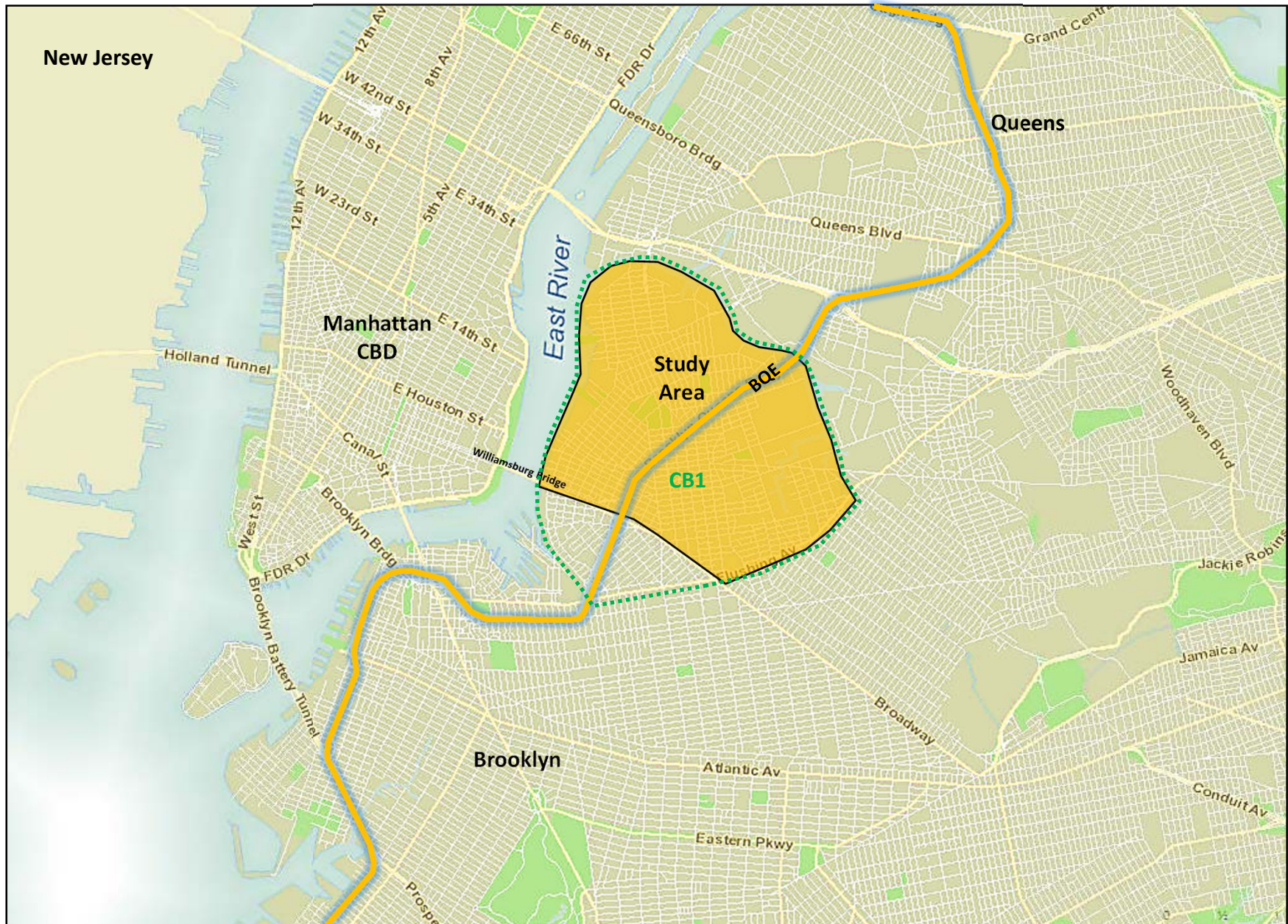
Study Goal

- To improve traffic circulation and safety for all street users with extensive community participation.

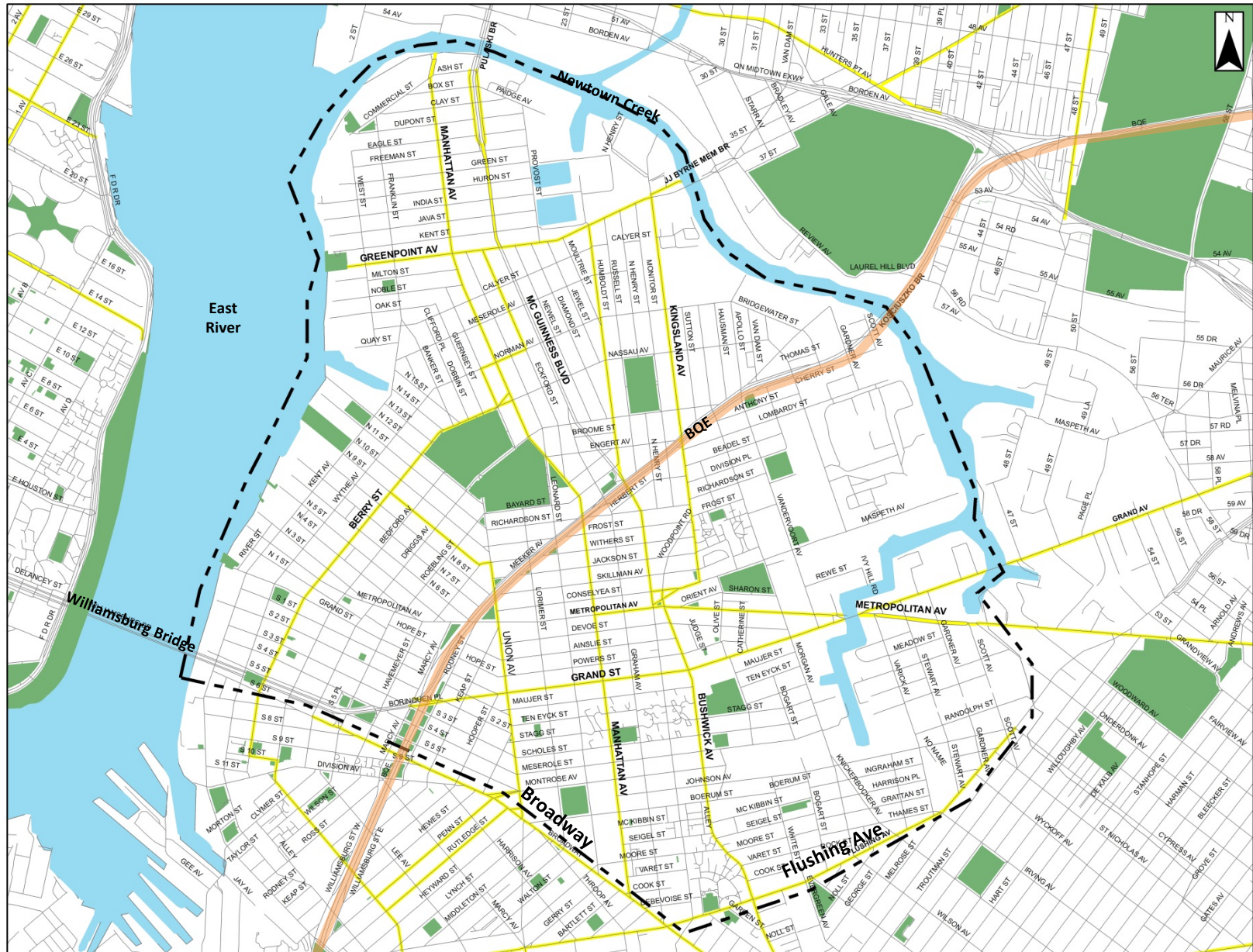
Study Objectives

- To evaluate existing and future travel and traffic conditions
- To facilitate extensive public participation through TAC, public meetings and workshops to document community issues
- To generate recommendations and develop improvement measures to address community concerns and traffic and transportation issues

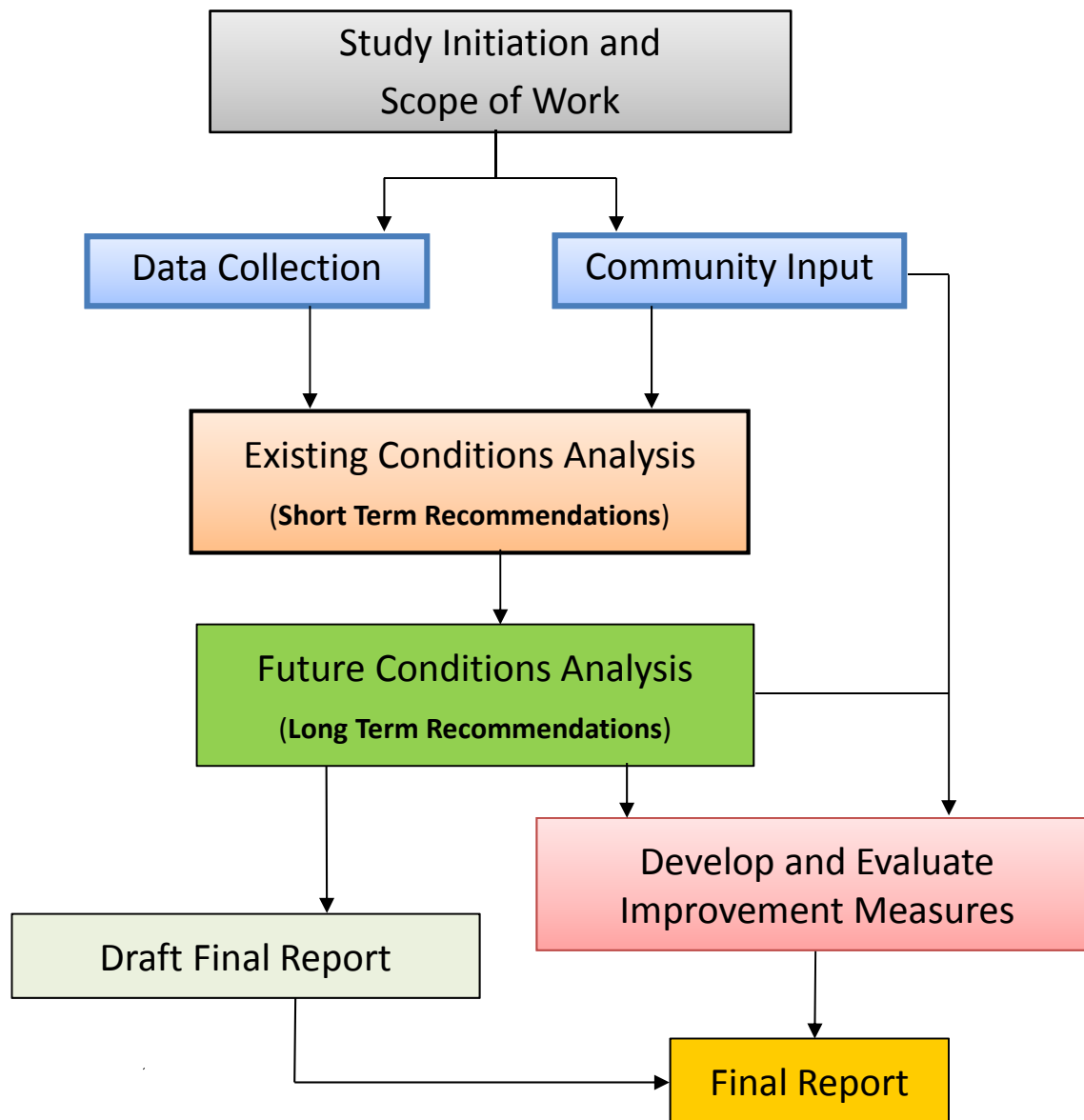
Regional Context



Study Area - Boundaries



Organization and Methodology



Ensure coordination with other agencies and initiatives

Subjects of Analysis

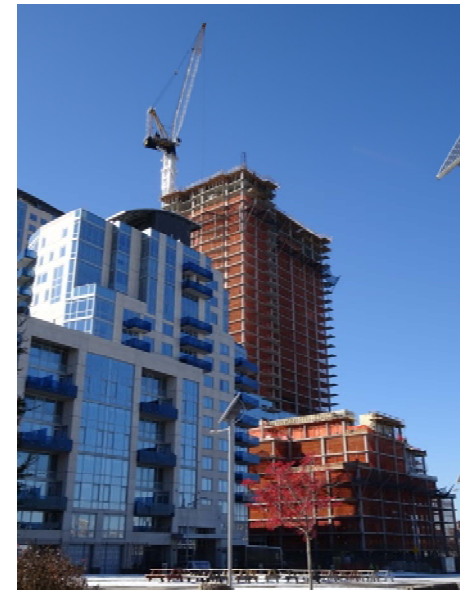
- Demographics
- Zoning and Land Use
- Traffic and Transportation
- Pedestrian and Bicycles
- Goods Movement/Trucks
- Crashes/Safety
- Parking
- Public Transit

Demographic/Socio-Economic Data

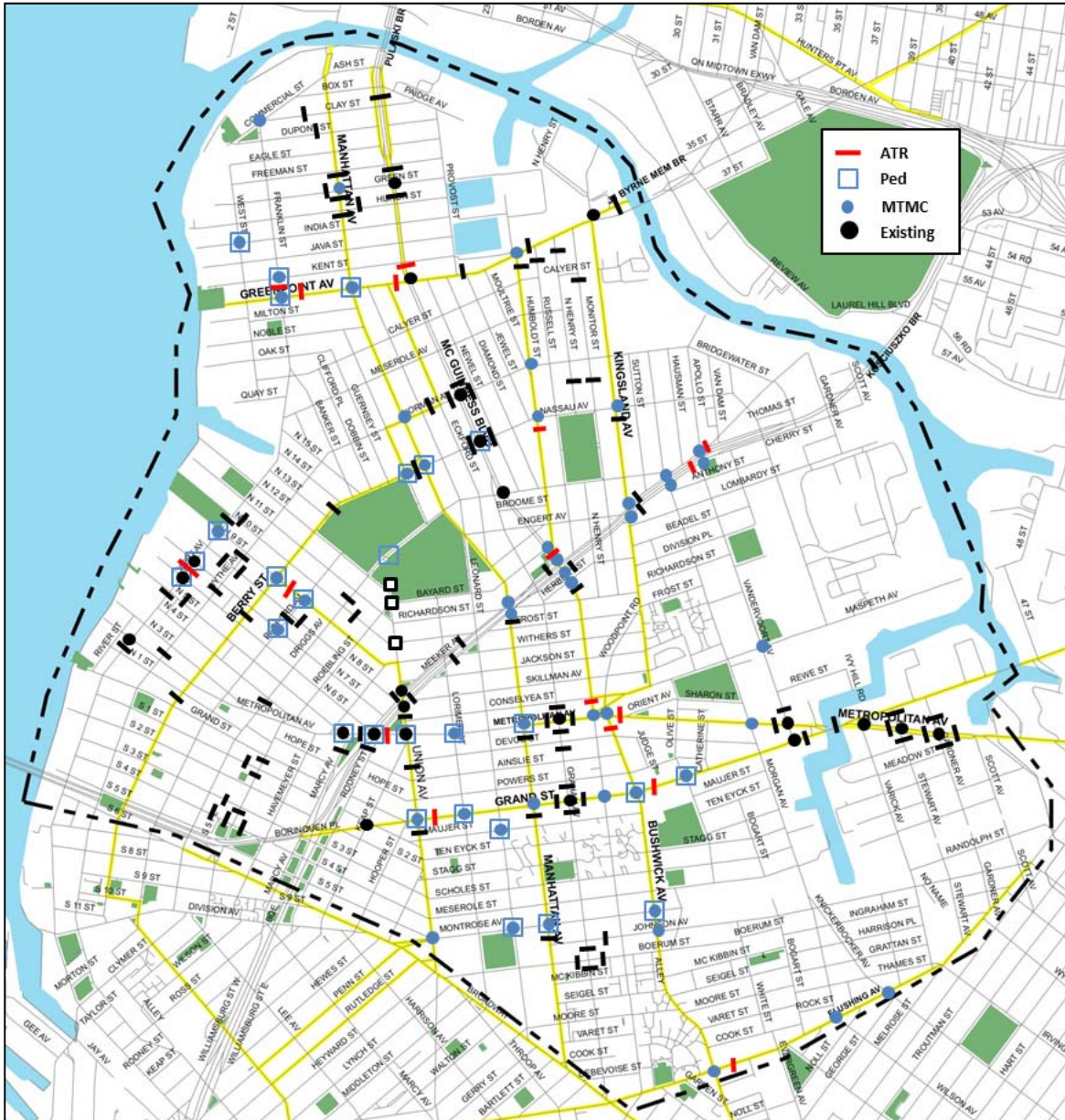
- Population Characteristics
- Household Size
- Household Income
- Vehicle Ownership
- Journey to Work by Mode

Zoning and Land Use

- **Zoning**
 - Zoning Districts
 - Recent Rezoning
- **Land Use**
 - Land Use Distribution:
 - Residential, Commercial, Industrial
 - Institutional and Community Facilities
 - Trip Generation



Traffic Data Collection Plan



Traffic Data

- ATRs, Manual Turning Movement & Classification Counts
- Pedestrian Counts
- Travel Speed
- Signal Timing
- Street Inventory (Geometry)

Bikes and Pedestrians

- Pedestrian flow/density
- Pedestrian desire lines
- LOS at crosswalks/corners
- Bicycle facilities and volume



Goods Movement/Trucks

- Truck Routes (Through and Local)
- Loading/Unloading Activities
- Needs of the Industrial Business Zone



Crash/Safety Analysis

- Crash History (3 most recent years)
- Crash Type, Frequency, Severity
- Fatalities/High Crash Locations

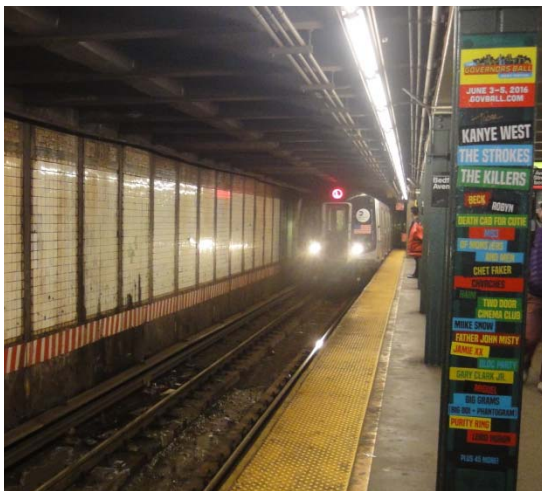
Parking Analysis

- **On Street Parking**
 - Parking Regulations
 - Parking Supply and Demand
 - Price Structure
- **Off Street Parking**
 - Lots/Garages
 - Capacity, Utilization
 - Price Structure



Public Transit

- **Bus/Subway/Ferry**
 - Transit Ridership
 - Service Frequency
 - Bus Stops, Subway Stations, Ferry Landings, Transfer Points and Pedestrian Concentrations



Other Initiatives



Next Steps

- Execute Data Collection Plan
- Existing Conditions Analysis
- Draft Tech Memo No. 1 (End 2016)
 - Existing Conditions Analysis and Short Term Recommendations
- Conduct TAC and Public Meeting #2 (Dec/Jan 2016)
- Future Conditions Analysis with Recommendations
- Develop Improvement Measures
- Conduct TAC Meeting and Public Meeting #3 (June 2017)
- Draft Final Report (Fall 2017)
- Develop Implementation Plan

Project Schedule

Project Tasks/Dates	2015	2016						2017				
	Nov/ Dec	Jan/ Feb	Mar/ Apr	May/ Jun	Jul/ Aug	Sep/ Oct	Nov/ Dec	Jan/ Feb	Mar/ Apr	May/ Jun	Jul/ Aug	Sep/ Oct
Develop Scope of Work												
Data Collection												
TAC Meeting												
Public Meeting												
Existing Conditions Analysis & Short Term Recommendations												
Draft Tech. Memo 1 – Existing Conditions												
Draft Tech. Memo 2 - Future Conditions												
Develop Recommendations												
In-House Review												
Final Report												

Milestones-



1. Scope of Work
2. Existing Conditions Report

3. Future Conditions Report
4. Final Report



Feedback Portal

<http://www.nycdotfeedbackportals.nyc/n-williamsburg-study/>

Select Language

NEW YORK CITY

N WILLIAMSBURG STUDY

Click the marker icon and place it on the map to add a comment.

RECENT COMMENTS

- Any - Filter

- Bike Lane Requested 05/04/2016 - 17:16
This bridge is a pretty critical missing connection for bikes between Williamsburg and Ridgewood
★★★★★ Average: 5 (1 vote)
- Uncomfortable for Novice Cyclists 05/04/2016 - 17:11
this section on Franklin is really a missing link in the BWG, making it dangerous for novice cyclists to get between Kent Ave and the Pulaski Bridge
★★★★★ Average: 5 (1 vote)
- Aggressive Drivers 05/04/2016 - 17:07
lots of aggressive drivers on Wythe south of the bridge
★★★★★ Average: 5 (1 vote)
- Vehicles Parking in Bike Lane 05/04/2016 - 17:05
trucks frequently parking in the bike lane on this stretch
★★★★★ Average: 5 (2 votes)
- Bike Lane Requested 05/04/2016 - 17:03
need to continue Berry St / Nassau Ave bike lane into Greenpoint
★★★★★ Average: 5 (2 votes)
- Bike Lane Requested 05/04/2016 - 17:01
Bike lane needed on Manhattan Ave -- abruptly ends at Greenpoint Ave
★★★★★ Average: 5 (1 vote)

Comments/Questions



Thank You!

Contact: Nwilliamsburg@dot.nyc.gov