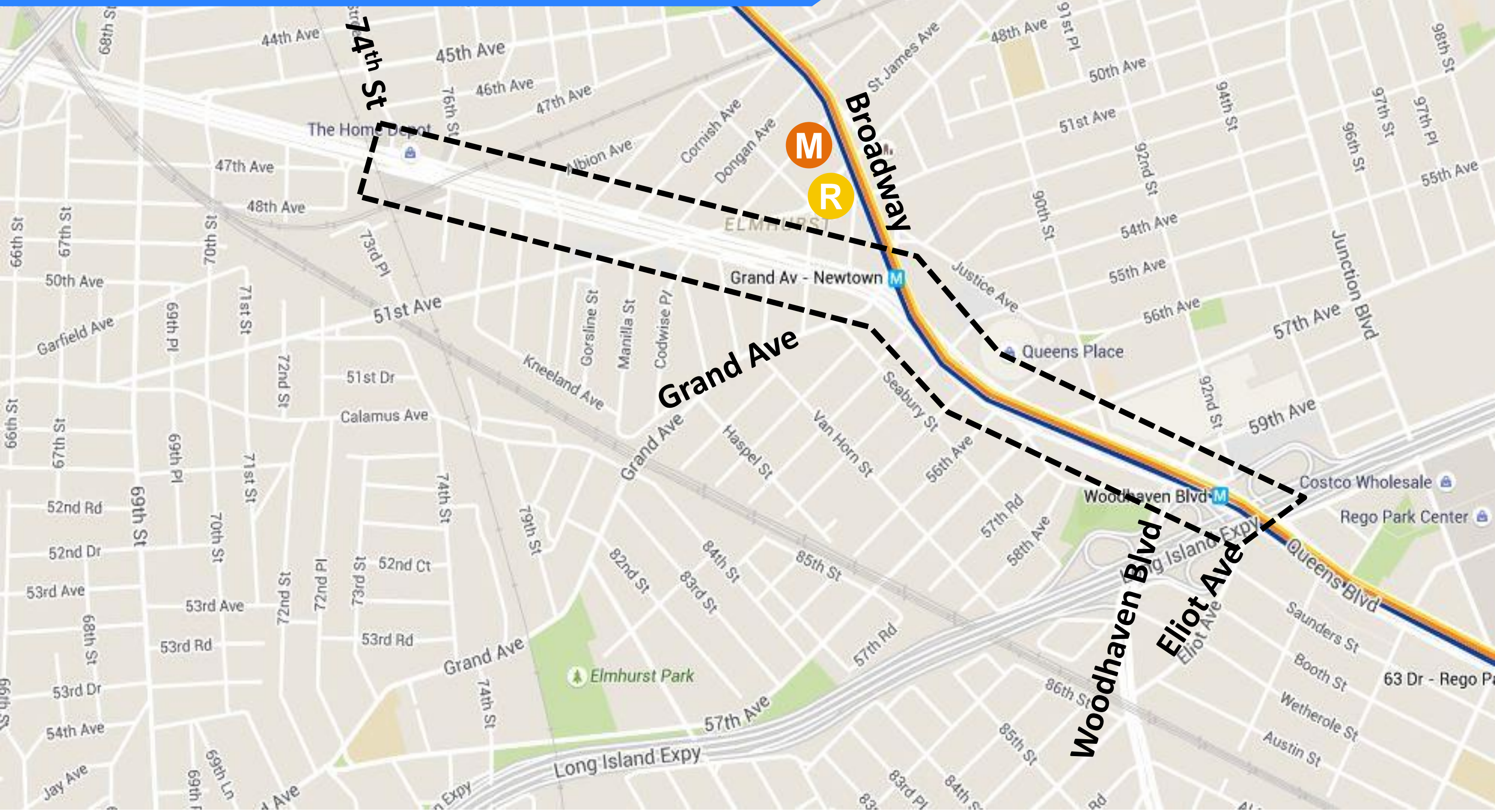
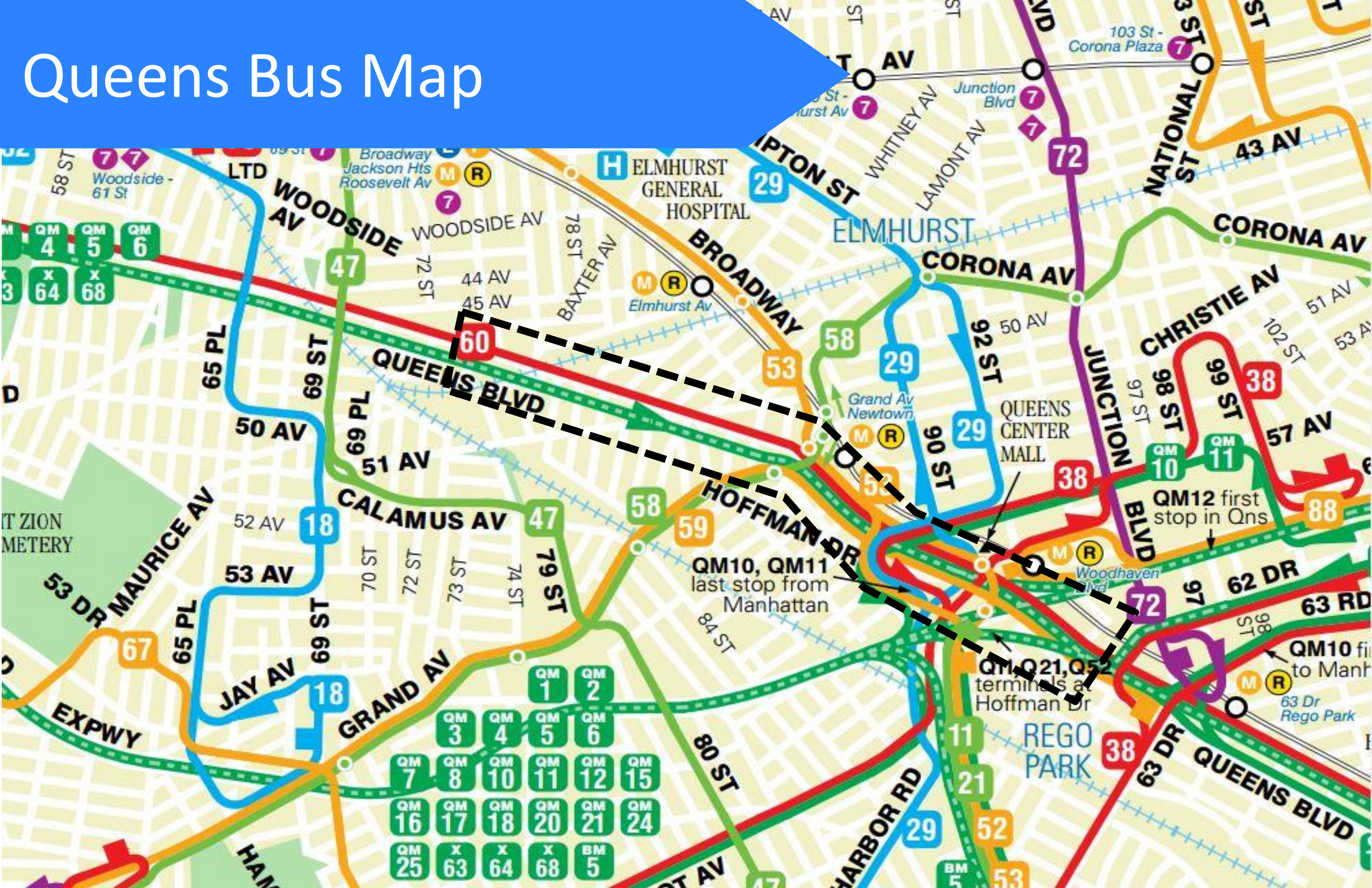


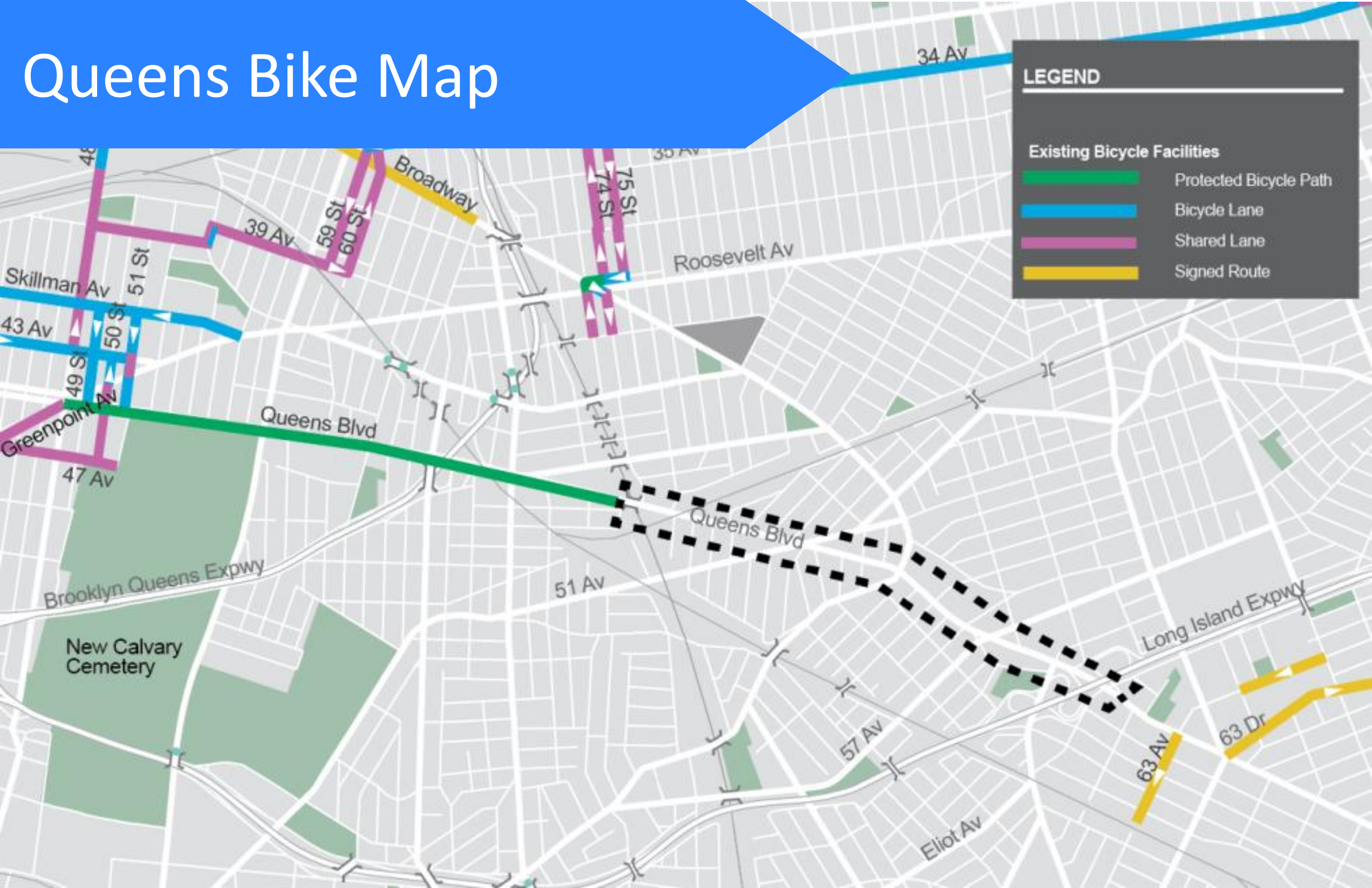
Queens Subway Map



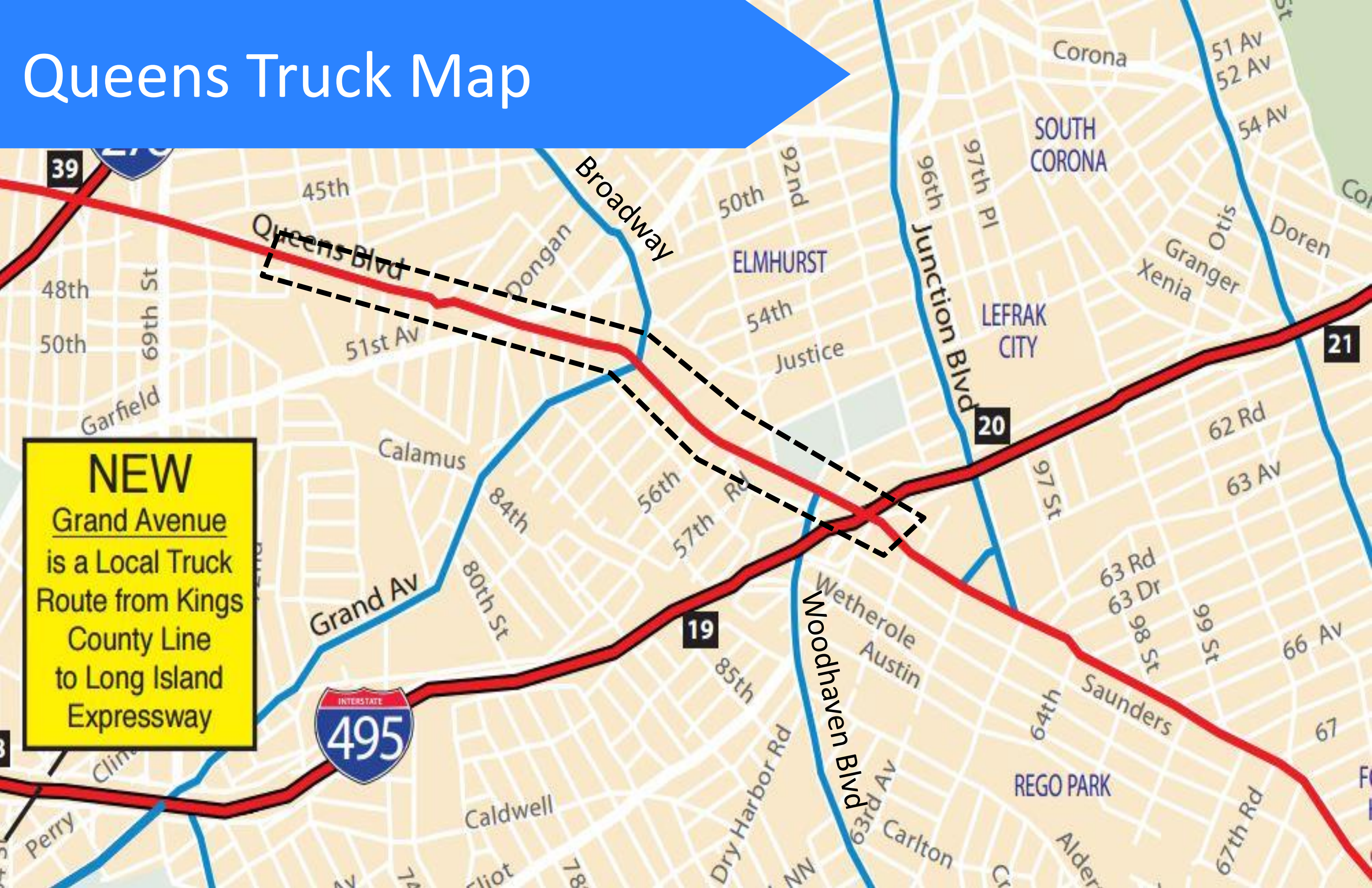
Queens Bus Map



Queens Bike Map



Queens Truck Map



NEW
Grand Avenue
is a Local Truck
Route from Kings
County Line
to Long Island
Expressway

Existing Conditions

Service roads



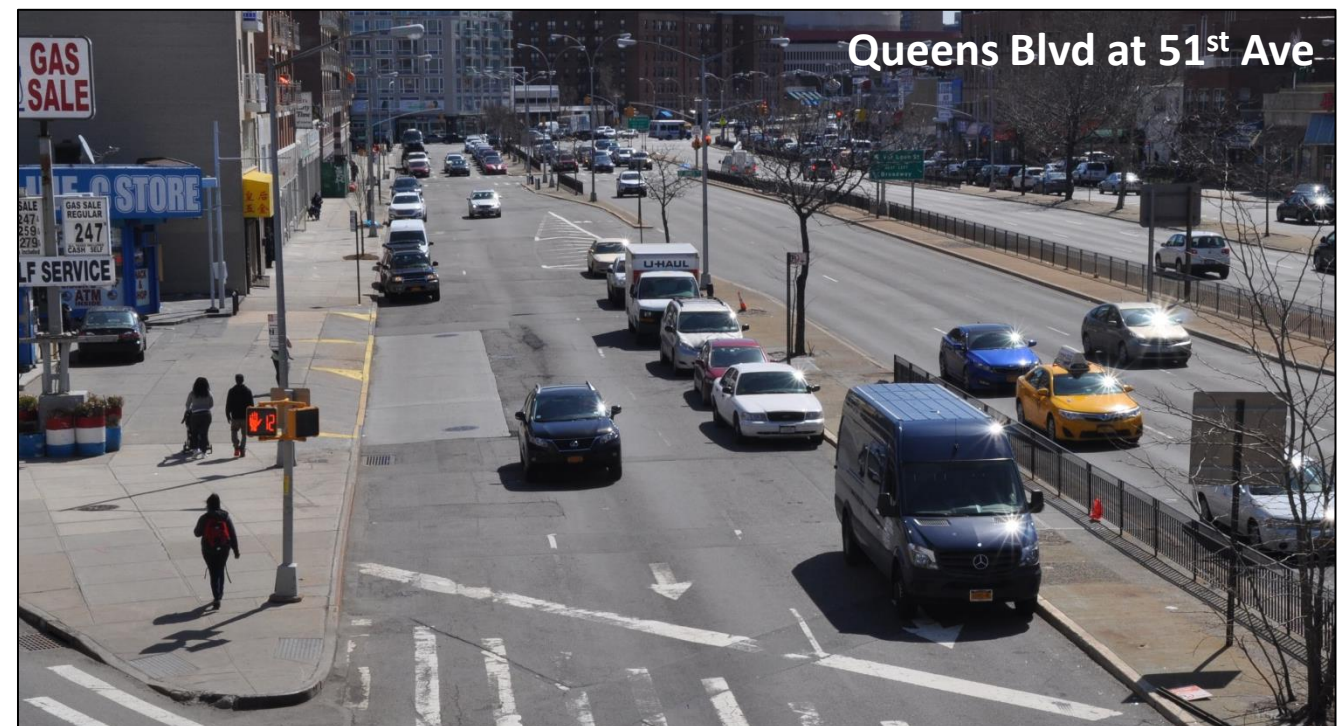
Slip lanes



Wide road / Long crossing distances



Parking varies between curbside and median



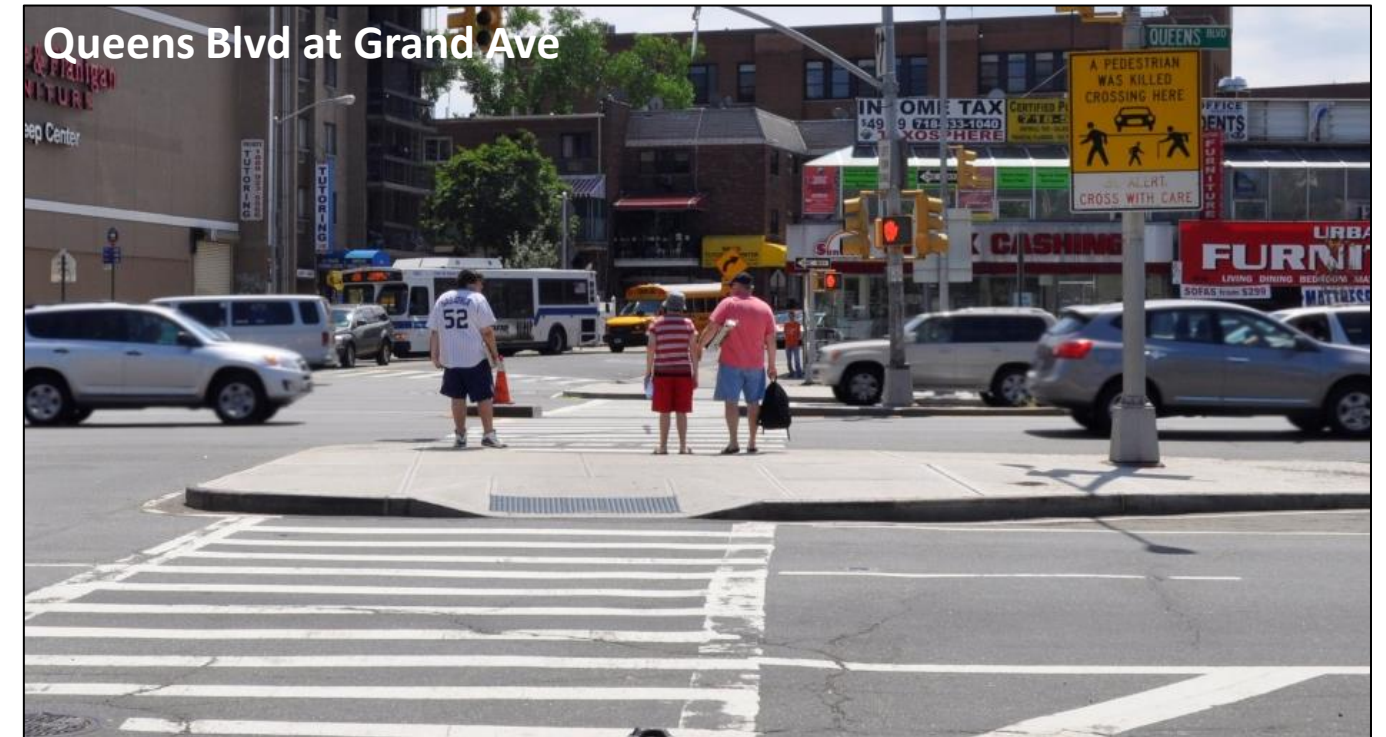
Behavior

Crossing outside of crosswalks / Midblock crossing



Queens Blvd at Albion Ave

Speeding



Queens Blvd at Grand Ave

Aggressive turning / failure to yield



Queens Blvd at Broadway

Unorganized service roads / weaving traffic



Queens Blvd at Woodhaven Blvd

Safety Data: Queens Boulevard

Total Injuries and Fatalities

Queens Blvd - 74 St to Eliot Ave, QN

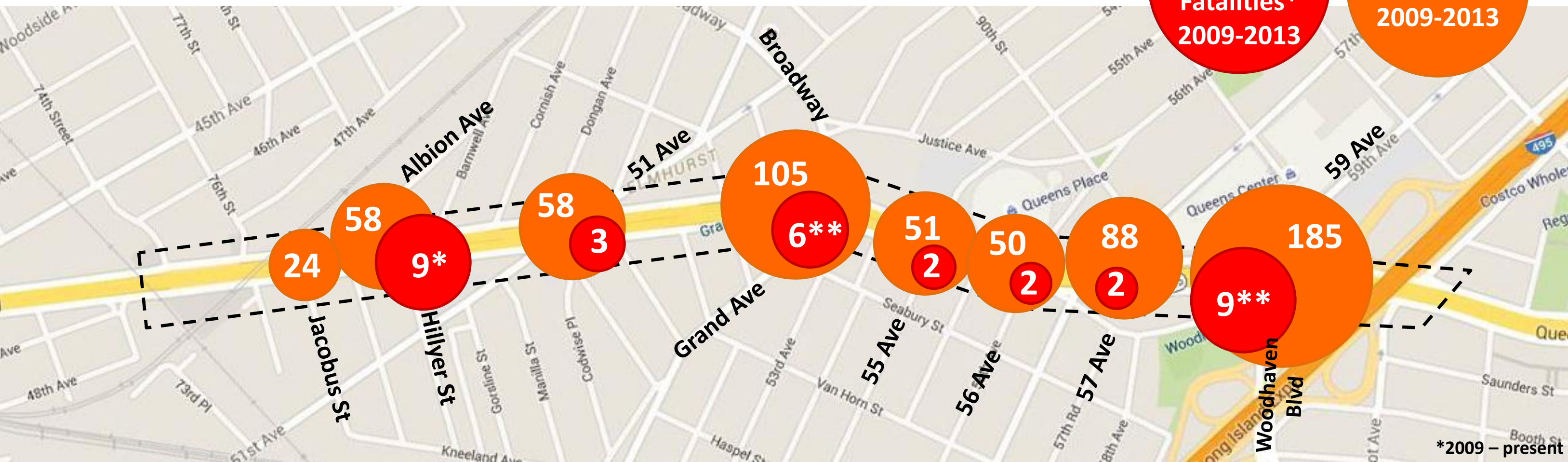
Injury Summary, 2009-2013 (5 Years)

	Total Injuries	Severe Injuries	Fatalities	KSI
Pedestrian	127	14	3	17
Bicyclist	20	2	0	2
Motor Vehicle Occupant	640	20	1	21
Total	787	36	4	40

Fatalities, 01/01/2009-5/11/2015 : 5

Source: Fatalities: NYCDOT
Injuries: NYSDOT
KSI: Persons Killed or Severely Injured

- ❑ Ranks in the top 10 percent of Queens streets for severe injuries and fatalities per mile (2009-2013 crash data)
- ❑ 40 persons killed or severely injured along 1.2 mile corridor since 2009; 43% (17) of which were pedestrians
- ❑ Majority of pedestrians (57%) hit at intersections, while crossing with the signal
- ❑ Majority of cyclists (64%) hit at intersections
- ❑ Vehicle occupant injuries associated with:
 - Rear end crashes (36%)
 - Right angle crashes (18%)
 - Sideswipe crashes (13%)

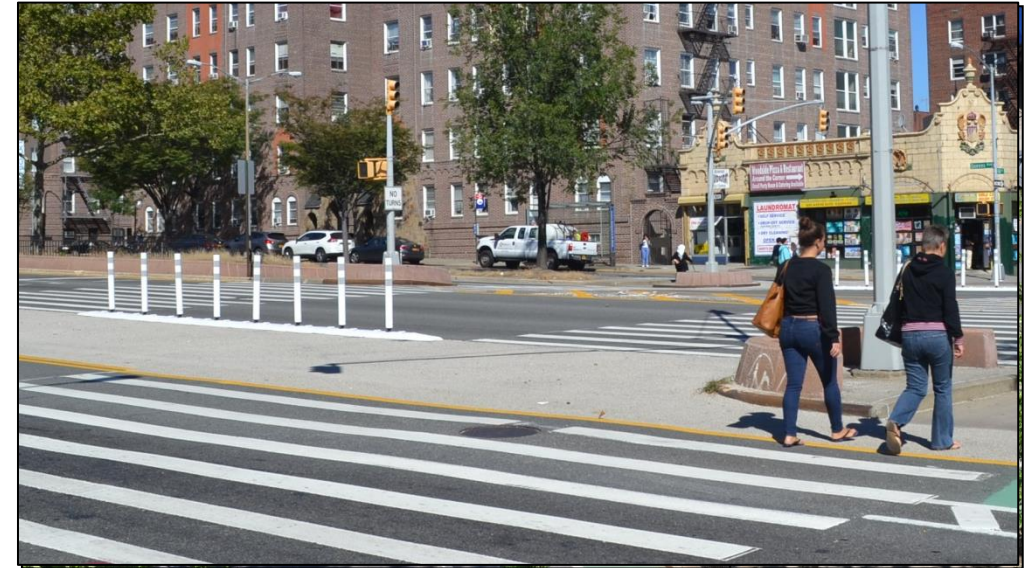


Markings Toolkit

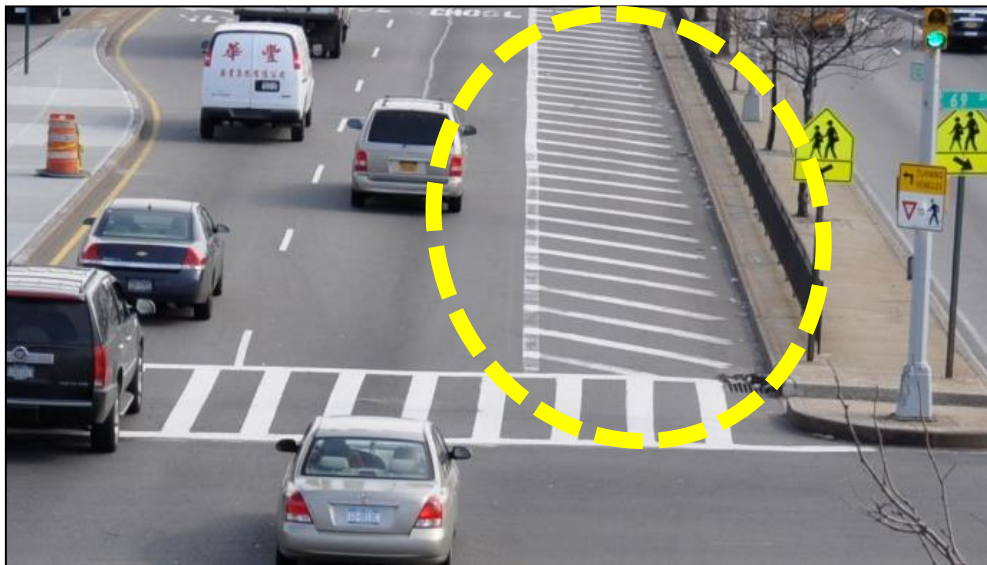
Wide, high-visibility crosswalks



Painted pedestrian space



Channelization/stripping



Daylighting/add visibility at corners



Parking lane stripe



“Sharrows” (Shared bike lane)



Standard bike lane

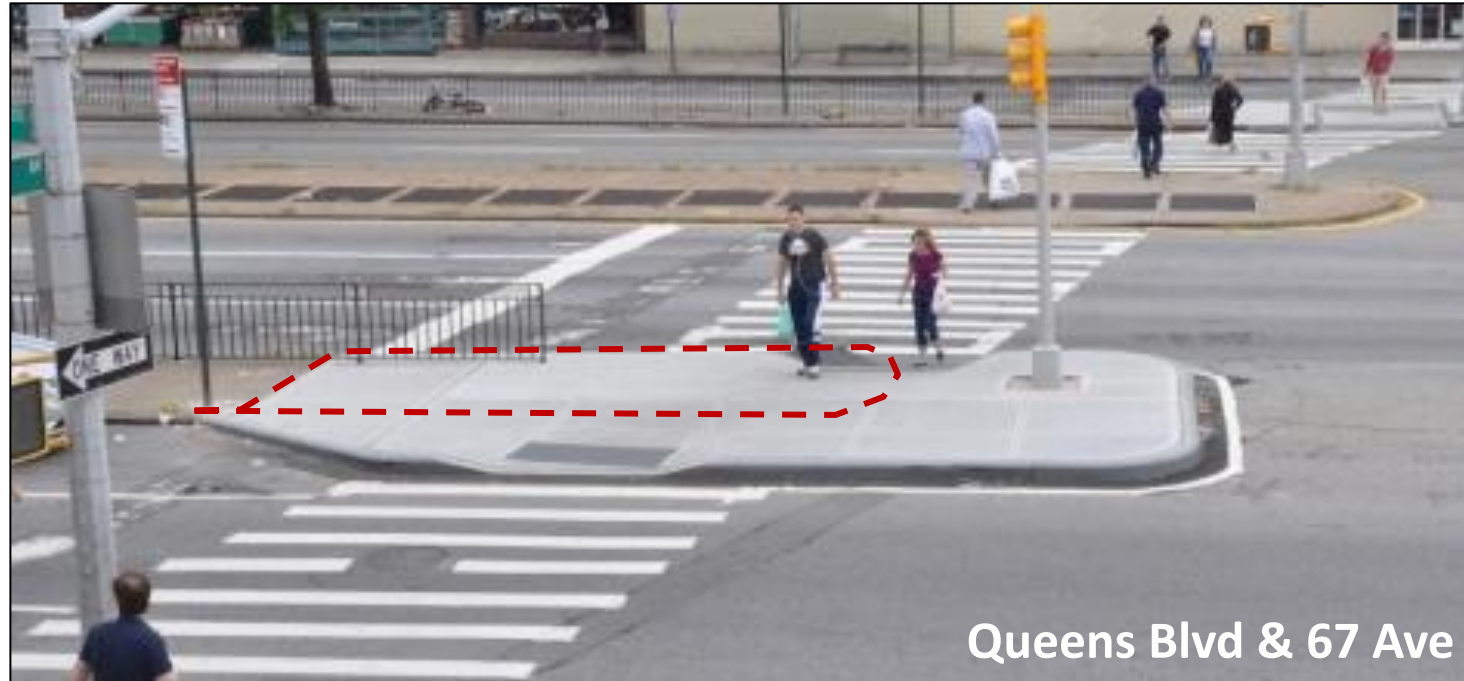


Buffered bike lane



Concrete Toolkit

Median tip extension/widening



New slip lane between mainline and service road



Expanded center median* (in turn bay, with turn ban)



Curb/sidewalk extension



*Can include tree pits

Traffic Control Toolkit

Street reversals/
one-way conversions



New signal construction



Signal timing changes



Stop controls and
parking regulations



Turn bans



Plastic bollards



Beautification Toolkit

(Require maintenance partner)

Public space



Wayfinding signs



Public art



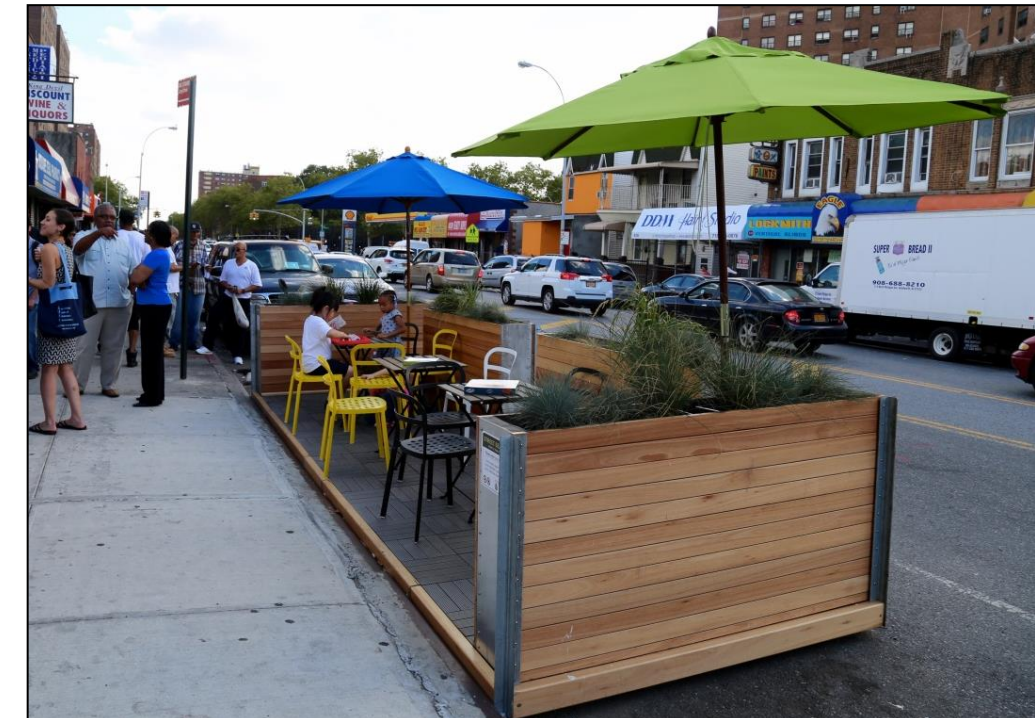
CityBench



Bike corral with planters



Street seats



Queens Boulevard 2015 Safety Project

Pedestrian path, bike lane, and slip closure



Mall-to-mall crossings



New traffic signals / midblock crossing



Stop controlled slip lane



Slip lane with new traffic signal



Painted sidewalk extensions



Map Exercise & Feedback

Date:

Table:

Use the large map to identify locations where DOT should focus improvement efforts. Use the toolkits to guide your suggestions. Please be as specific as possible. As a group, select your top points to share with the workshop. Please be as specific as possible.



Queens Blvd Operational Project 1
January 2015 community workshop

Top Points to Share

