

Building the Brooklyn Waterfront Greenway



What Is the Greenway?

→ The Brooklyn Waterfront Greenway is a planned 14-mile pedestrian and bicycle route connecting communities along Brooklyn's waterfront. Separate paths for bicycles and pedestrians will allow cyclists and walkers to commute, exercise, explore, and relax from Newtown Creek in north Brooklyn to the



beginning of the Shore Parkway Greenway in Bay Ridge, creating a full 27-mile greenway along Brooklyn's waterfront.

The Brooklyn Waterfront Greenway is a trunk segment in New York City's expanding network of greenways – linking via three East River bridges to Manhattan, and to the Queens East

River Greenway, the Shore Parkway Greenway and Jamaica Bay Greenway. Over the past decade, New York City has truly opened public access to the waterfront with over 60 miles of public space planned or under construction. There are over 500 miles of greenways proposed throughout the five boroughs. The completion of the Brooklyn Waterfront Greenway is a crucial part of these visions.

Five miles of the Brooklyn Waterfront Greenway are already in place and include some of the most popular bicycle and pedestrian routes in the City. Two additional miles along West Street and around the Navy Yard are now being designed. Altogether, this unique set of pathways, green spaces, and public programs are transforming Brooklyn's waterfront.

Why Build the Greenway?

Increase Mobility

Create efficient new commuting options that connect waterfront neighborhoods to the rest of the city.

Improve Public Health

Provide all New Yorkers with easily accessible active recreational opportunities and green spaces.

Green Streets & Sidewalks

Create more inviting streetscapes with new trees and vegetation to improve quality of life and clean the air.

Improve Water Quality

Create absorbent landscapes that treat stormwater and reduce releases of raw sewage through the combined sewer system.



How Will It Happen?

→ The Greenway is happening thanks to a unique partnership of public agencies and private organizations, including the New York City Department of Transportation (NYC DOT), Brooklyn Greenway Initiative (BGI), Regional Plan Association (RPA), and Congresswoman Nydia Velázquez.

Since 2004, BGI has been the catalyst for the greenway's planning, construction, and stewardship. Working with RPA, BGI has engaged community, business, and governmental partners to create a vision for a comprehensive network including concept plans, design guidelines, stewardship options, and stormwater management approaches. At the same time, UPROSE facilitated a community driven design process for a Sunset Park Greenway-Blueway. This focused on streetscape improvements connecting Sunset

Park to its waterfront.

In 2008, NYC DOT began work on the Implementation Plan that will guide future development of the Greenway and ensure its completion. This detailed plan, summarized here and available at nyc.gov/dot, provides information on the 23 capital projects along the Greenway. These NYC capital projects – and other improvements and activities that engage neighboring communities, create new green spaces, and connect pedestrians and bicyclists to the waterfront – will be implemented over time and as funds become available. More than \$20 million in federal funding has been secured for the greenway. Over \$14 million was sponsored by Congresswoman Nydia Velázquez's office. NYC DOT has made the Greenway a priority project, allocating additional money for both short

and long term improvements.

In addition to sections on the NYC DOT right-of-way, the Greenway route and associated open spaces will rely on the cooperation of public and private landowners including the Brooklyn Navy Yard Development Corporation, Port Authority of New York & New Jersey, New York City Parks and Recreation, New York City Economic Development Corporation, Brooklyn Bridge Park Development Corp, and IKEA Brooklyn. Stewardship will be shared by these landowners and BGI.

Get involved by becoming a BGI member or volunteer! Show your support for a completed Brooklyn Waterfront Greenway and work to make sure this extraordinary public space gets built.

→ brooklyngreenway.org for more information

What Will the Greenway Look Like?

[Separated Path]

Bike and pedestrian paths separated by a planted buffer, also buffered from the street.

[Raised Lanes]

Raised bike lane with mountable curb separated from pedestrian paths by a planted buffer.

[On-Street Lane]

On-street painted bike lane.

[Shared Path]

Shared bike and pedestrian path separated from roadway with a planted buffer.

[Barrier Protected Path]

Bike and pedestrian paths separated by a planted buffer with jersey barriers separating bike lanes and roadway.

Community Involvement



Jersey Barrier Painting



Epic Ride



Stormwater Management



Youth Education



Neighborhood Clean-Up Projects



Community Workshops



Waterfront Festivals

Green Spaces



Bike & Pedestrian Connections



Pulaski Bridge



Greenpoint Ave.



South 4th/5th Williamsburg



Flushing Ave.



Vanderbilt



Manhattan Bridge



Brooklyn Bridge



Washington



Congress/Kane



Columbia



Clinton/Smith



3rd Ave.



42nd/43rd



50th/51st



Wakeman

23 Capital Projects

McGuinness Blvd

1

Eagle St

2

Quay St

3

N 14th St

4

Clymer St

5

Williamsburg St

6

Flushing Ave

7

Navy St

8

Plymouth Ave

9

Bklyn Bridge Park

10

Atlantic Ave

11

Van Brunt St

12

Bowne St

13

Pioneer St

14

Erie Basin Park

15

Columbia St

16

Halleck St

17

Court St

18

Hamilton Ave

19

29th St

20

Bush Term. Piers Park

21

51st St

22

58th St

23

Owl's Head Park

Greenpoint & Williamsburg

Navy Yard & Downtown

Red Hook

Sunset Park

Building the Greenway

NYC DOT has identified 23 distinct capital projects along the Greenway. These projects will be implemented over time and as funding is made available and street reconstructions are scheduled. As DOT works to design, fund and construct the greenway route, Brooklyn Greenway Initiative and Regional Plan Association are working to create and improve new green spaces along the route and maximize the “green” in the Greenway.

Stewardship & Maintenance

DOT and BGI are also looking ahead at maintenance needs for the Greenway. Some local businesses and property owners are stepping up to help BGI's volunteers and they will have a continuing role to play as new professional services are added. To help as a volunteer go to brooklyngreenway.org.

Visit the Greenway

The entire Greenway is marked now as a New York City bicycle route. Already 2,500 people per day use Flushing Avenue at the Brooklyn Navy Yard – one of the most popular bicycle routes in the City. Other recreation areas are also being built in Brooklyn Bridge Park and Erie Basin Park. As the segments currently in design are built, the Greenway will become useful to more people. Keep up to date at brooklyngreenway.org.

Become a BGI Member

Become a member of Brooklyn Greenway Initiative and you will stay connected with the Greenway's progress and learn how you can lend your voice to insure its completion, while having fun and meeting new people. Go to brooklyngreenway.org.

Contact Your Elected Representatives

Elected officials will need to support the Brooklyn Waterfront Greenway by appropriating capital funding. The project has already benefited from the actions of Congresswoman Nydia Velázquez and other leaders. Continued progress requires that you and your neighbors show your support for this project. Go to brooklyngreenway.org to find out how you can help get the Greenway built!

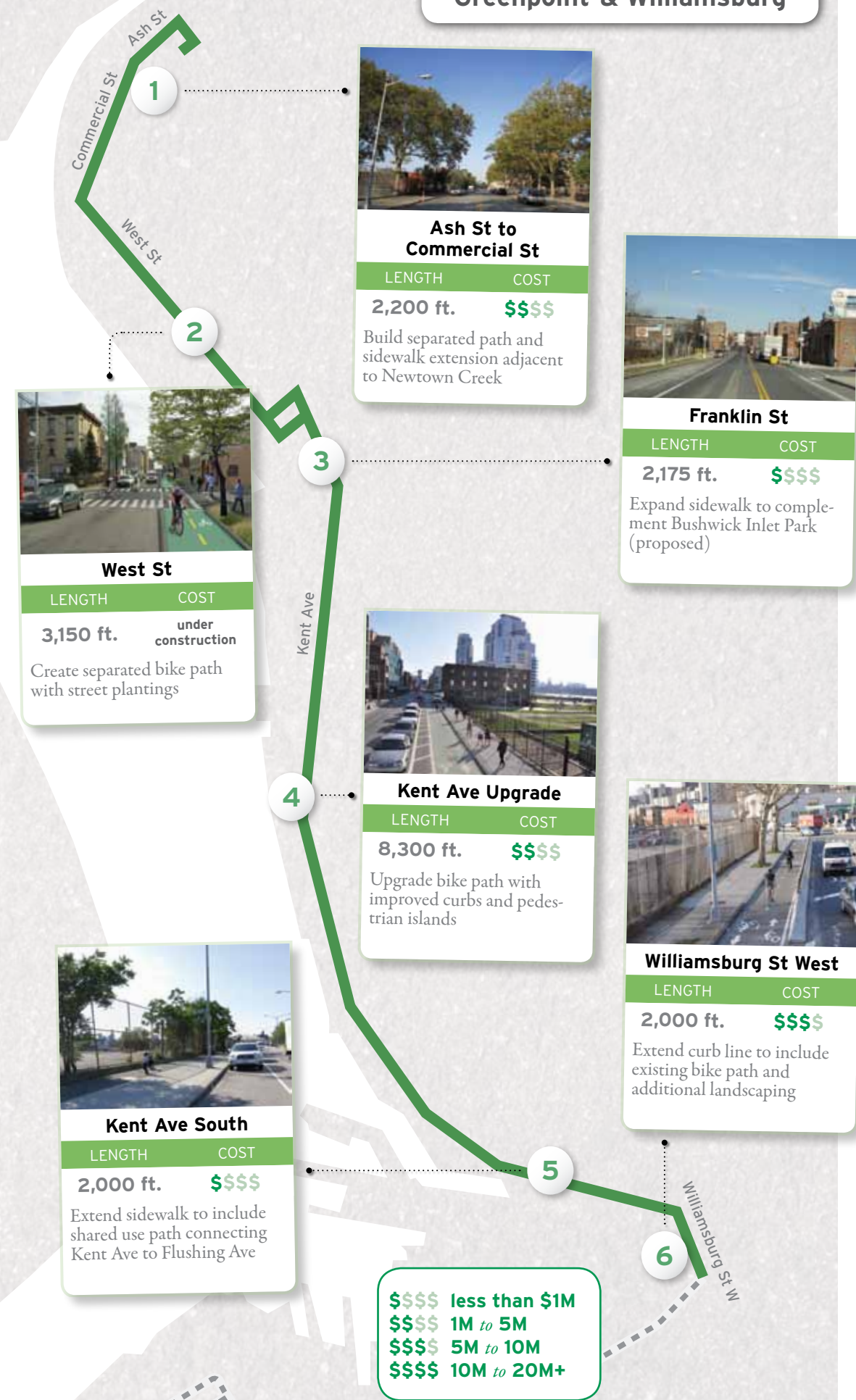
Contact Us

New York City Department of Transportation
153 Columbia Street
Brooklyn, NY 11231
www.brooklyngreenway.org
brooklynwaterfrontgreenway@dot.nyc.gov

Brooklyn Greenway Initiative
153 Columbia Street
Brooklyn, NY 11231
www.brooklyngreenway.org
718.522.0193

Funding for the production of this document is made possible by the NYS Department of State with funds provided under Title 11 of the Environmental Protection Fund sponsored by the Office of the Brooklyn Borough President. Printing courtesy of the New York City Department of Transportation. Designed and produced by Regional Plan Association.

Greenpoint & Williamsburg



Navy Yard & Downtown



Red Hook



Sunset Park